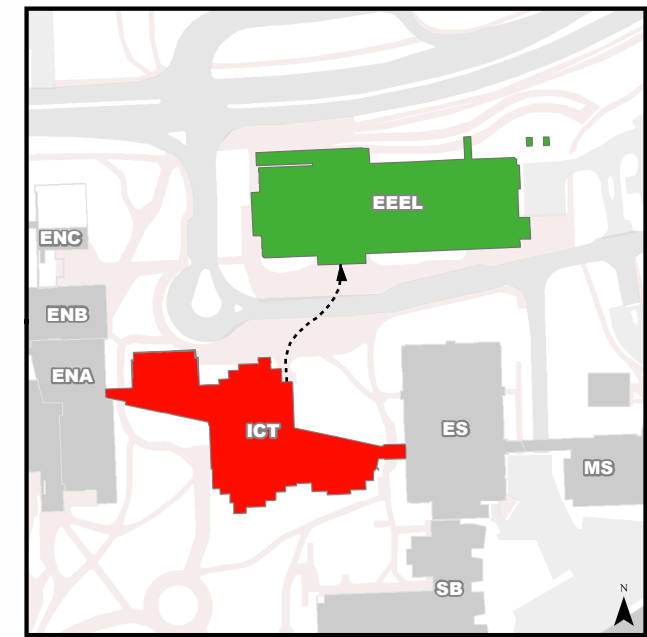


Emergency Evacuation Procedures

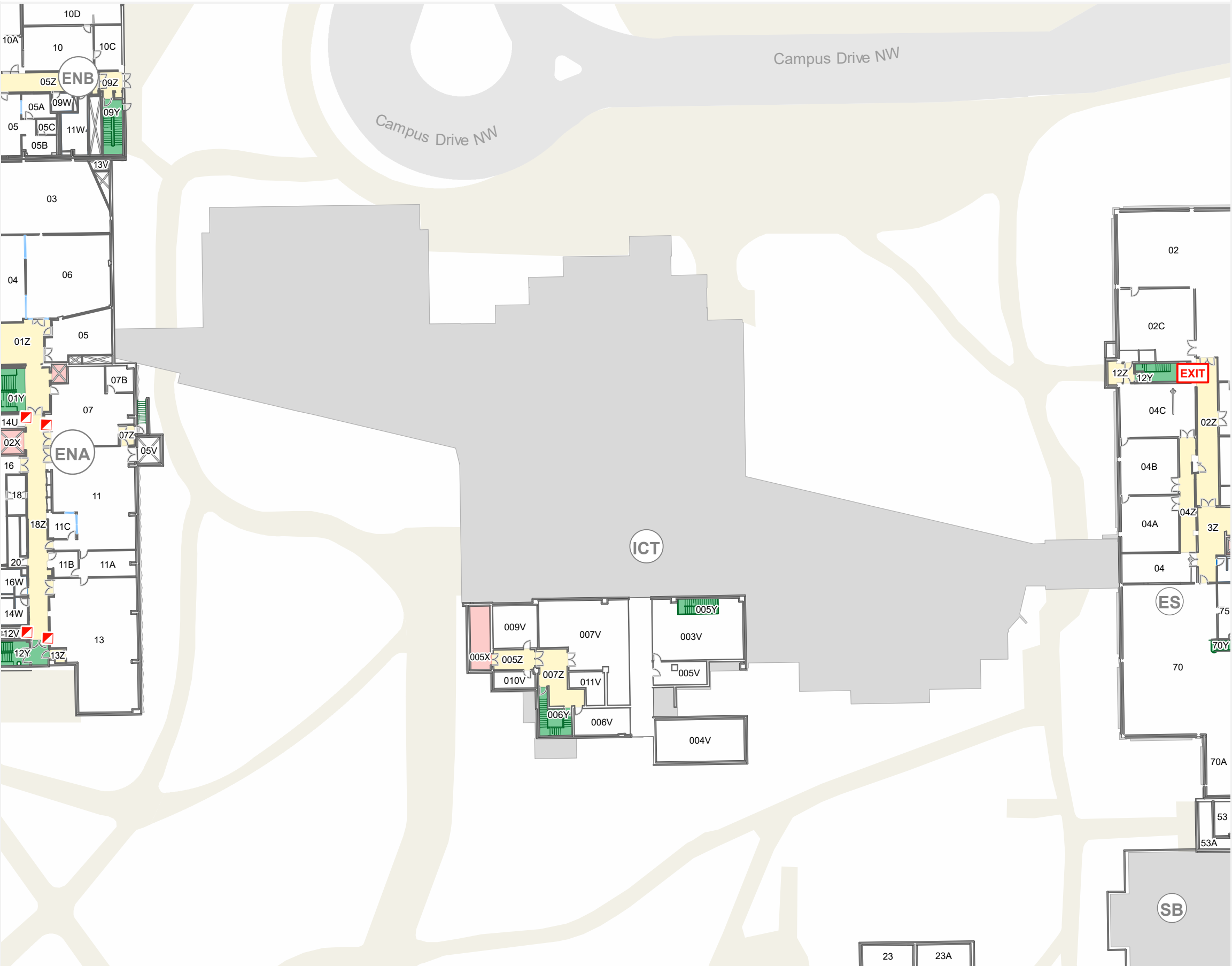
- A. Activate the **NEAREST FIRE ALARM PULL STATION**, located along exit path.
- B. Take coat and keys if immediately available.
- C. Evacuate building through the nearest exit. Use stairs - **DO NOT USE ELEVATORS**.
- D. Close all doors along your exit route.
- E. If directed by wardens, follow their instructions.
- F. Move away from the building and proceed to the Assembly Point.

If you have information regarding the emergency call **Campus Security** at **403-220-5333** from a safe location.

Evacuation Assembly Point Energy, Environment & Experiential Learning (EEEL)



- Building You Are In
- Assembly Point (EEEL)

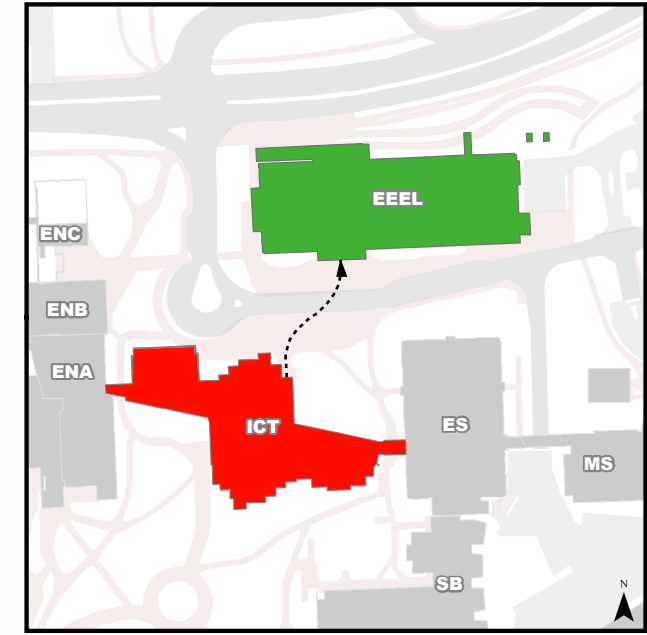


Emergency Evacuation Procedures

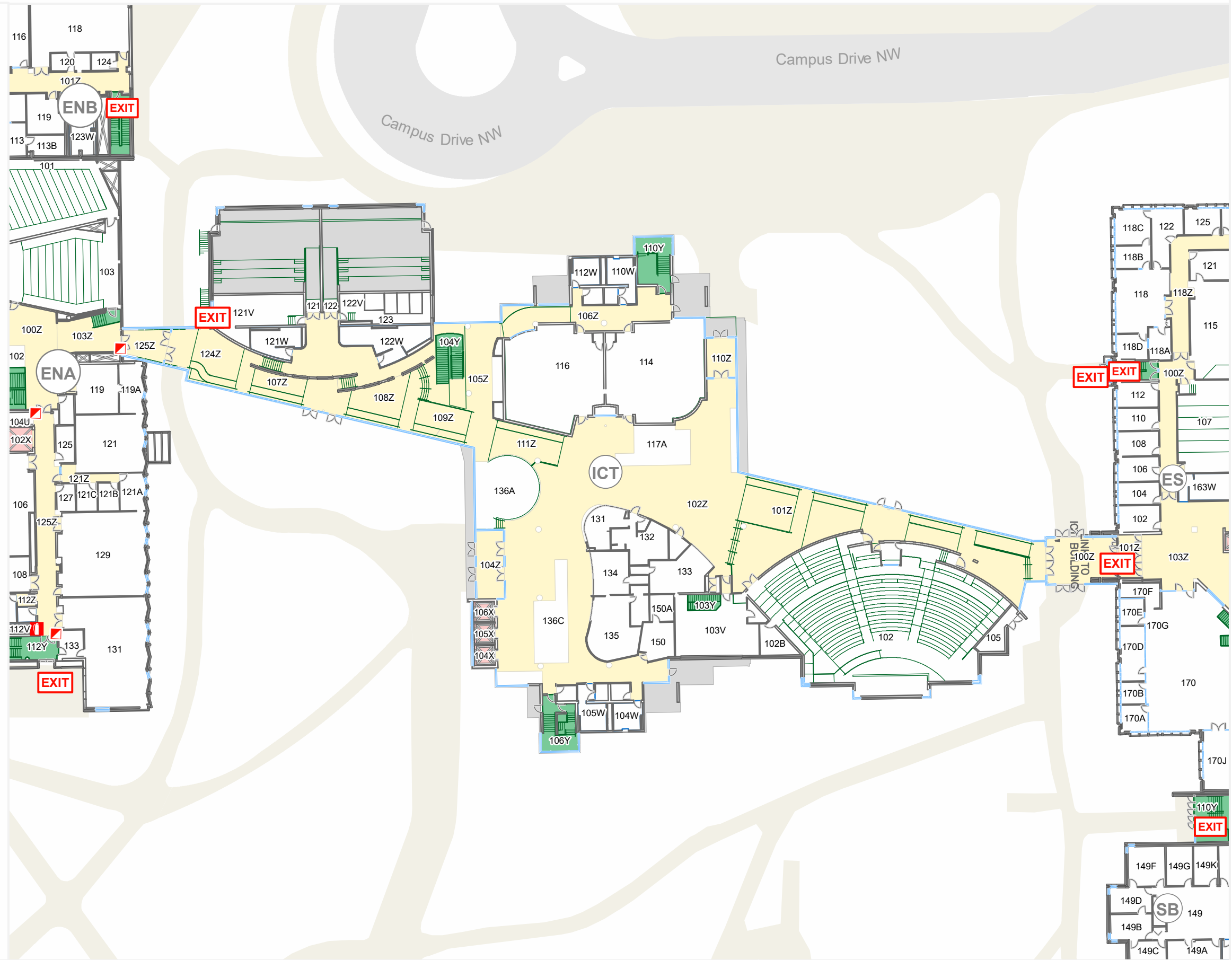
- A. Activate the **NEAREST FIRE ALARM PULL STATION**, located along exit path.
- B. Take coat and keys if immediately available.
- C. Evacuate building through the nearest exit. Use stairs - **DO NOT USE ELEVATORS**.
- D. Close all doors along your exit route.
- E. If directed by wardens, follow their instructions.
- F. Move away from the building and proceed to the Assembly Point.

If you have information regarding the emergency call **Campus Security** at **403-220-5333** from a safe location.

Evacuation Assembly Point Energy, Environment & Experiential Learning (EEEL)



- Building You Are In
- Assembly Point (EEEL)

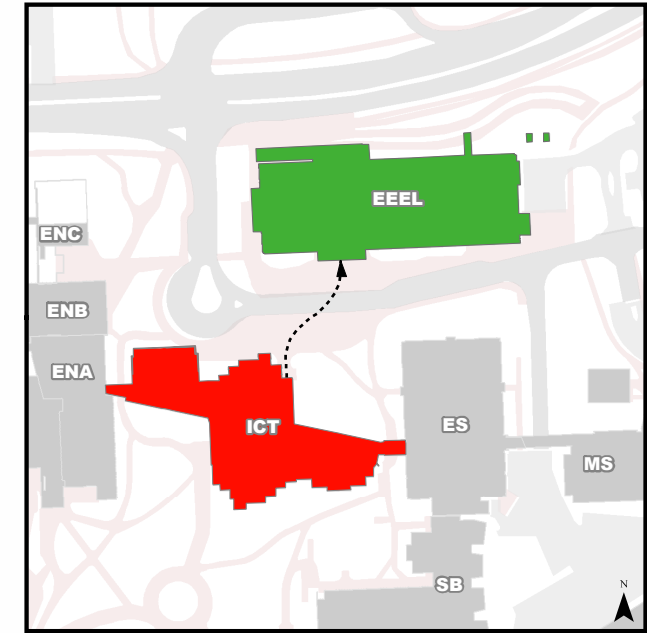


Emergency Evacuation Procedures

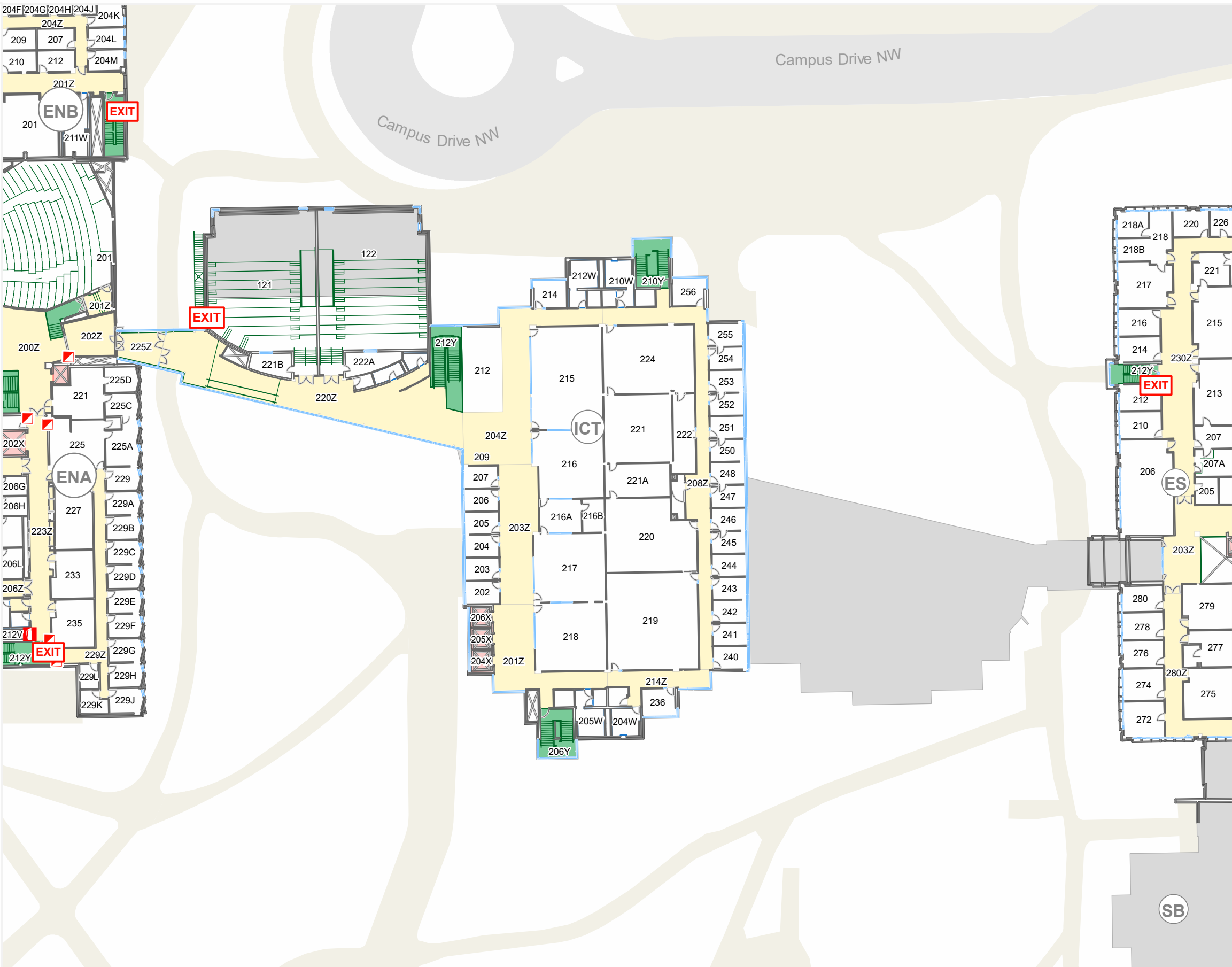
- A. Activate the **NEAREST FIRE ALARM PULL STATION**, located along exit path.
- B. Take coat and keys if immediately available.
- C. Evacuate building through the nearest exit. Use stairs - **DO NOT USE ELEVATORS**.
- D. Close all doors along your exit route.
- E. If directed by wardens, follow their instructions.
- F. Move away from the building and proceed to the Assembly Point.

If you have information regarding the emergency call **Campus Security** at **403-220-5333** from a safe location.

Evacuation Assembly Point Energy, Environment & Experiential Learning (EEEL)



- Building You Are In
- Assembly Point (EEEL)

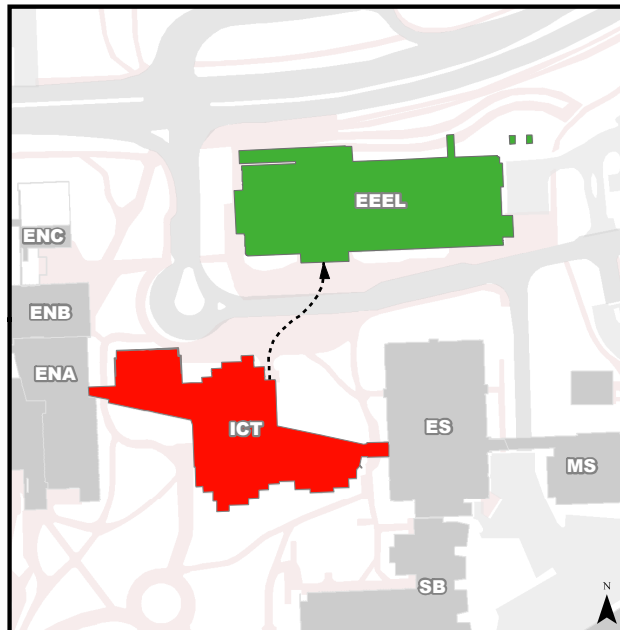


Emergency Evacuation Procedures

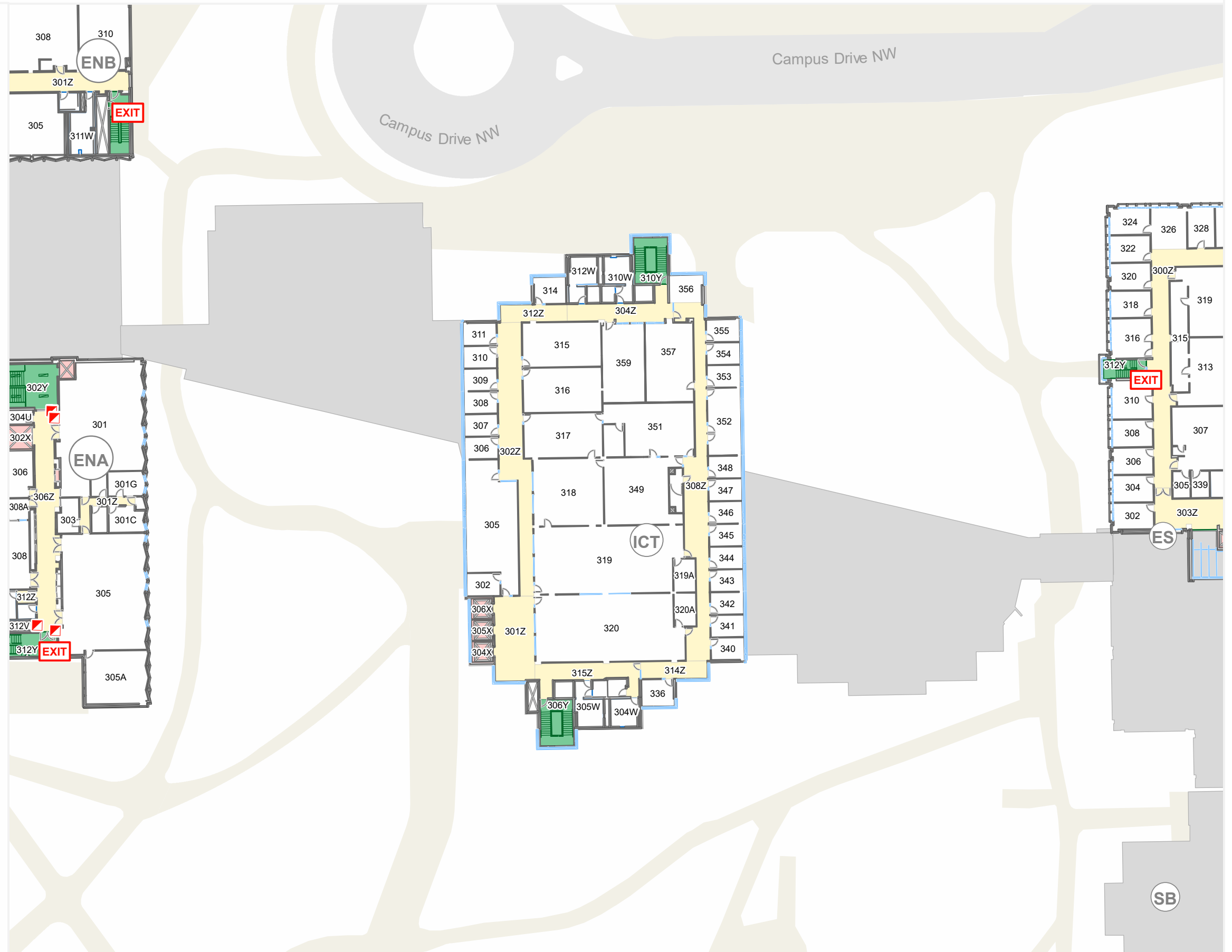
- Activate the **NEAREST FIRE ALARM PULL STATION**, located along exit path.
- Take coat and keys if immediately available.
- Evacuate building through the nearest exit. Use stairs - **DO NOT USE ELEVATORS**.
- Close all doors along your exit route.
- If directed by wardens, follow their instructions.
- Move away from the building and proceed to the Assembly Point.

If you have information regarding the emergency call **Campus Security** at **403-220-5333** from a safe location.

Evacuation Assembly Point Energy, Environment & Experiential Learning (EEEL)



- Building You Are In
- Assembly Point (EEEL)

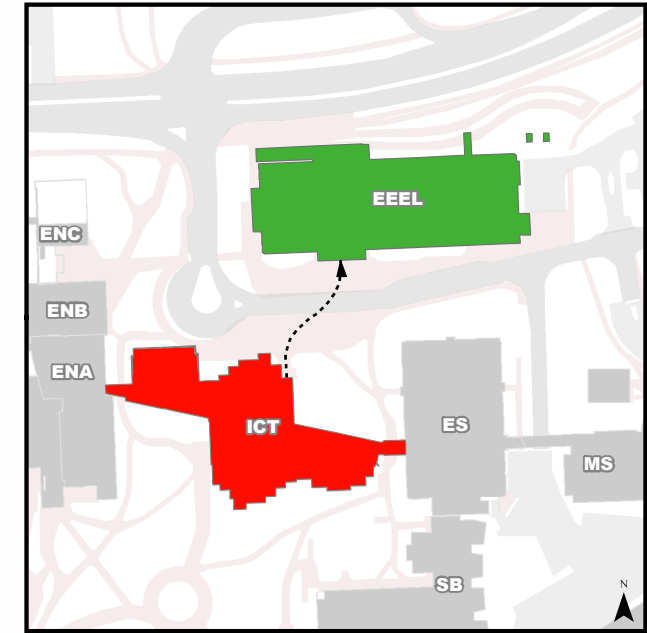


Emergency Evacuation Procedures

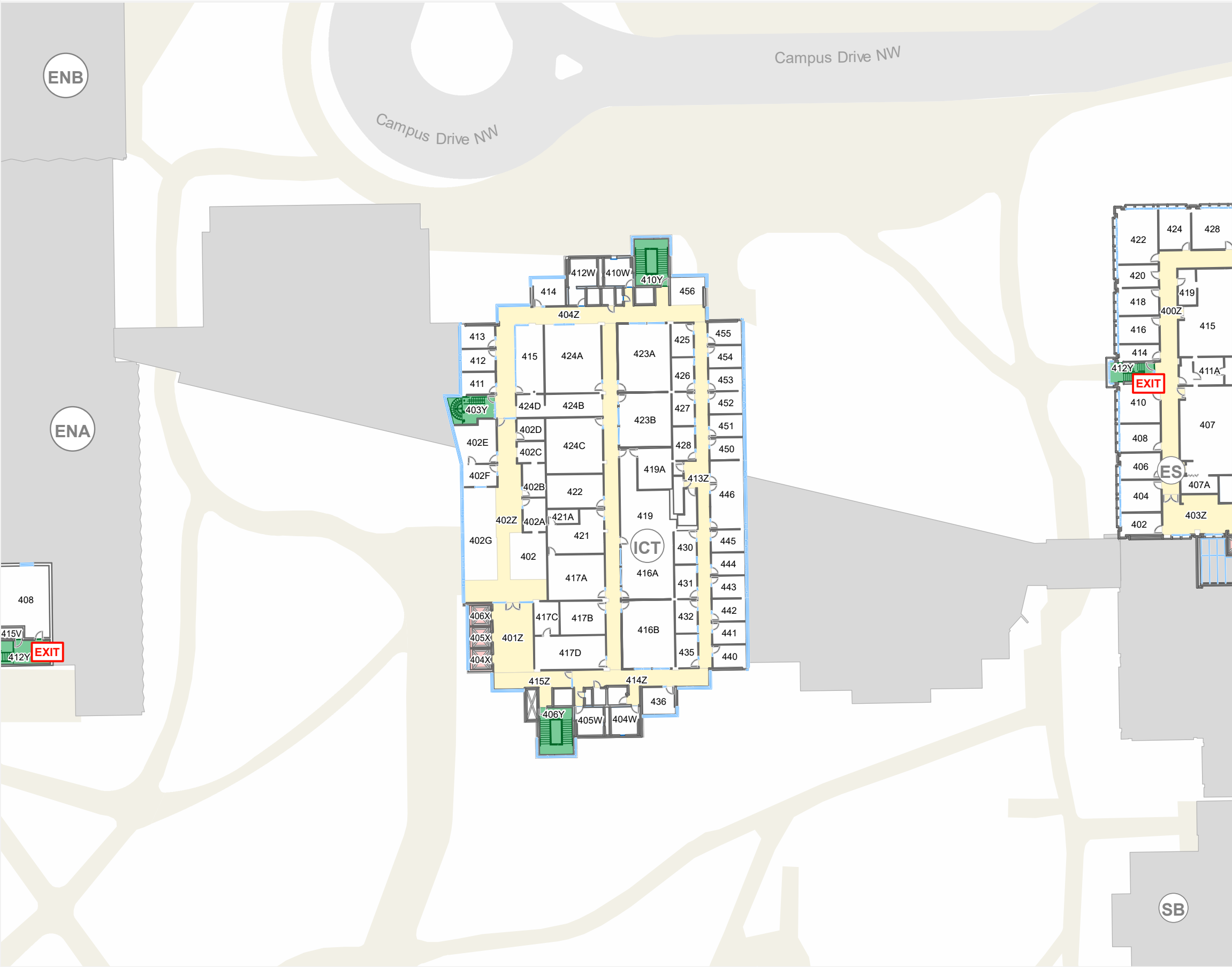
- A. Activate the **NEAREST FIRE ALARM PULL STATION**, located along exit path.
- B. Take coat and keys if immediately available.
- C. Evacuate building through the nearest exit. Use stairs - **DO NOT USE ELEVATORS**.
- D. Close all doors along your exit route.
- E. If directed by wardens, follow their instructions.
- F. Move away from the building and proceed to the Assembly Point.

If you have information regarding the emergency call **Campus Security** at **403-220-5333** from a safe location.

Evacuation Assembly Point Energy, Environment & Experiential Learning (EEEL)



- Building You Are In
- Assembly Point (EEEL)



Emergency Evacuation Procedures

A. Activate the **NEAREST FIRE ALARM PULL STATION**, located along exit path.

B. Take coat and keys if immediately available.

C. Evacuate building through the nearest exit. Use stairs - **DO NOT USE ELEVATORS.**

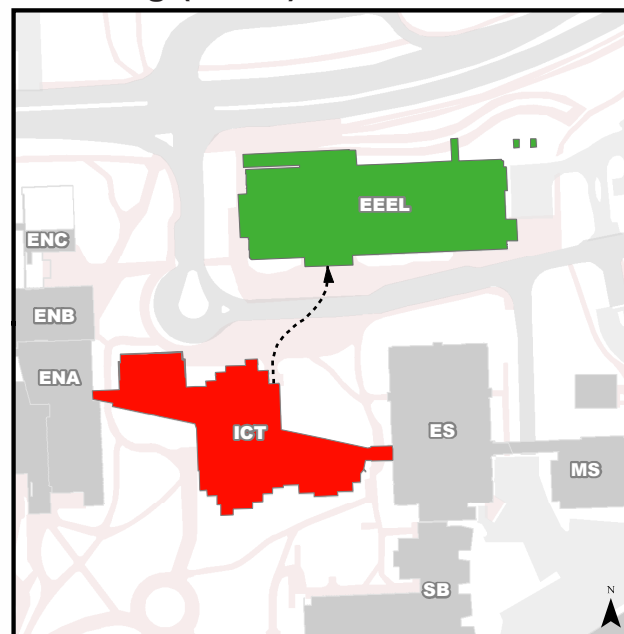
D. Close all doors along your exit route.


E. If directed by wardens, follow their instructions.

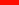
F. Move away from the building and proceed to the Assembly Point.

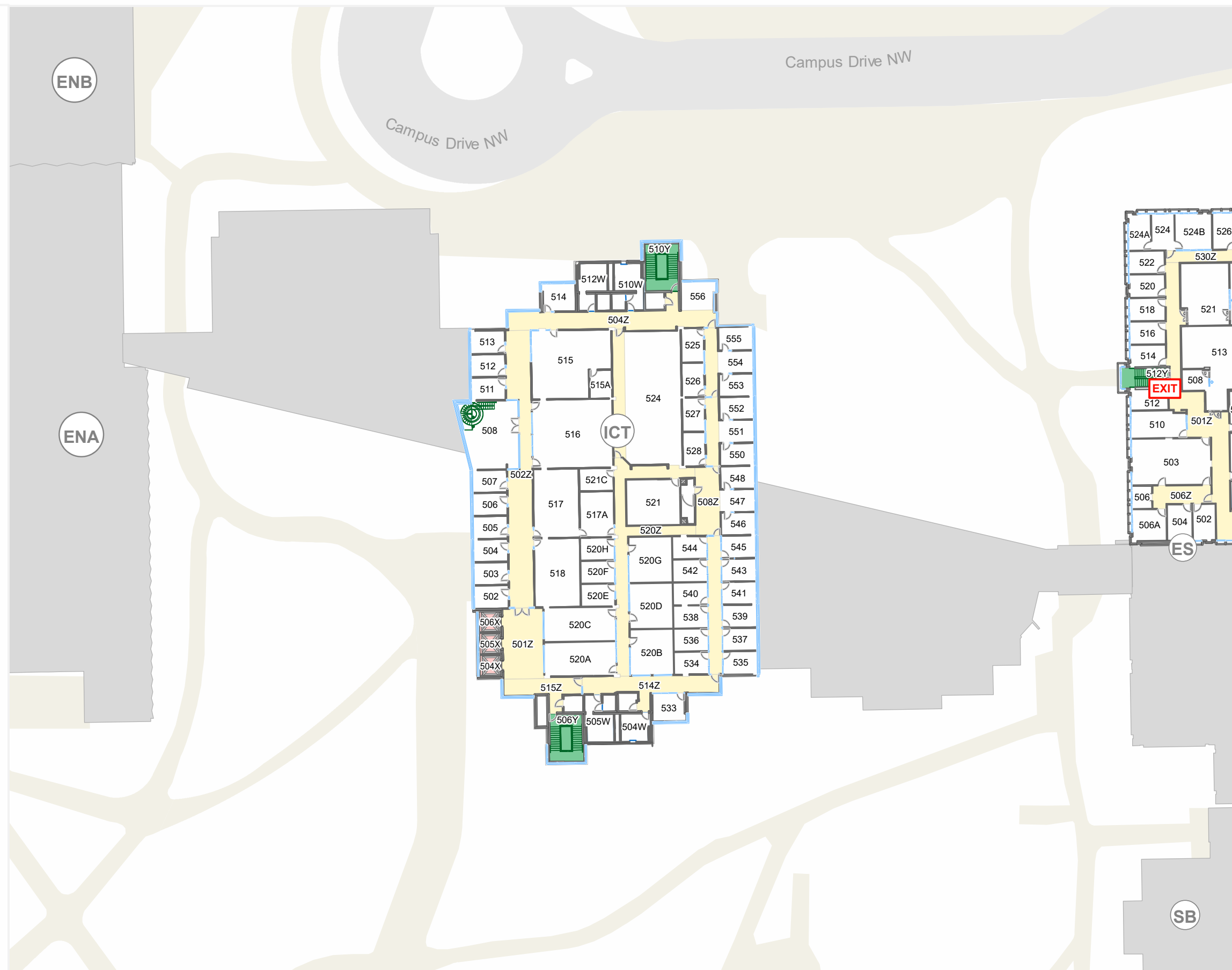
If you have information regarding the emergency call **Campus Security** at **403-220-5333** from a safe location.

Evacuation Assembly Point Energy, Environment & Experiential Learning (EEEL)



 Building You Are In

 Assembly Point (EEEL)

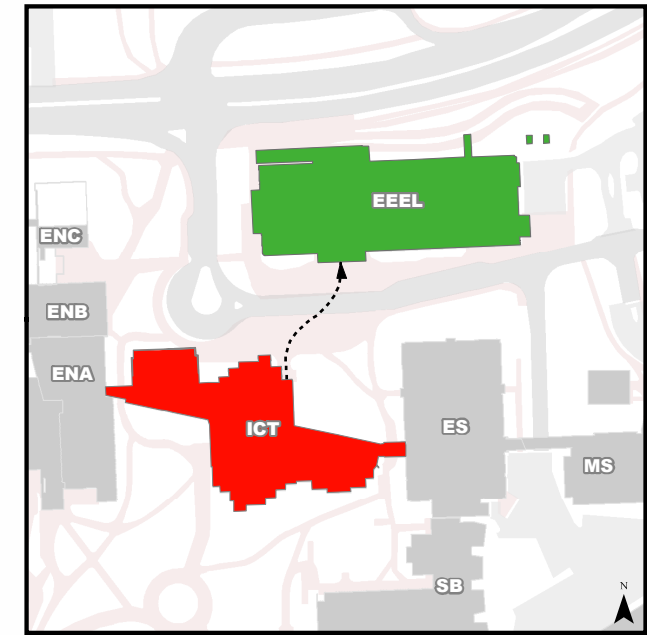


Emergency Evacuation Procedures

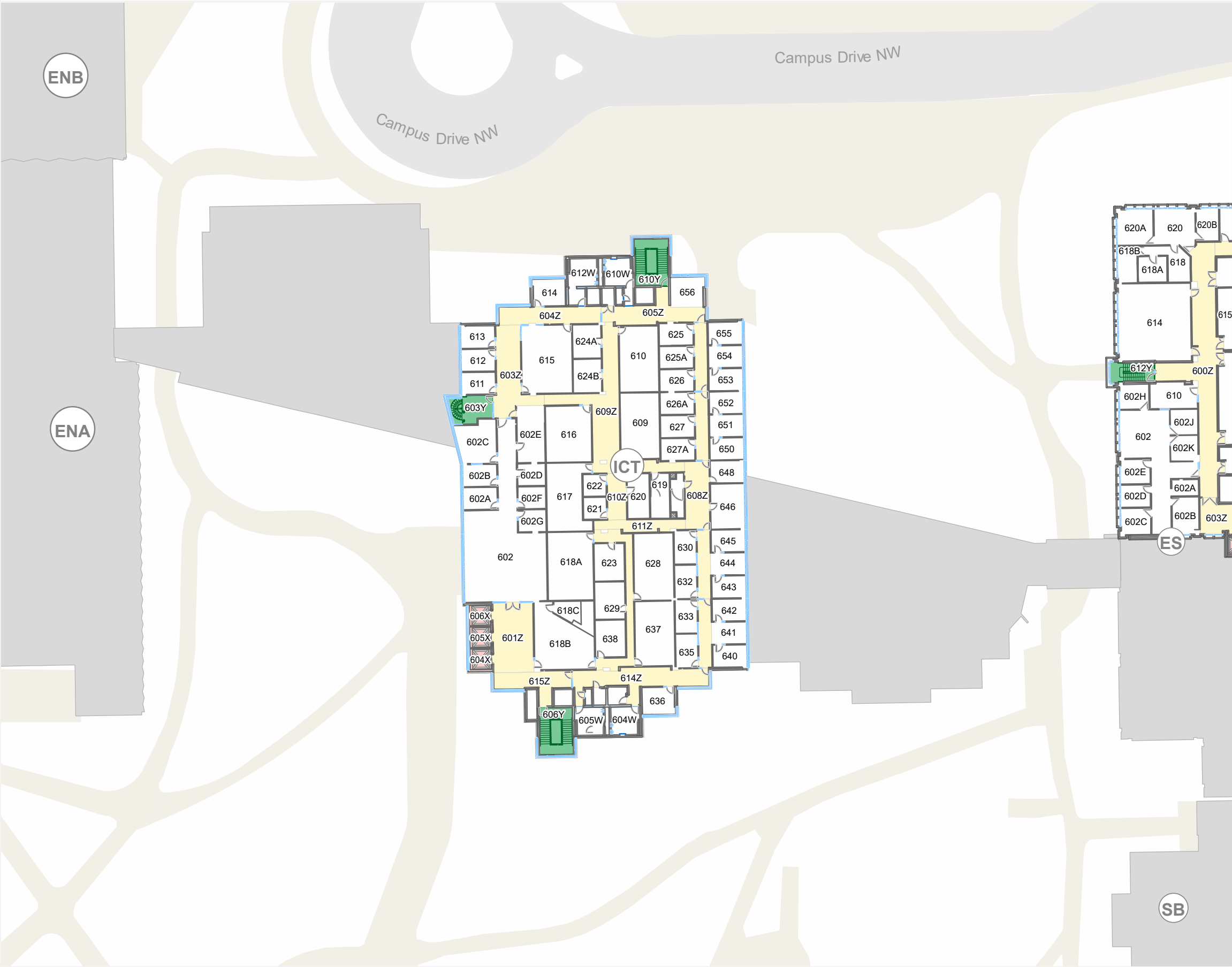
- A. Activate the **NEAREST FIRE ALARM PULL STATION**, located along exit path.
- B. Take coat and keys if immediately available.
- C. Evacuate building through the nearest exit. Use stairs - **DO NOT USE ELEVATORS**.
- D. Close all doors along your exit route.
- E. If directed by wardens, follow their instructions.
- F. Move away from the building and proceed to the Assembly Point.

If you have information regarding the emergency call **Campus Security** at **403-220-5333** from a safe location.

Evacuation Assembly Point Energy, Environment & Experiential Learning (EEEL)



- Building You Are In
- Assembly Point (EEEL)



Emergency Evacuation Procedures

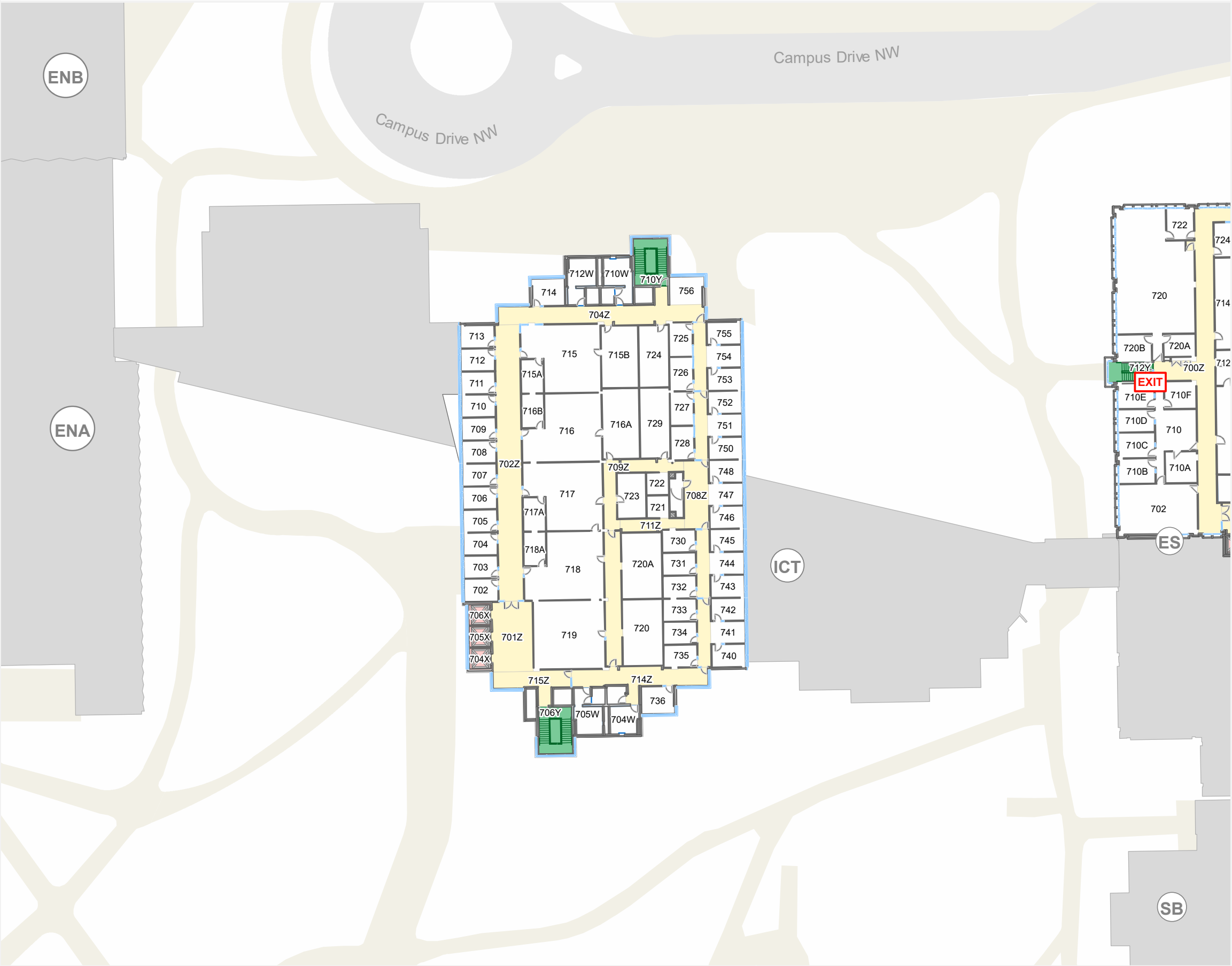
- A. Activate the **NEAREST FIRE ALARM PULL STATION**, located along exit path.
- B. Take coat and keys if immediately available.
- C. Evacuate building through the nearest exit. Use stairs - **DO NOT USE ELEVATORS**.
- D. Close all doors along your exit route.
- E. If directed by wardens, follow their instructions.
- F. Move away from the building and proceed to the Assembly Point.

If you have information regarding the emergency call **Campus Security** at **403-220-5333** from a safe location.

Evacuation Assembly Point Energy, Environment & Experiential Learning (EEEL)



- Building You Are In
- Assembly Point (EEEL)

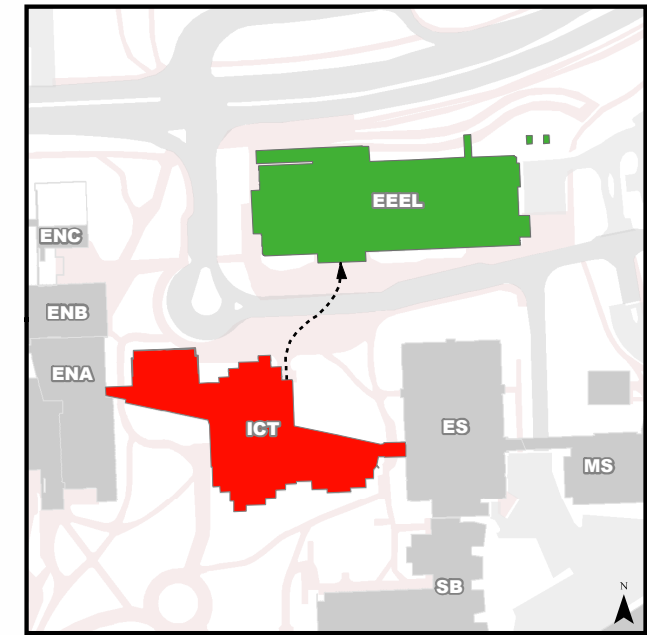


Emergency Evacuation Procedures

- A. Activate the **NEAREST FIRE ALARM PULL STATION**, located along exit path.
- B. Take coat and keys if immediately available.
- C. Evacuate building through the nearest exit. Use stairs - **DO NOT USE ELEVATORS**.
- D. Close all doors along your exit route.
- E. If directed by wardens, follow their instructions.
- F. Move away from the building and proceed to the Assembly Point.

If you have information regarding the emergency call **Campus Security** at **403-220-5333** from a safe location.

Evacuation Assembly Point Energy, Environment & Experiential Learning (EEEL)



- Building You Are In
- Assembly Point (EEEL)

