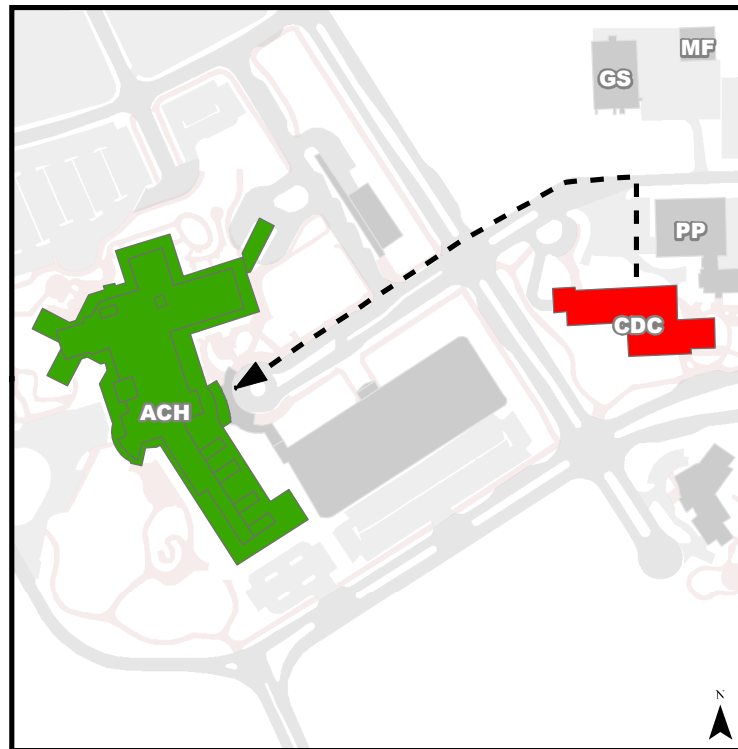


Emergency Evacuation Procedures

- A. Activate the **nearest** fire alarm pull station along exit path.
- B. Take coat and keys if immediately available.
- C. Evacuate building through the nearest exit. **Use stairs, do not use elevators.**
- D. Close all doors along your exit route.
- E. Move away from the building & proceed to Assembly Point
If you have information regarding the emergency call Campus Security at **403-220-5333** from a safe location

Evacuation Assembly Point

Renfrew and West Child Care Centre: Physical Plant, room 100
Remaining Occupants/groups: Alberta Children's Hospital (ACH)



- Building You Are In
- Assembly Point During an Emergency



Legend

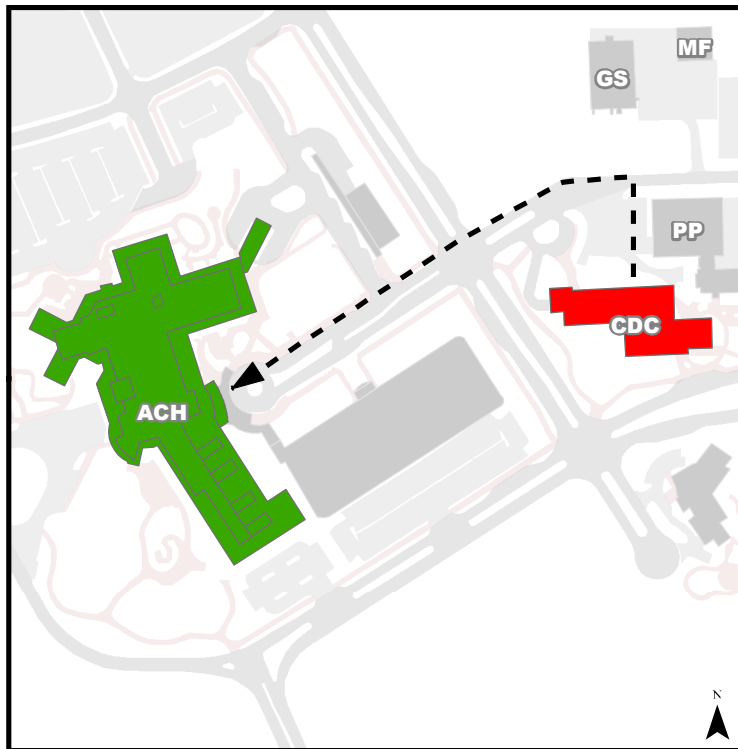
- | | |
|--|--|
| Rooms | Staircases |
| Washrooms | Hallways |
| Elevators | You Are Here |

Emergency Evacuation Procedures

- A. Activate the **nearest** fire alarm pull station along exit path.
- B. Take coat and keys if immediately available.
- C. Evacuate building through the nearest exit. **Use stairs, do not use elevators.**
- D. Close all doors along your exit route.
- E. Move away from the building & proceed to Assembly Point
If you have information regarding the emergency call Campus Security at **403-220-5333** from a safe location

Evacuation Assembly Point

Renfrew and West Child Care Centre: Physical Plant, room 100
Remaining Occupants/groups: Alberta Children's Hospital (ACH)



- Building You Are In
- Assembly Point During an Emergency



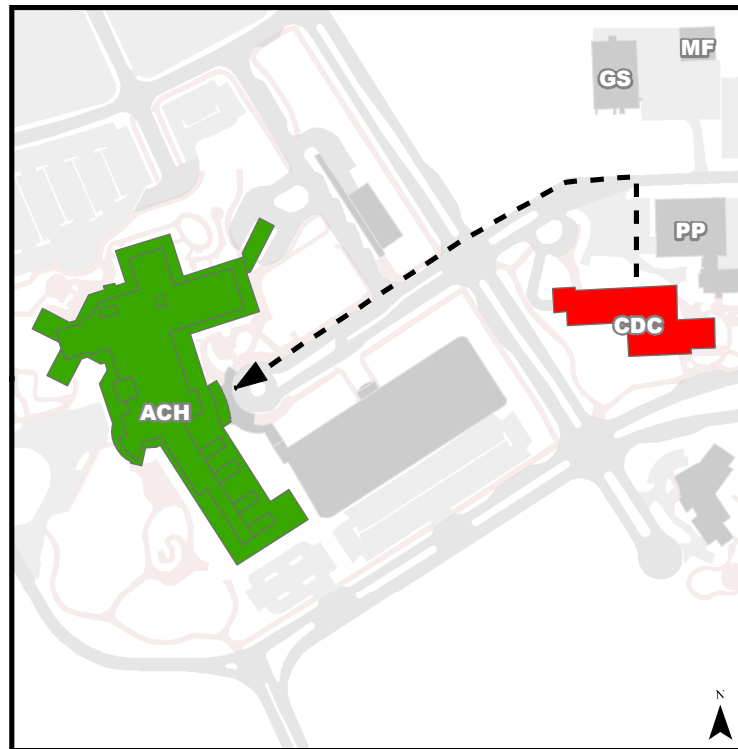
Legend	
 Rooms	 Staircases
 Washrooms	 Hallways
 Elevators	You Are Here

Emergency Evacuation Procedures

- A. Activate the **nearest** fire alarm pull station along exit path.
 - B. Take coat and keys if immediately available.
 - C. Evacuate building through the nearest exit. **Use stairs, do not use elevators.**
 - D. Close all doors along your exit route.
 - E. Move away from the building & proceed to Assembly Point
- If you have information regarding the emergency call Campus Security at **403-220-5333** from a safe location

Evacuation Assembly Point

Renfrew and West Child Care Centre: Physical Plant, room 100
 Remaining Occupants/groups: Alberta Children's Hospital (ACH)



- Building You Are In
- Assembly Point During an Emergency



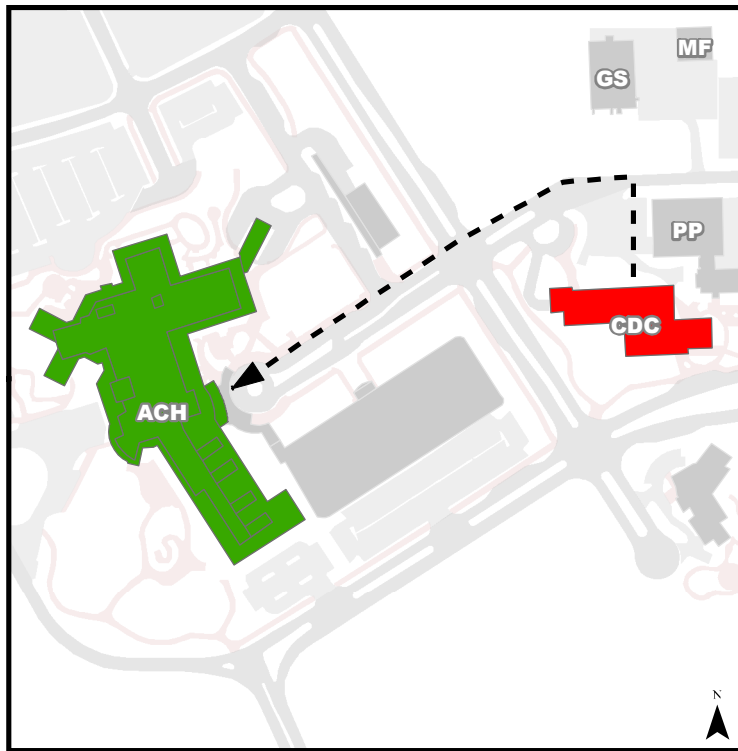
Legend	
 Rooms	 Staircases
 Washrooms	 Hallways
 Elevators	You Are Here

Emergency Evacuation Procedures

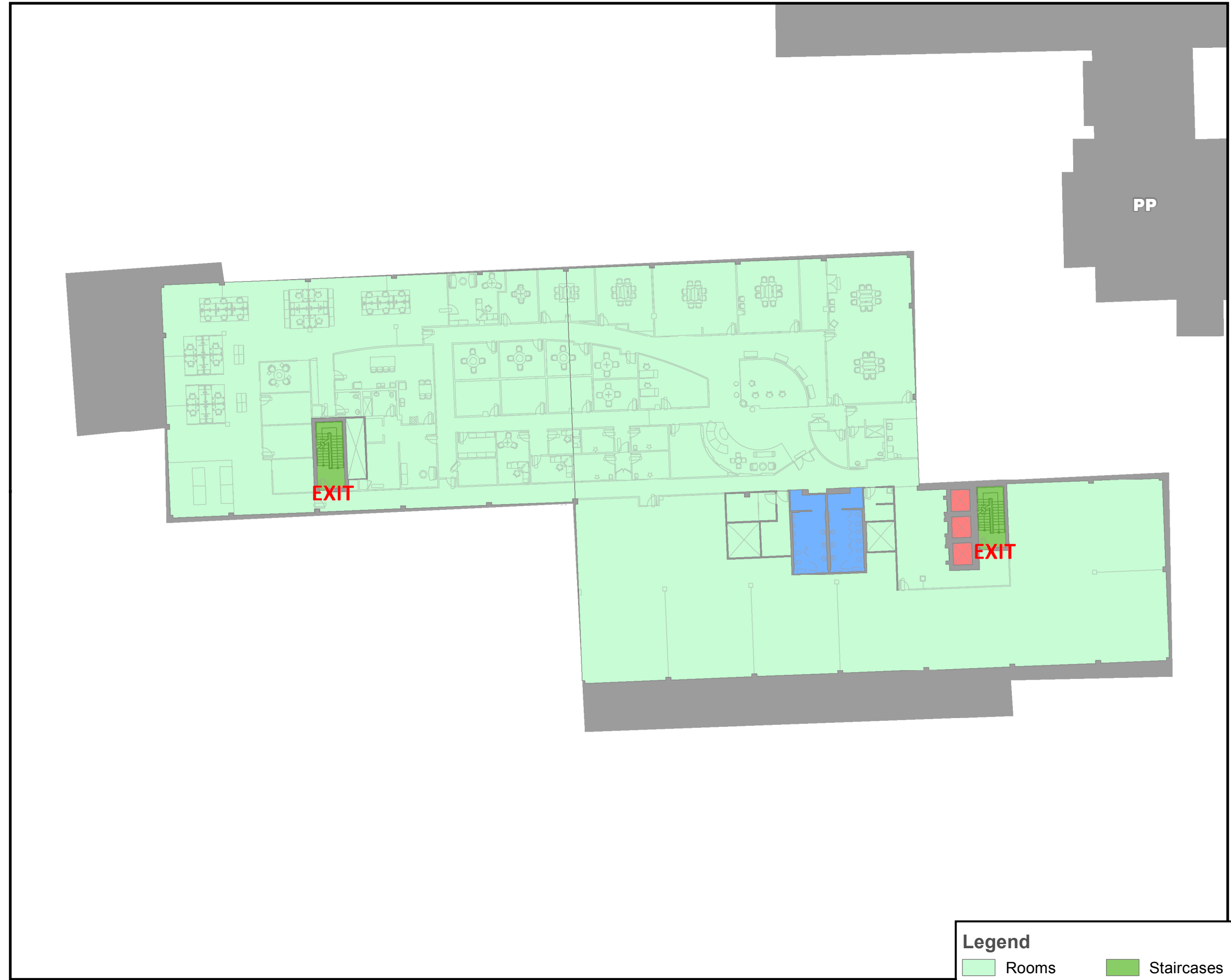
- A. Activate the **nearest** fire alarm pull station along exit path.
 - B. Take coat and keys if immediately available.
 - C. Evacuate building through the nearest exit. **Use stairs, do not use elevators.**
 - D. Close all doors along your exit route.
 - E. Move away from the building & proceed to Assembly Point
- If you have information regarding the emergency call Campus Security at **403-220-5333** from a safe location

Evacuation Assembly Point

Renfrew and West Child Care Centre: Physical Plant, room 100
 Remaining Occupants/groups: Alberta Children's Hospital (ACH)



- Building You Are In
- Assembly Point During an Emergency



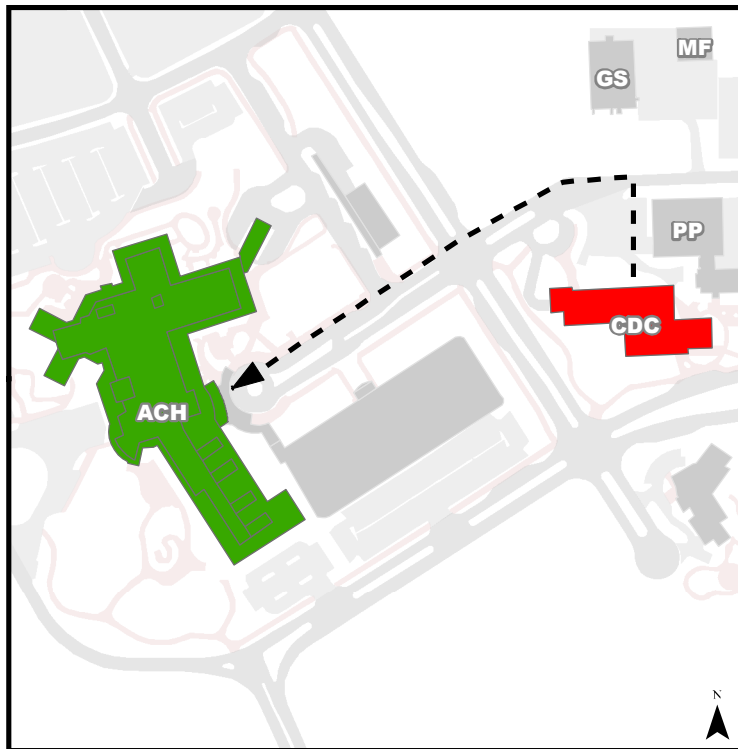
Legend	
 Rooms	 Staircases
 Washrooms	 Hallways
 Elevators	You Are Here

Emergency Evacuation Procedures

- A. Activate the **nearest** fire alarm pull station along exit path.
- B. Take coat and keys if immediately available.
- C. Evacuate building through the nearest exit. **Use stairs, do not use elevators.**
- D. Close all doors along your exit route.
- E. Move away from the building & proceed to Assembly Point
If you have information regarding the emergency call Campus Security at **403-220-5333** from a safe location

Evacuation Assembly Point

Renfrew and West Child Care Centre: Physical Plant, room 100
Remaining Occupants/groups: Alberta Children's Hospital (ACH)



- Building You Are In
- Assembly Point During an Emergency



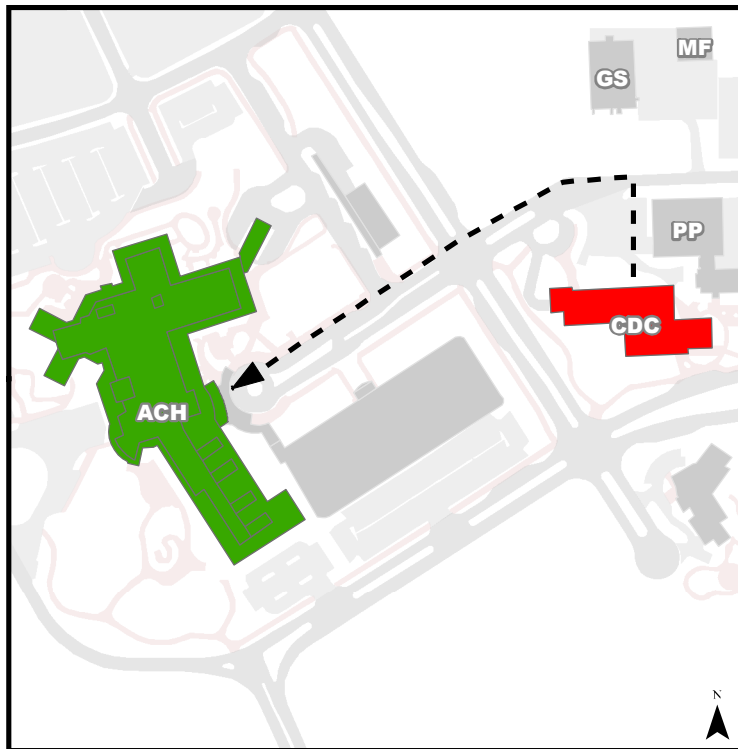
Legend	
 Rooms	 Staircases
 Washrooms	 Hallways
 Elevators	You Are Here

Emergency Evacuation Procedures

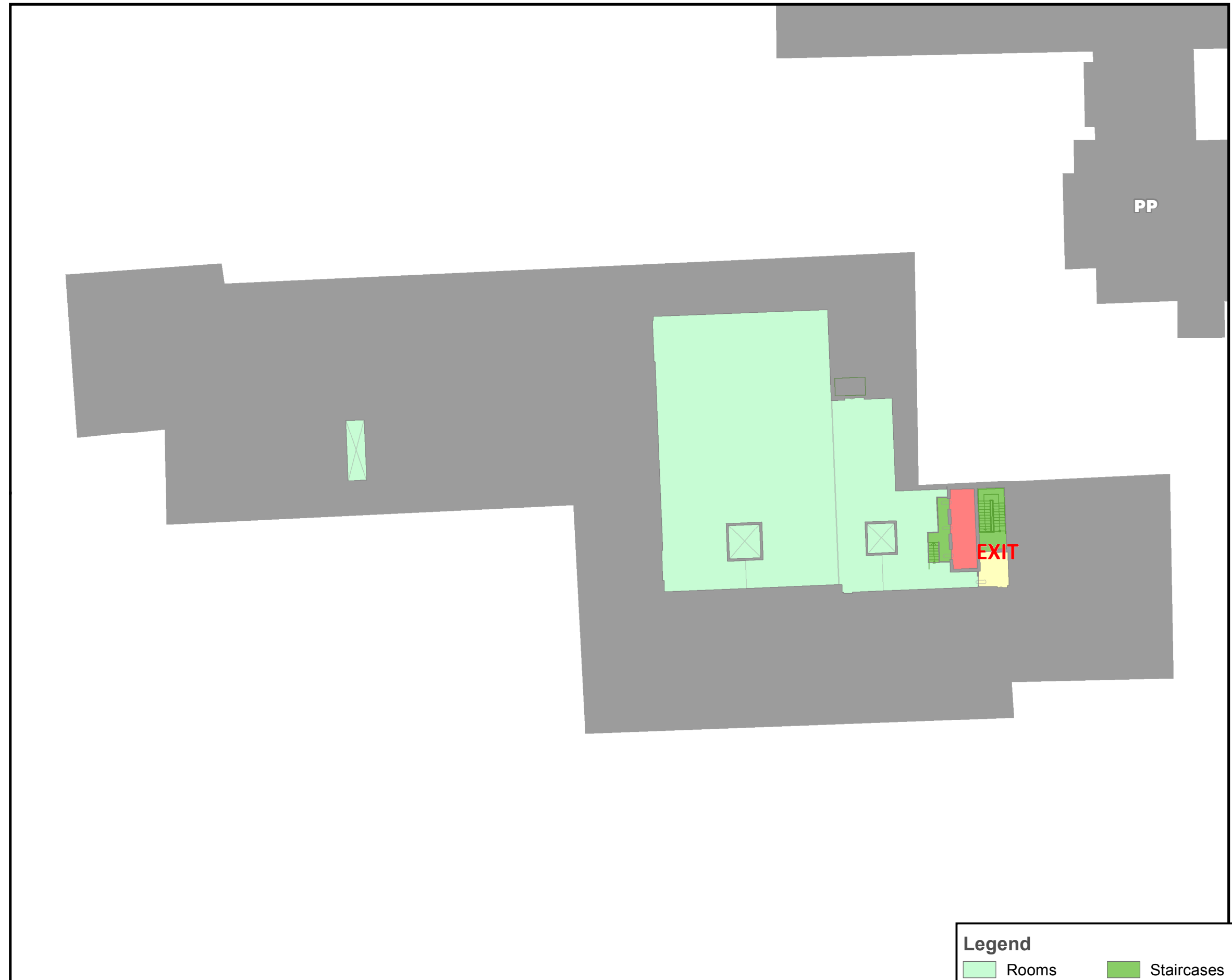
- A. Activate the **nearest** fire alarm pull station along exit path.
- B. Take coat and keys if immediately available.
- C. Evacuate building through the nearest exit. **Use stairs, do not use elevators.**
- D. Close all doors along your exit route.
- E. Move away from the building & proceed to Assembly Point
If you have information regarding the emergency call Campus Security at **403-220-5333** from a safe location

Evacuation Assembly Point

Renfrew and West Child Care Centre: Physical Plant, room 100
Remaining Occupants/groups: Alberta Children's Hospital (ACH)



- Building You Are In
- Assembly Point During an Emergency



Legend	
 Rooms	 Staircases
 Washrooms	 Hallways
 Elevators	You Are Here