

UNIVERSITY OF CALGARY

Evacuation Procedures

- Activate the nearest fire alarm pull station located along exit path.
- Evacuate building through the nearest exit. Use stairs, do not use elevators.
- Take coat and keys only if immediately available.
- Close doors behind you along your exit route.
- Move away from the building.
- Proceed to the Assembly Point.

Assembly Point

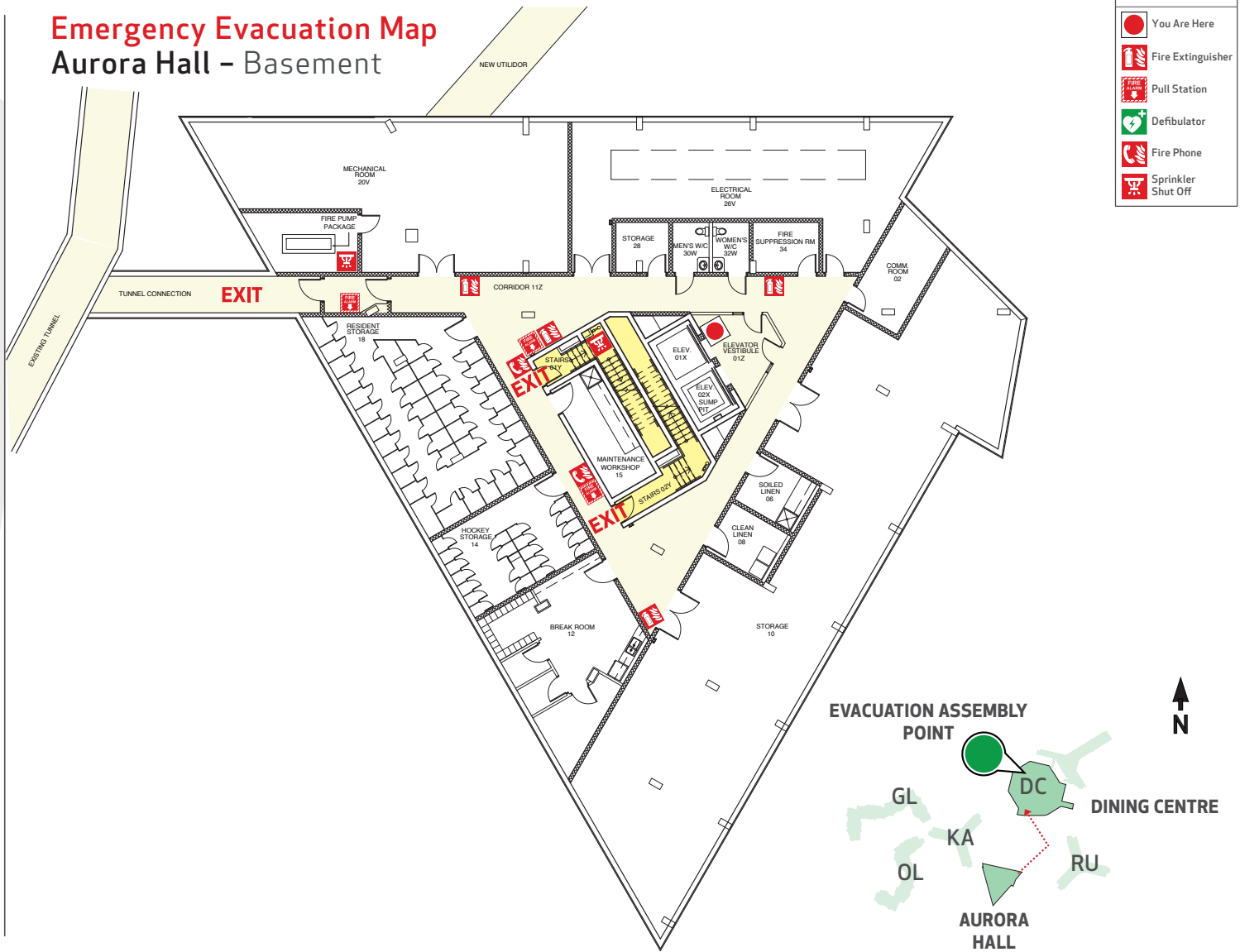
Primary:
Dining Centre

Campus Security

403-220-5333

Report emergencies from a safe location.

Emergency Evacuation Map Aurora Hall - Basement



UNIVERSITY OF CALGARY

Evacuation Procedures

- Activate the nearest fire alarm pull station located along exit path.
- Evacuate building through the nearest exit. Use stairs, do not use elevators.
- Take coat and keys only if immediately available.
- Close doors behind you along your exit route.
- Move away from the building.
- Proceed to the Assembly Point.

Assembly Point

Primary:
Dining Centre

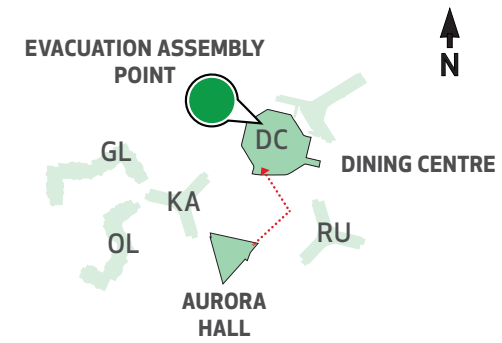
Campus Security 403-220-5333

Report emergencies from a safe location.

Emergency Evacuation Map Aurora Hall - Floor Eight



Legend	
	You Are Here
	Fire Extinguisher
	Pull Station
	Defibrillator
	Fire Phone
	Sprinkler Shut Off



UNIVERSITY OF CALGARY

Evacuation Procedures

- Activate the nearest fire alarm pull station located along exit path.
- Evacuate building through the nearest exit. Use stairs, do not use elevators.
- Take coat and keys only if immediately available.
- Close doors behind you along your exit route.
- Move away from the building.
- Proceed to the Assembly Point.

Assembly Point

Primary:
Dining Centre

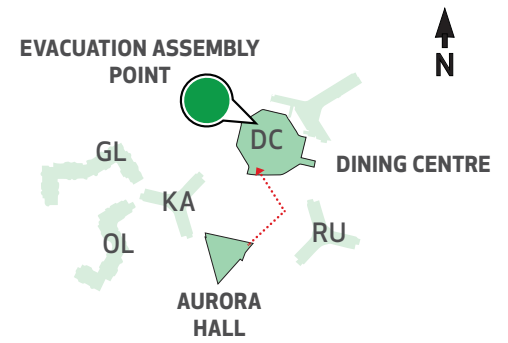
Campus Security 403-220-5333

Report emergencies from a safe location.

Emergency Evacuation Map Aurora Hall - Floor Five



Legend	
	You Are Here
	Fire Extinguisher
	Pull Station
	Defibrillator
	Fire Phone
	Sprinkler Shut Off



UNIVERSITY OF CALGARY

Evacuation Procedures

- Activate the nearest fire alarm pull station located along exit path.
- Evacuate building through the nearest exit. Use stairs, do not use elevators.
- Take coat and keys only if immediately available.
- Close doors behind you along your exit route.
- Move away from the building.
- Proceed to the Assembly Point.

Assembly Point

Primary:
Dining Centre

Campus Security 403-220-5333

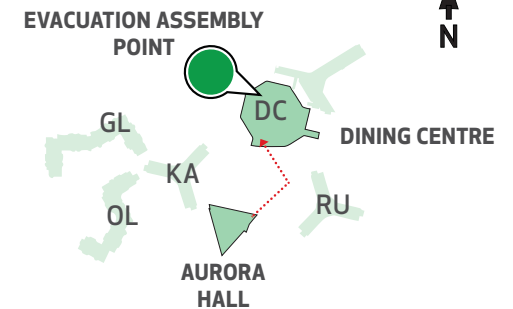
Report emergencies from a safe location.

Emergency Evacuation Map Aurora Hall – Floor Four



Legend

- You Are Here
- Fire Extinguisher
- Pull Station
- Defibrillator
- Fire Phone
- Sprinkler Shut Off



UNIVERSITY OF CALGARY

Evacuation Procedures

- Activate the nearest fire alarm pull station located along exit path.
- Evacuate building through the nearest exit. Use stairs, do not use elevators.
- Take coat and keys only if immediately available.
- Close doors behind you along your exit route.
- Move away from the building.
- Proceed to the Assembly Point.

Assembly Point

Primary:
Dining Centre

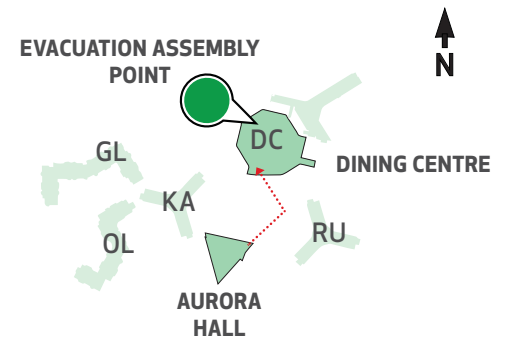
Campus Security 403-220-5333

Report emergencies from a safe location.

Emergency Evacuation Map Aurora Hall - Floor Seven



Legend	
	You Are Here
	Fire Extinguisher
	Pull Station
	Defibrillator
	Fire Phone
	Sprinkler Shut Off



UNIVERSITY OF CALGARY

Evacuation Procedures

- Activate the nearest fire alarm pull station located along exit path.
- Evacuate building through the nearest exit. Use stairs, do not use elevators.
- Take coat and keys only if immediately available.
- Close doors behind you along your exit route.
- Move away from the building.
- Proceed to the Assembly Point.

Assembly Point

Primary:
Dining Centre

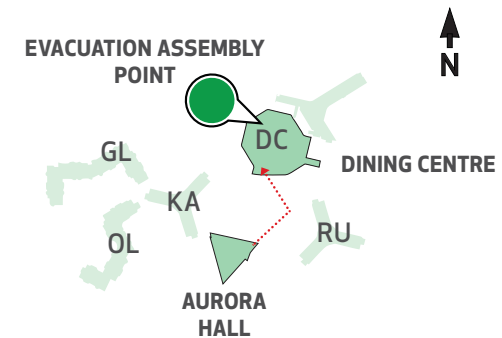
Campus Security 403-220-5333

Report emergencies from a safe location.

Emergency Evacuation Map Aurora Hall - Floor Six



Legend	
	You Are Here
	Fire Extinguisher
	Pull Station
	Defibrillator
	Fire Phone
	Sprinkler Shut Off



UNIVERSITY OF CALGARY

Evacuation Procedures

- Activate the nearest fire alarm pull station located along exit path.
- Evacuate building through the nearest exit. Use stairs, do not use elevators.
- Take coat and keys only if immediately available.
- Close doors behind you along your exit route.
- Move away from the building.
- Proceed to the Assembly Point.

Assembly Point

Primary:
Dining Centre

Campus Security 403-220-5333

Report emergencies from a safe location.

Emergency Evacuation Map Aurora Hall - Floor Two



Legend	
	You Are Here
	Fire Extinguisher
	Pull Station
	Defibrillator
	Fire Phone
	Sprinkler Shut Off

