

Emergency Evacuation Procedures

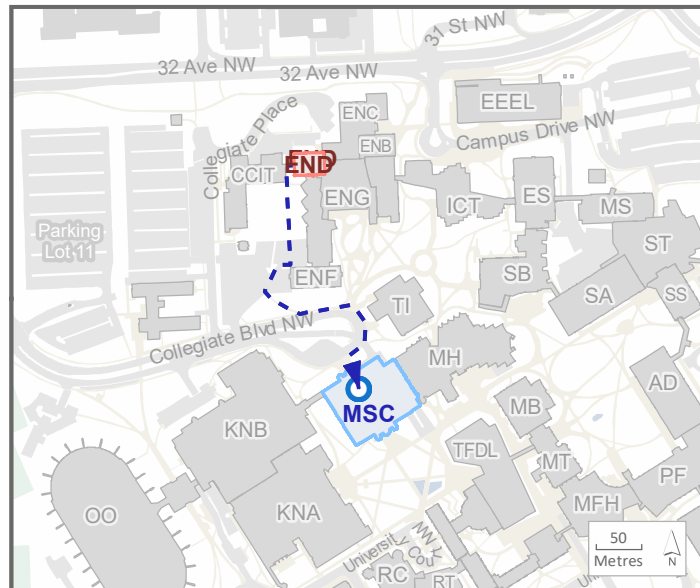
- A. Activate the **NEAREST FIRE ALARM PULL STATION**, located along exit path.
- B. Take coat and keys if immediately available.
- C. Evacuate building through the nearest exit. Use stairs - **DO NOT USE ELEVATORS.**
- D. Close all doors along your exit route.
- E. If directed by wardens, follow their instructions.
- F. Move away from the building and proceed to the Assembly Point.

If you have information regarding the emergency call **Campus Security** at **403-220-5333** from a safe location.

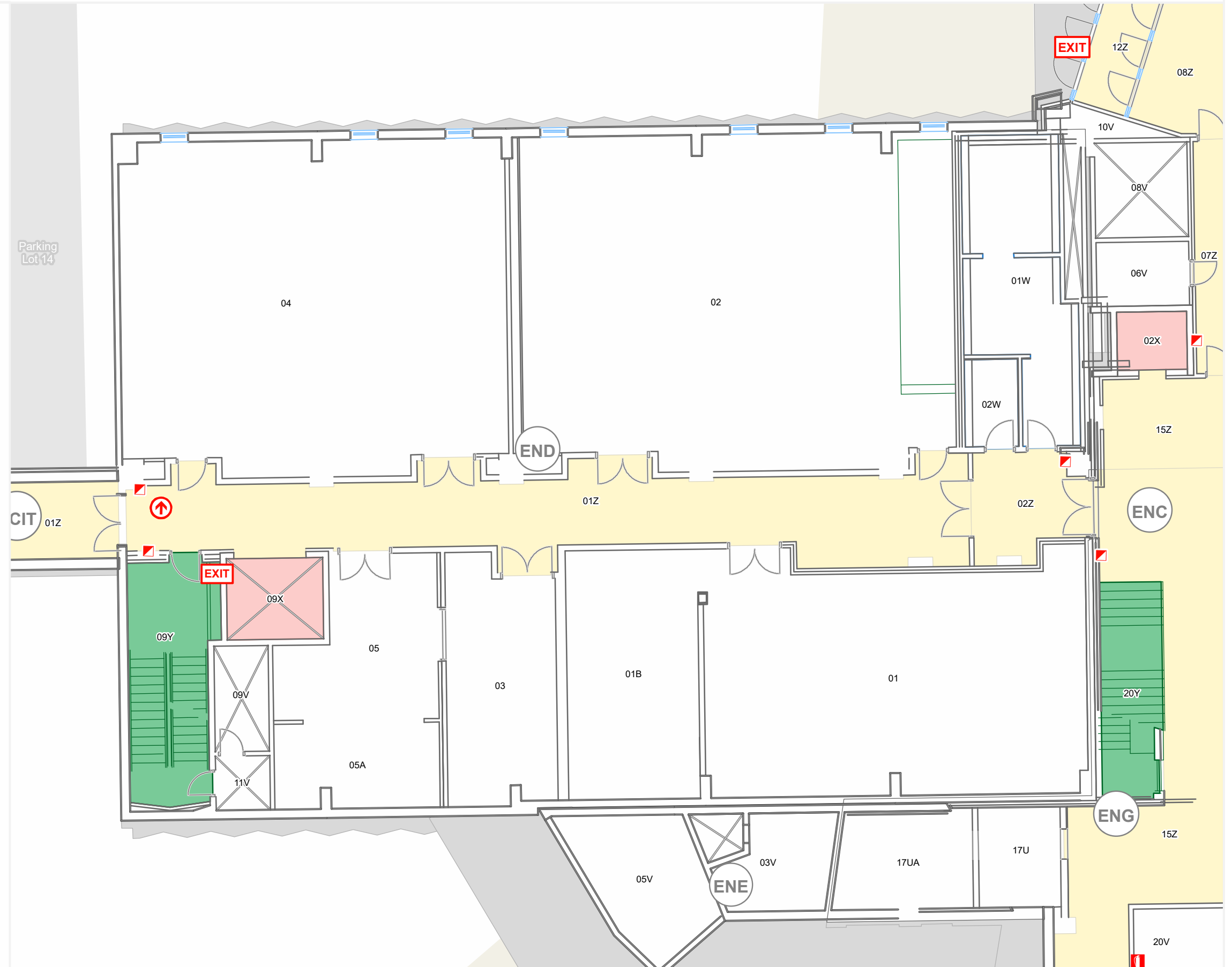
Legend

- You Are Here
- Pull Stations
- Fire Extinguishers

Assembly Point: MSC - North Courtyard



Current Building Assembly Building



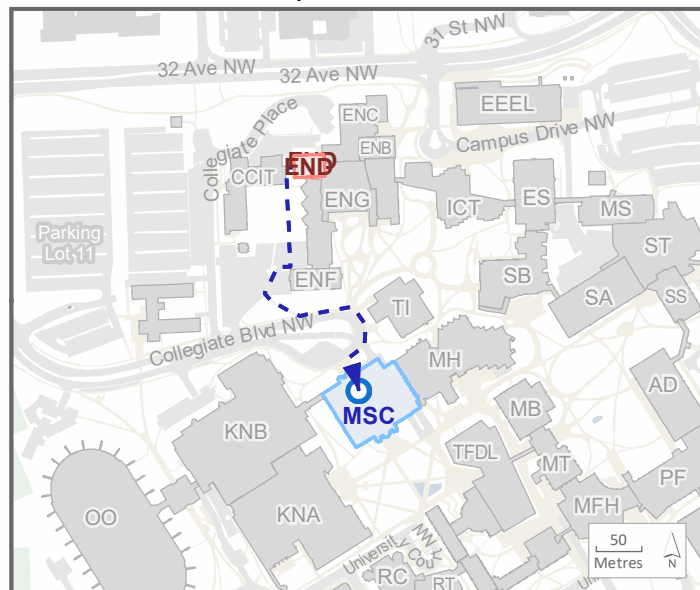
Emergency Evacuation Procedures

- A. Activate the **NEAREST FIRE ALARM PULL STATION**, located along exit path.
- B. Take coat and keys if immediately available.
- C. Evacuate building through the nearest exit. Use stairs - **DO NOT USE ELEVATORS**.
- D. Close all doors along your exit route.
- E. If directed by wardens, follow their instructions.
- F. Move away from the building and proceed to the Assembly Point.

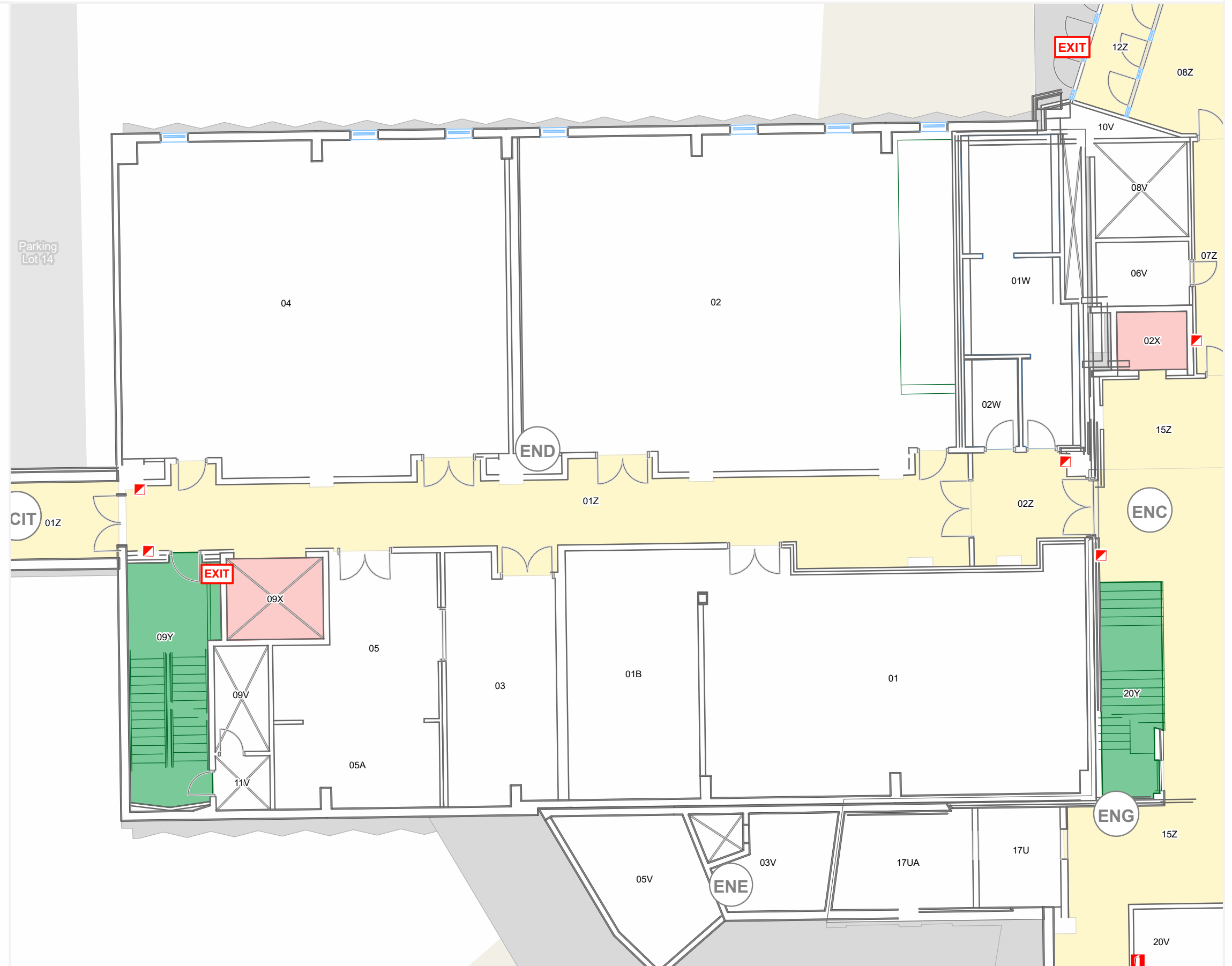
If you have information regarding the emergency call **Campus Security** at **403-220-5333** from a safe location.



Assembly Point: MSC - North Courtyard



Current Building Assembly Building



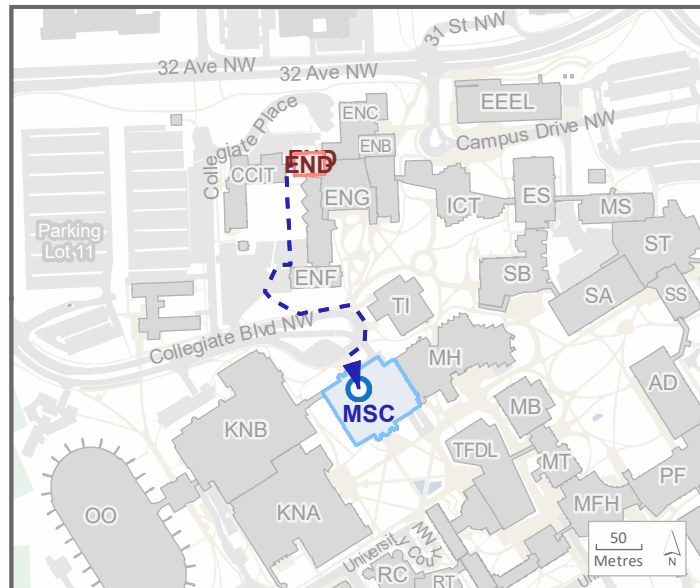
Emergency Evacuation Procedures

- A. Activate the **NEAREST FIRE ALARM PULL STATION**, located along exit path.
- B. Take coat and keys if immediately available.
- C. Evacuate building through the nearest exit. Use stairs - **DO NOT USE ELEVATORS**.
- D. Close all doors along your exit route.
- E. If directed by wardens, follow their instructions.
- F. Move away from the building and proceed to the Assembly Point.

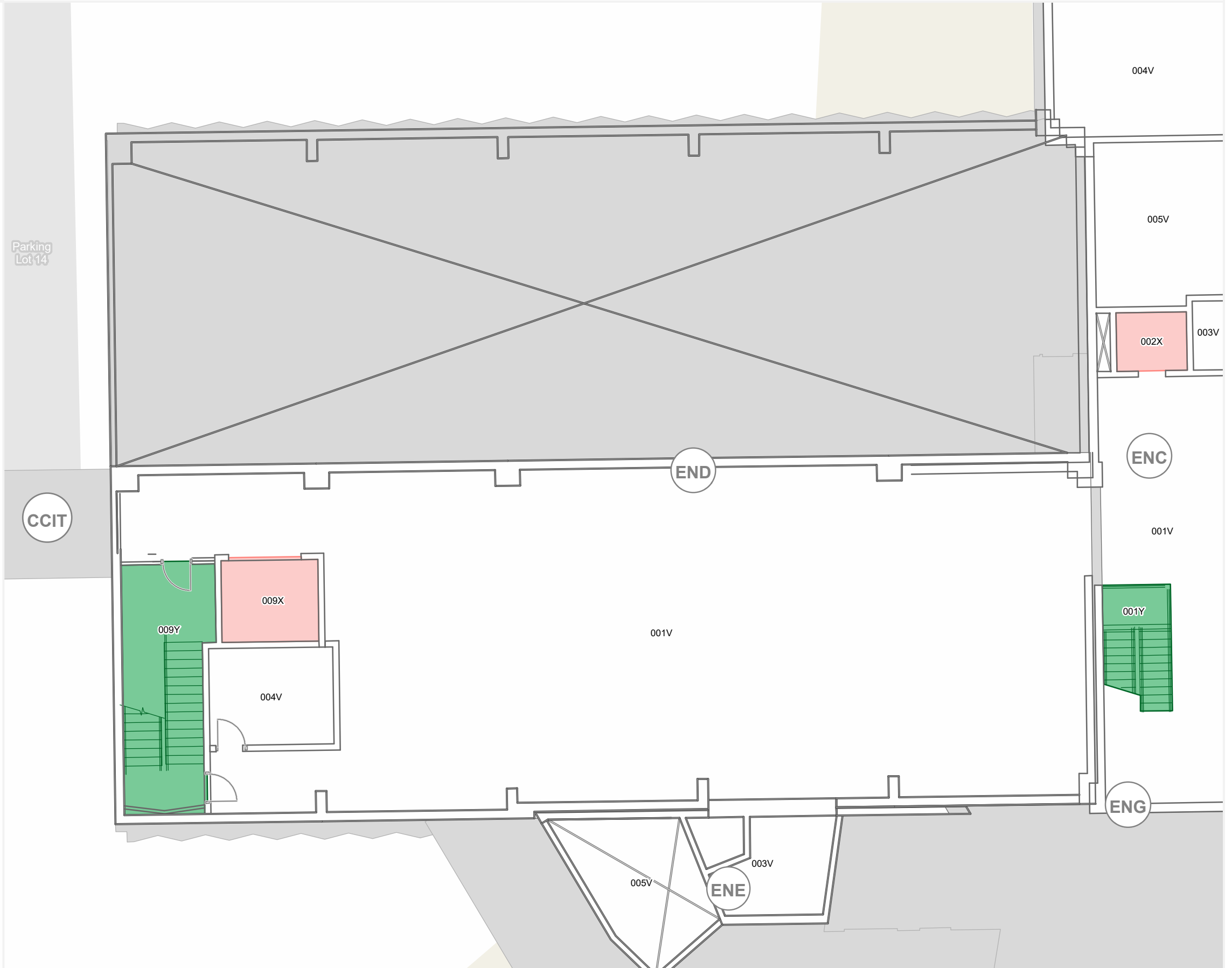
If you have information regarding the emergency call **Campus Security** at **403-220-5333** from a safe location.

Legend

Assembly Point: MSC - North Courtyard



■ Current Building
 ■ Assembly Building

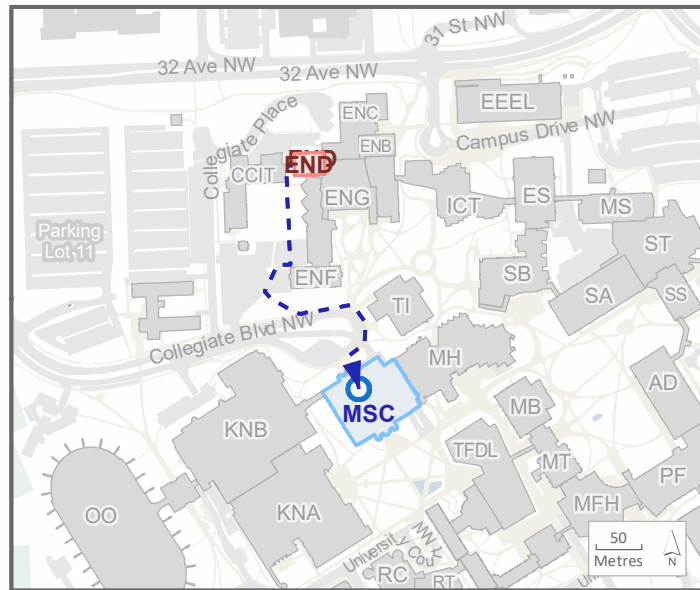


Emergency Evacuation Procedures

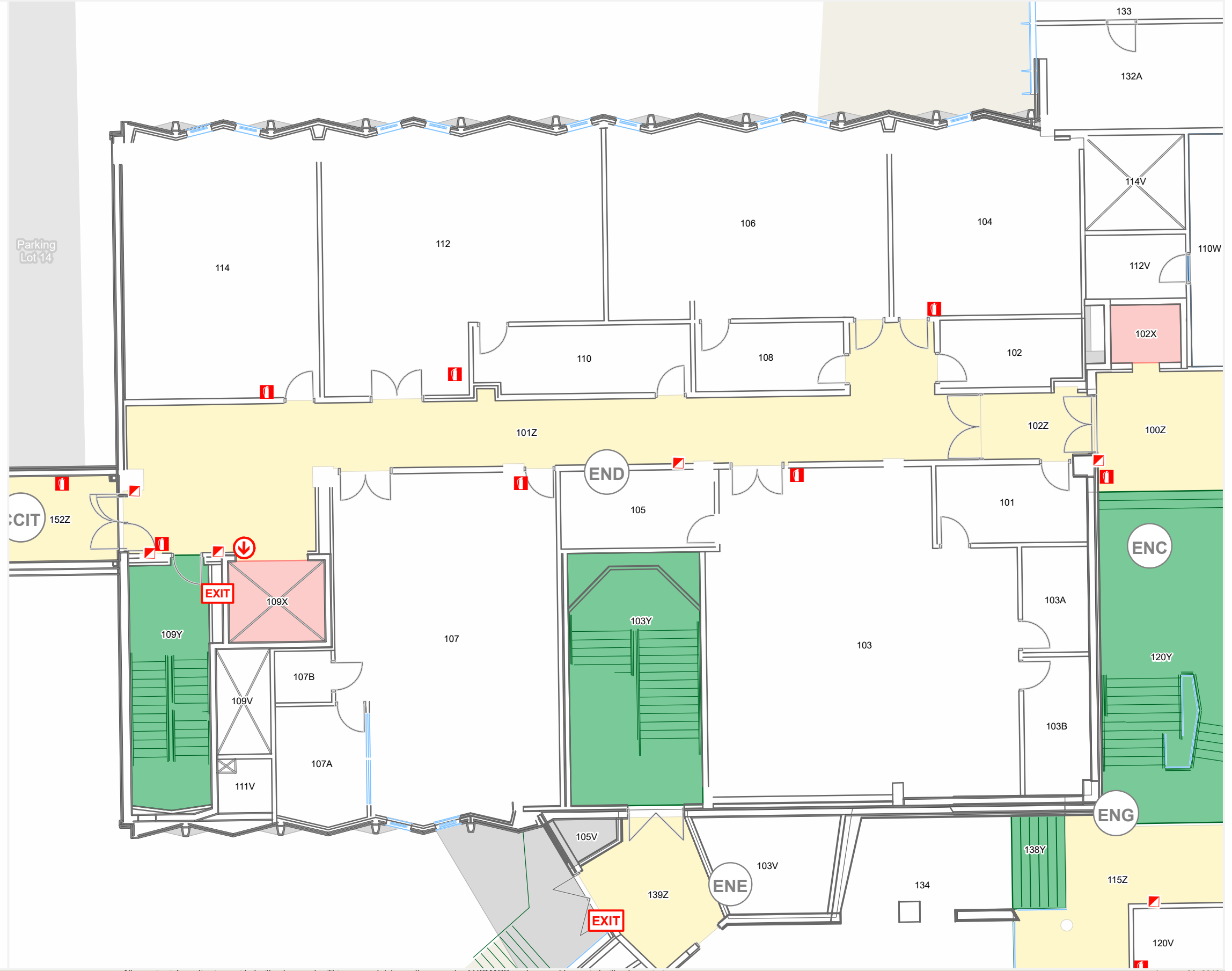
- A. Activate the **NEAREST FIRE ALARM PULL STATION**, located along exit path.
 - B. Take coat and keys if immediately available.
 - C. Evacuate building through the nearest exit. Use stairs - **DO NOT USE ELEVATORS**.
 - D. Close all doors along your exit route.
 - E. If directed by wardens, follow their instructions.
 - F. Move away from the building and proceed to the Assembly Point.
- If you have information regarding the emergency call **Campus Security** at **403-220-5333** from a safe location.



Assembly Point:
MSC - North Courtyard



Legend: Red square = Current Building, Blue square = Assembly Building



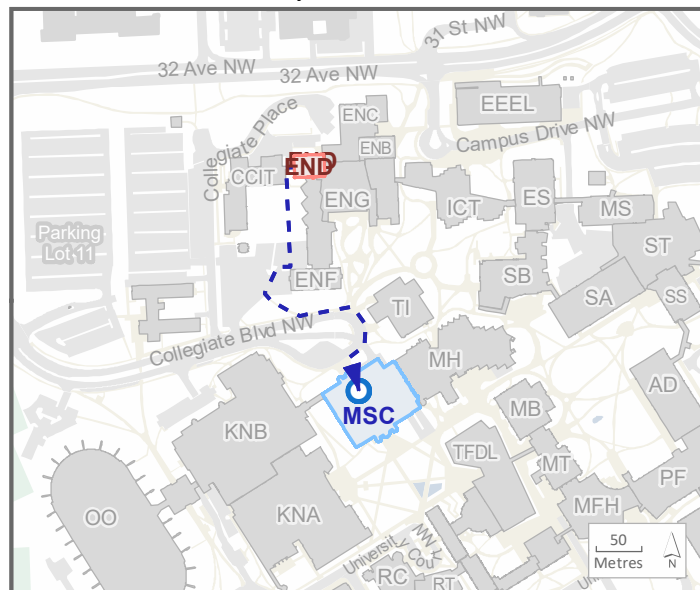
Emergency Evacuation Procedures

- A. Activate the **NEAREST FIRE ALARM PULL STATION**, located along exit path.
- B. Take coat and keys if immediately available.
- C. Evacuate building through the nearest exit. Use stairs - **DO NOT USE ELEVATORS**.
- D. Close all doors along your exit route.
- E. If directed by wardens, follow their instructions.
- F. Move away from the building and proceed to the Assembly Point.

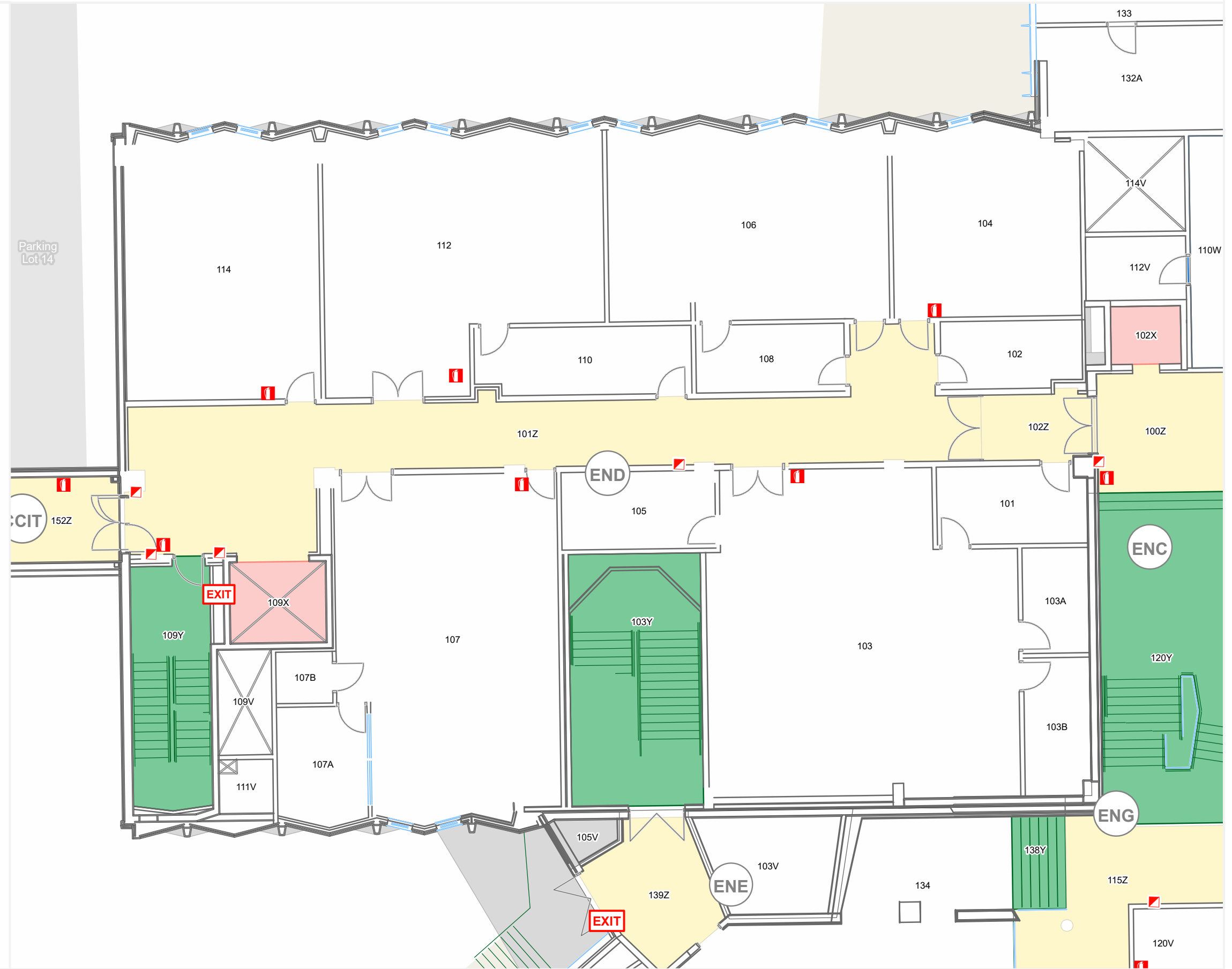
If you have information regarding the emergency call **Campus Security** at **403-220-5333** from a safe location.



Assembly Point: MSC - North Courtyard



Legend:
Red square = Current Building
Blue square = Assembly Building



Emergency Evacuation Procedures

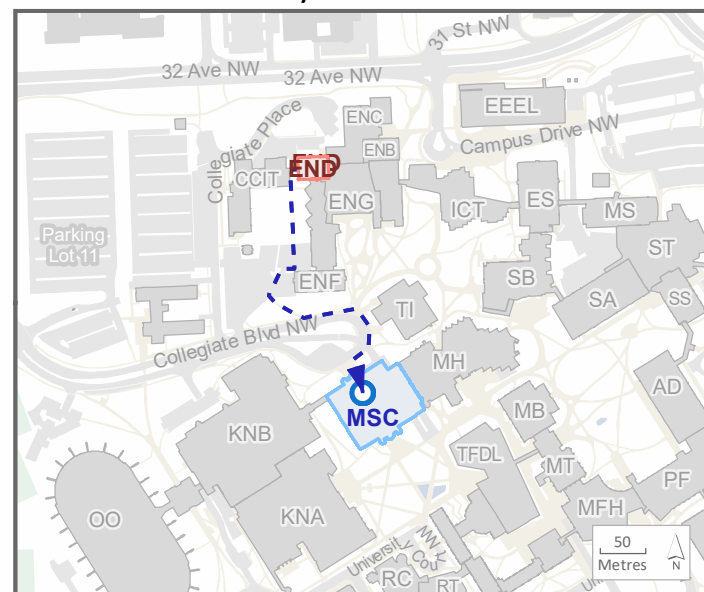
- A. Activate the **NEAREST FIRE ALARM PULL STATION**, located along exit path.
- B. Take coat and keys if immediately available.
- C. Evacuate building through the nearest exit. Use stairs - **DO NOT USE ELEVATORS**.
- D. Close all doors along your exit route.
- E. If directed by wardens, follow their instructions.
- F. Move away from the building and proceed to the Assembly Point.

If you have information regarding the emergency call **Campus Security** at **403-220-5333** from a safe location.

Legend

- You Are Here
- Pull Stations
- Fire Extinguishers

Assembly Point: MSC - North Courtyard



- Current Building
- Assembly Building

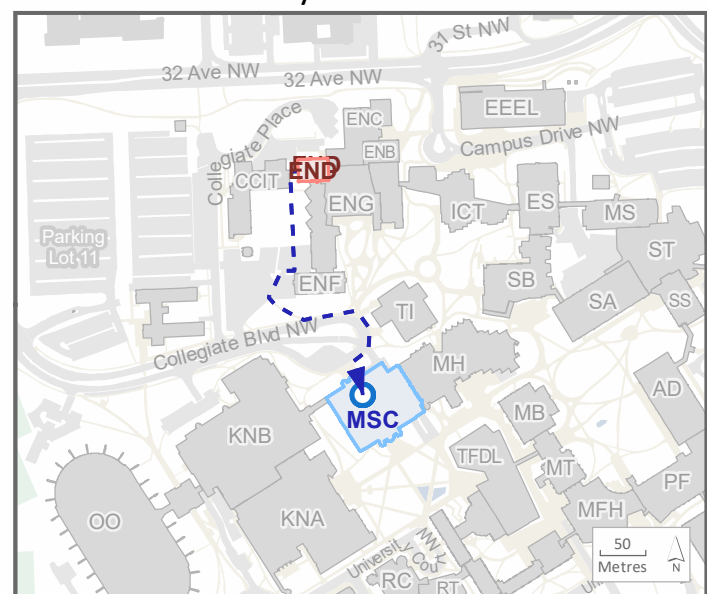


Emergency Evacuation Procedures

- A. Activate the **NEAREST FIRE ALARM PULL STATION**, located along exit path.
- B. Take coat and keys if immediately available.
- C. Evacuate building through the nearest exit. Use stairs - **DO NOT USE ELEVATORS**.
- D. Close all doors along your exit route.
- E. If directed by wardens, follow their instructions.
- F. Move away from the building and proceed to the Assembly Point.

If you have information regarding the emergency call **Campus Security** at **403-220-5333** from a safe location.

Assembly Point: MSC - North Courtyard



Current Building Assembly Building



Emergency Evacuation Procedures

- A. Activate the **NEAREST FIRE ALARM PULL STATION**, located along exit path.
- B. Take coat and keys if immediately available.
- C. Evacuate building through the nearest exit. Use stairs - **DO NOT USE ELEVATORS**.
- D. Close all doors along your exit route.
- E. If directed by wardens, follow their instructions.
- F. Move away from the building and proceed to the Assembly Point.

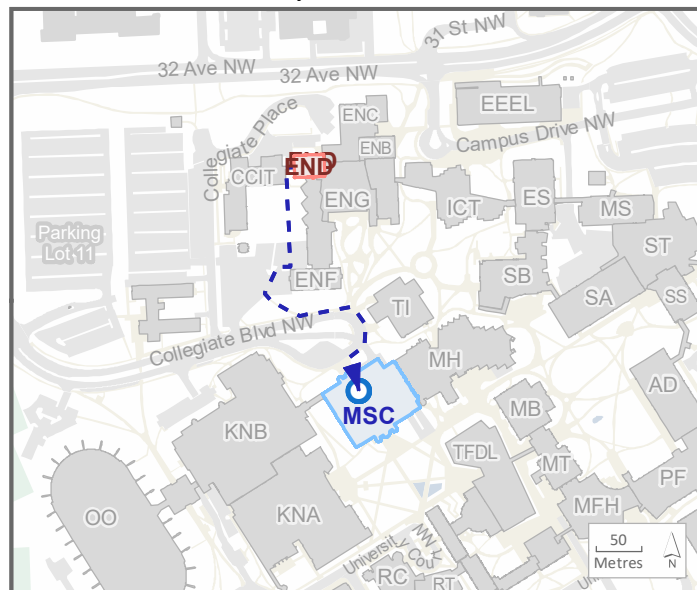
If you have information regarding the emergency call **Campus Security** at **403-220-5333** from a safe location.

Legend

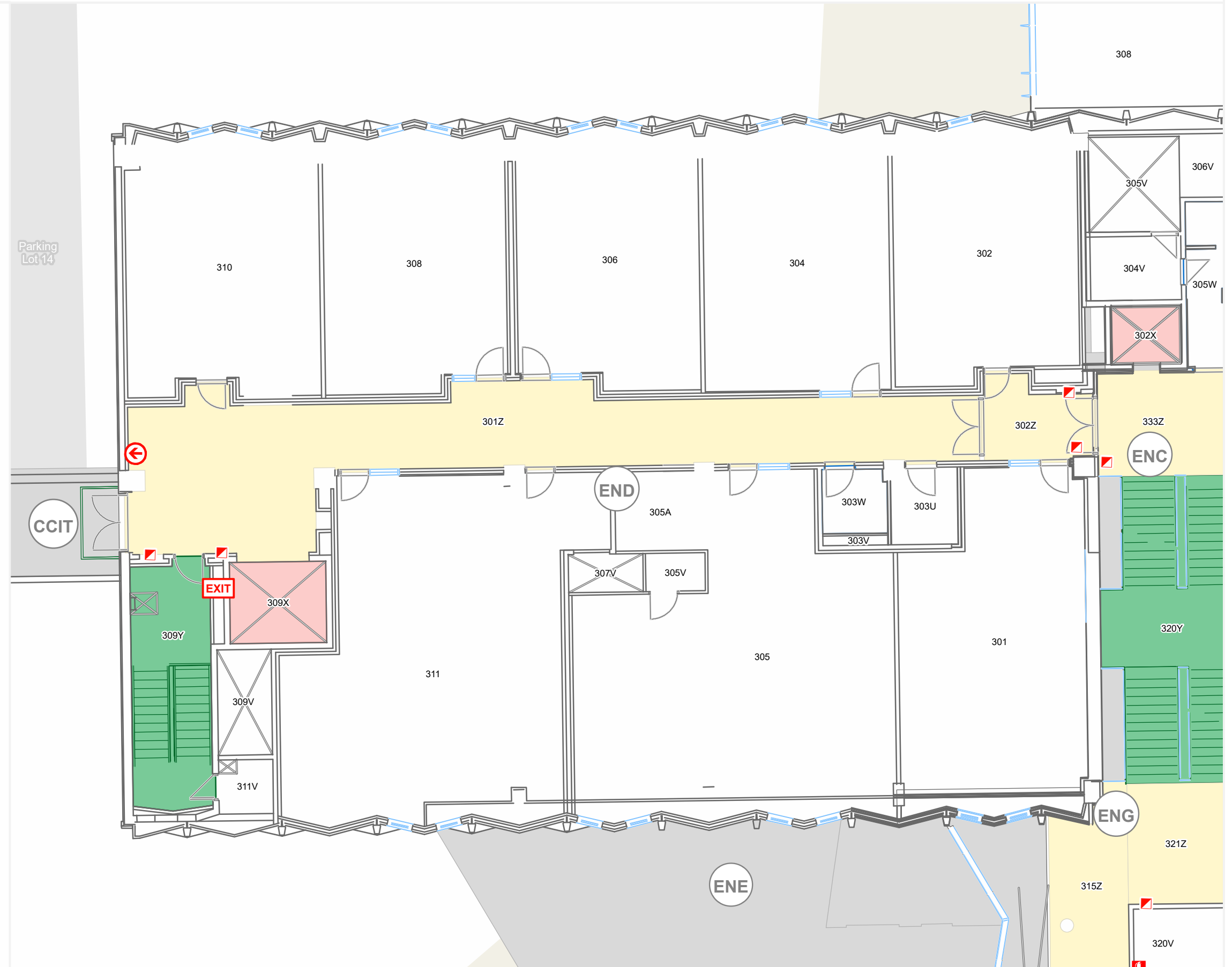
- You Are Here
- Pull Stations
- Fire Extinguishers

Assembly Point:

MSC - North Courtyard



Current Building Assembly Building



Emergency Evacuation Procedures

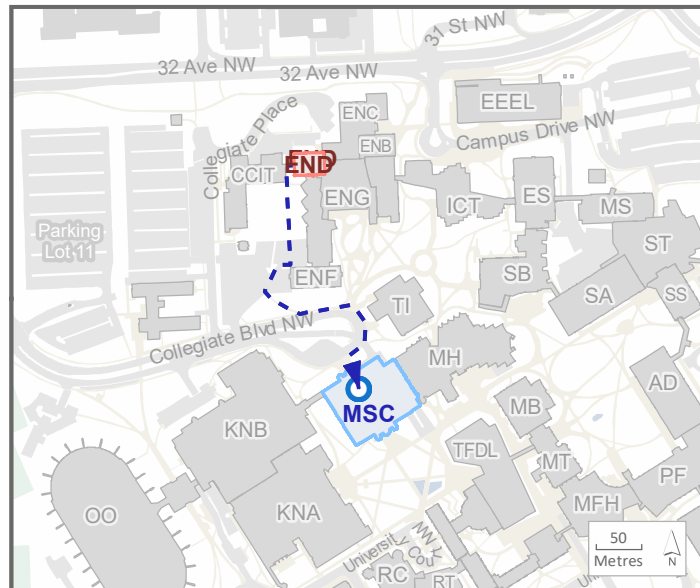
- A. Activate the **NEAREST FIRE ALARM PULL STATION**, located along exit path.
- B. Take coat and keys if immediately available.
- C. Evacuate building through the nearest exit. Use stairs - **DO NOT USE ELEVATORS**.
- D. Close all doors along your exit route.
- E. If directed by wardens, follow their instructions.
- F. Move away from the building and proceed to the Assembly Point.

If you have information regarding the emergency call **Campus Security** at **403-220-5333** from a safe location.



Assembly Point:

MSC - North Courtyard



Current Building Assembly Building

