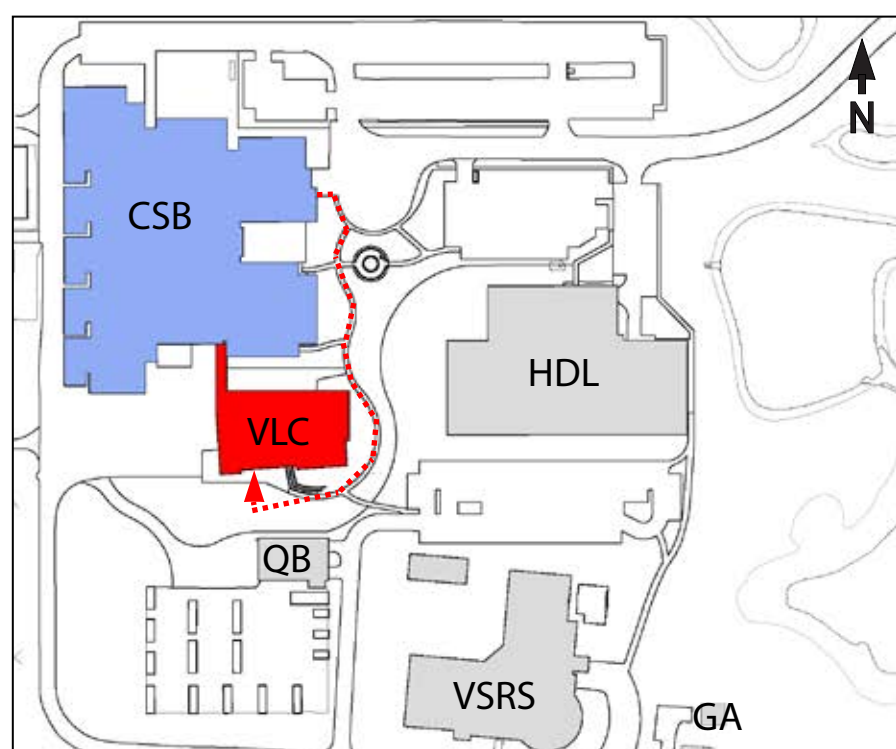


Emergency Evacuation Procedures

- Activate the **NEAREST FIRE ALARM PULL STATION**, located along exit path.
- Take coat and keys if immediately available.
- Evacuate building through the nearest exit. Use stairs - **DO NOT USE ELEVATORS**.
- Close all doors along your exit route.
- If directed by wardens, follow their instructions.
- Move away from the building and proceed to the Assembly Point.
- If you have information regarding the emergency call **Campus Security** at **403-220-5333** from a safe location.

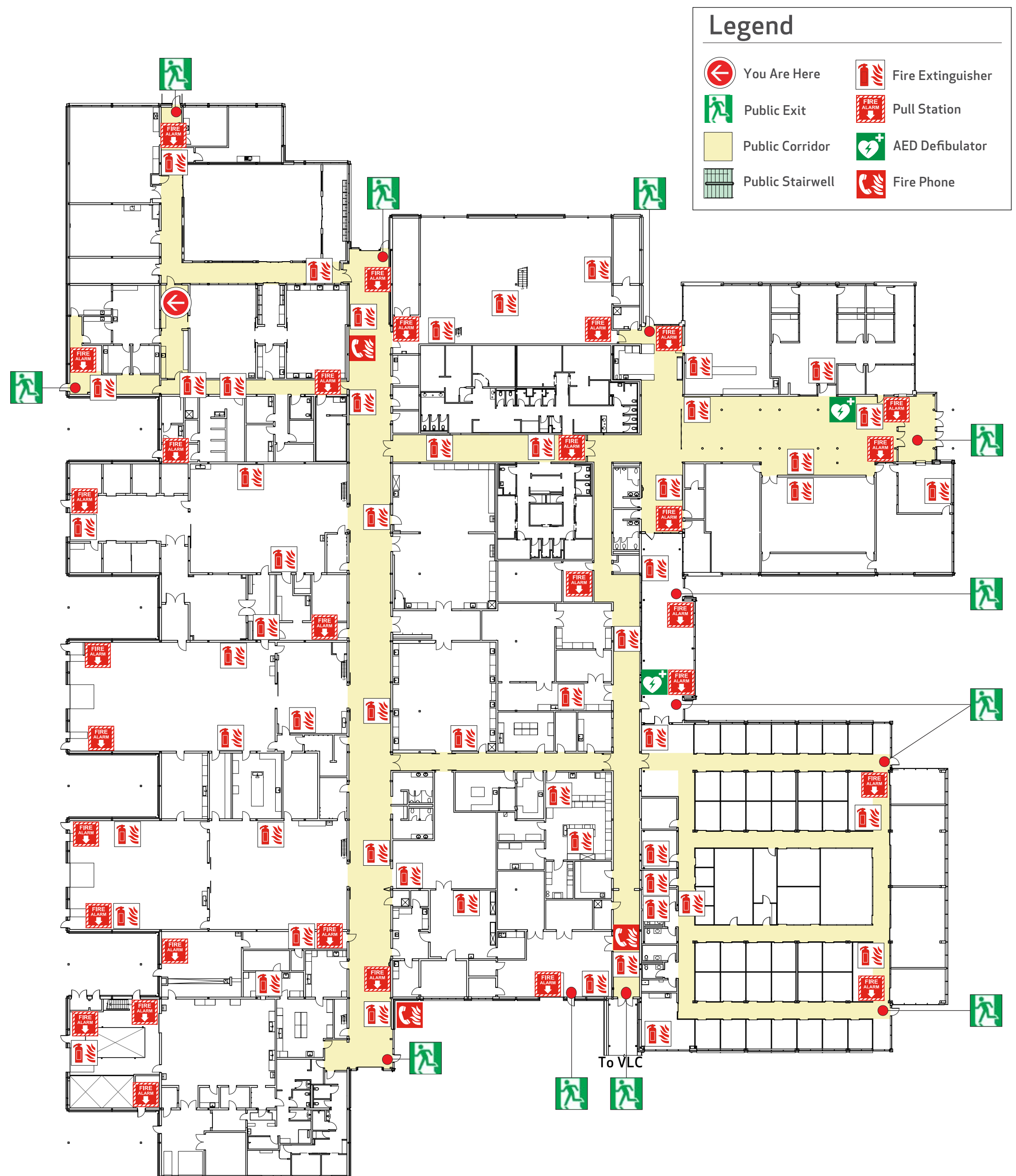
Assembly Point

Veterinary Learning Commons - VLC



Created September 2025

Emergency Evacuation Map Clinical Skills Building Level 1

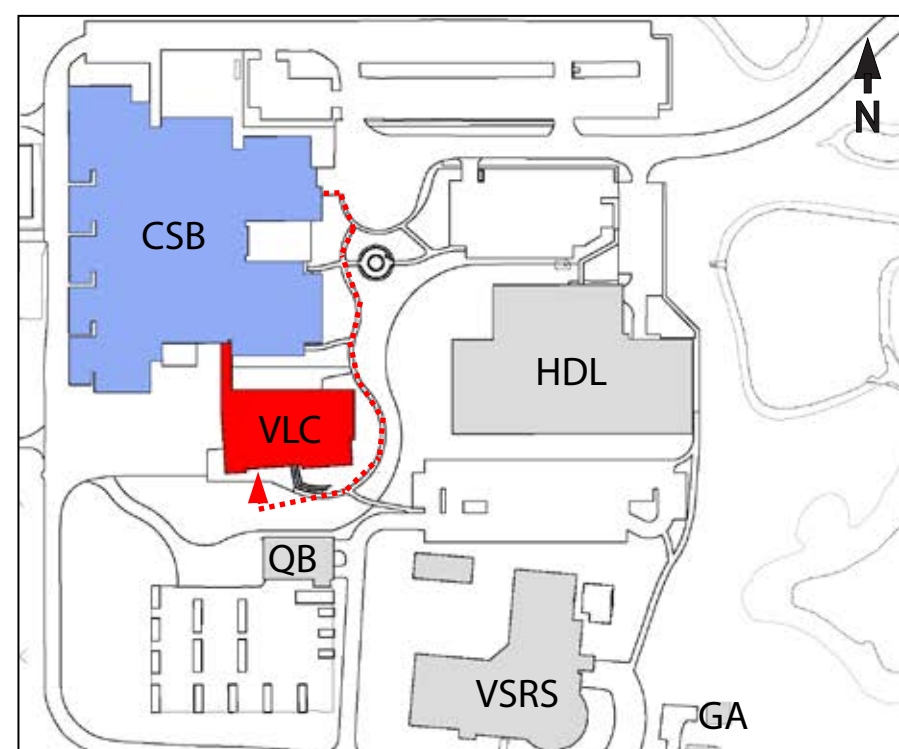


Emergency Evacuation Procedures

- Activate the **NEAREST FIRE ALARM PULL STATION**, located along exit path.
- Take coat and keys if immediately available.
- Evacuate building through the nearest exit. Use stairs - **DO NOT USE ELEVATORS**.
- Close all doors along your exit route.
- If directed by wardens, follow their instructions.
- Move away from the building and proceed to the Assembly Point.
- If you have information regarding the emergency call **Campus Security** at **403-220-5333** from a safe location.

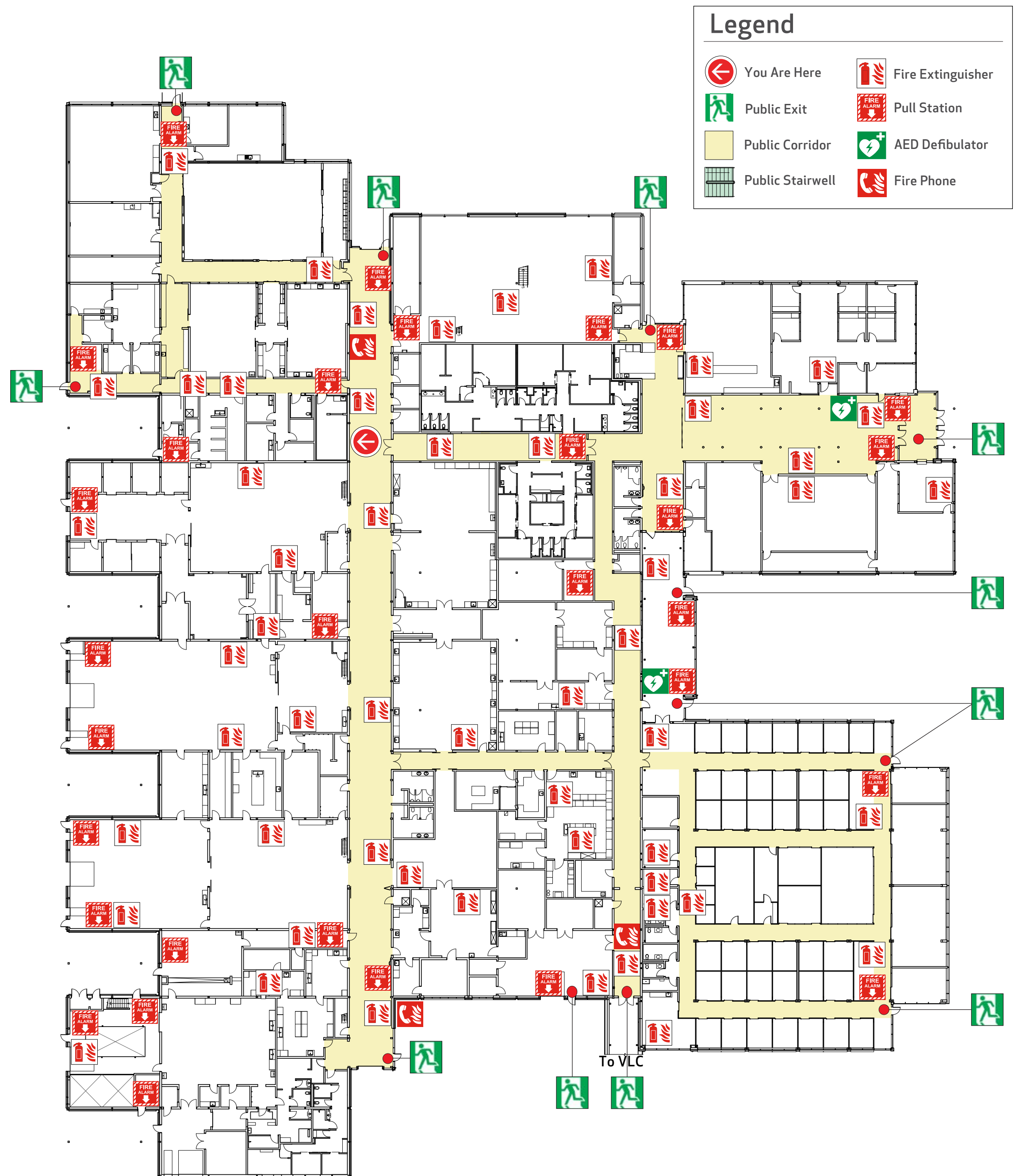
Assembly Point

Veterinary Learning Commons - VLC



Created September 2025

Emergency Evacuation Map Clinical Skills Building Level 1

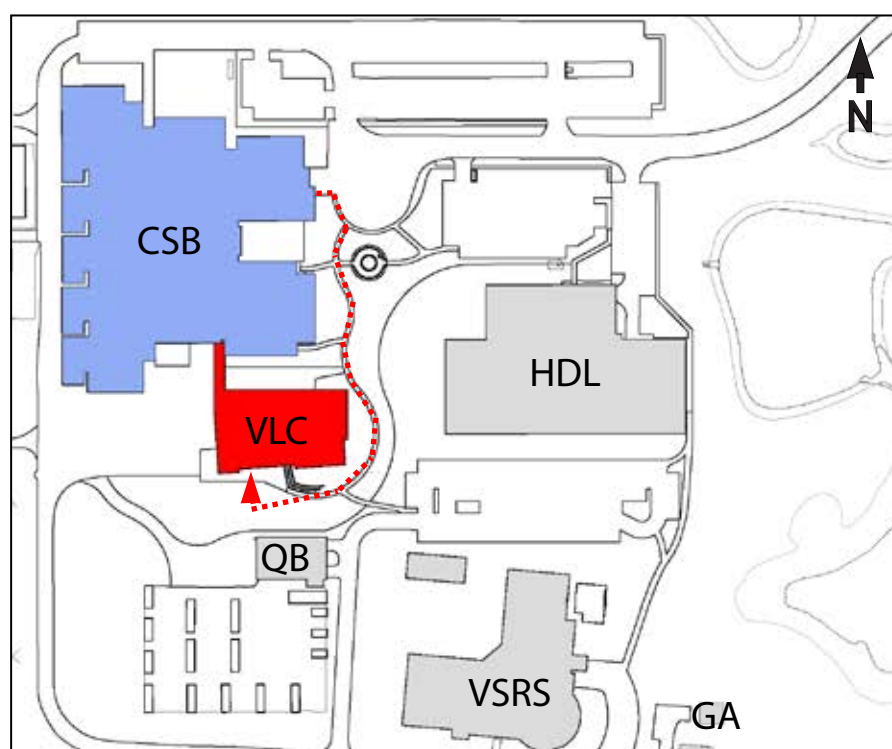


Emergency Evacuation Procedures

- Activate the **NEAREST FIRE ALARM PULL STATION**, located along exit path.
- Take coat and keys if immediately available.
- Evacuate building through the nearest exit. Use stairs - **DO NOT USE ELEVATORS**.
- Close all doors along your exit route.
- If directed by wardens, follow their instructions.
- Move away from the building and proceed to the Assembly Point.
- If you have information regarding the emergency call **Campus Security** at **403-220-5333** from a safe location.

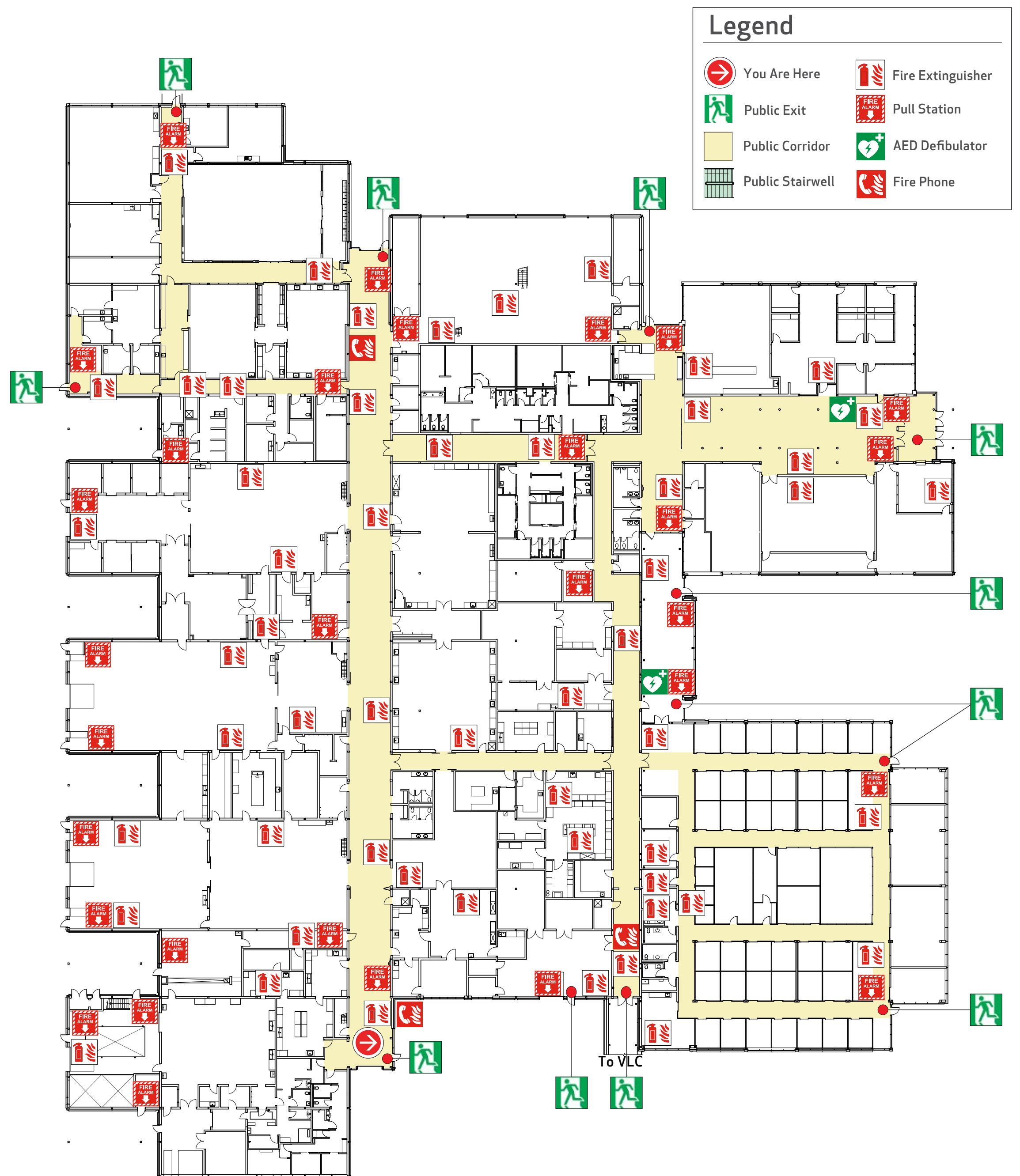
Assembly Point

Veterinary Learning Commons - VLC



Created September 2025

Emergency Evacuation Map Clinical Skills Building Level 1

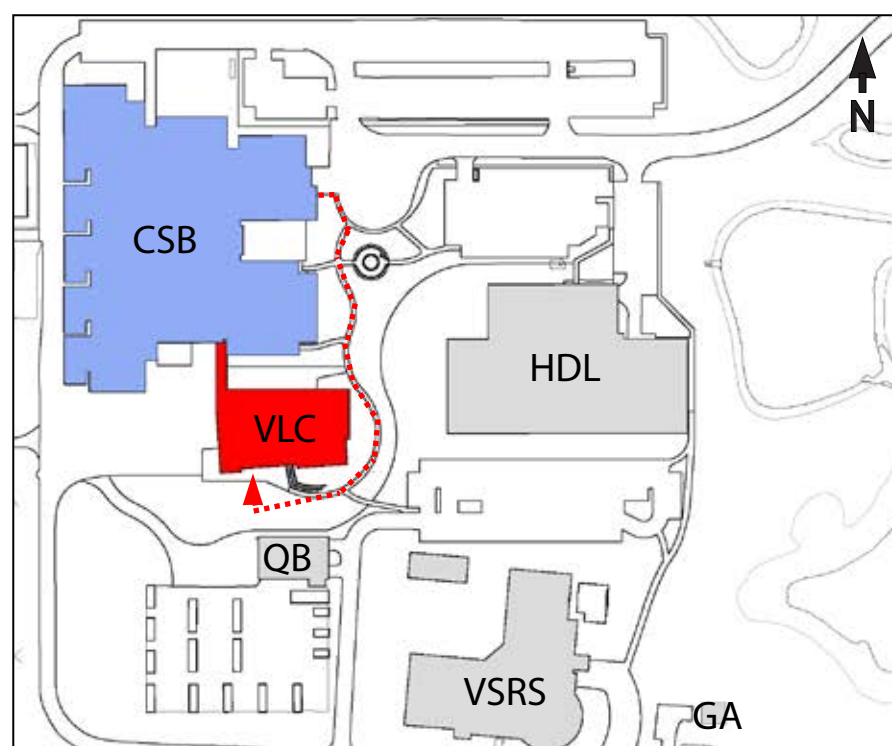


Emergency Evacuation Procedures

- Activate the **NEAREST FIRE ALARM PULL STATION**, located along exit path.
- Take coat and keys if immediately available.
- Evacuate building through the nearest exit. Use stairs - **DO NOT USE ELEVATORS**.
- Close all doors along your exit route.
- If directed by wardens, follow their instructions.
- Move away from the building and proceed to the Assembly Point.
- If you have information regarding the emergency call **Campus Security** at **403-220-5333** from a safe location.

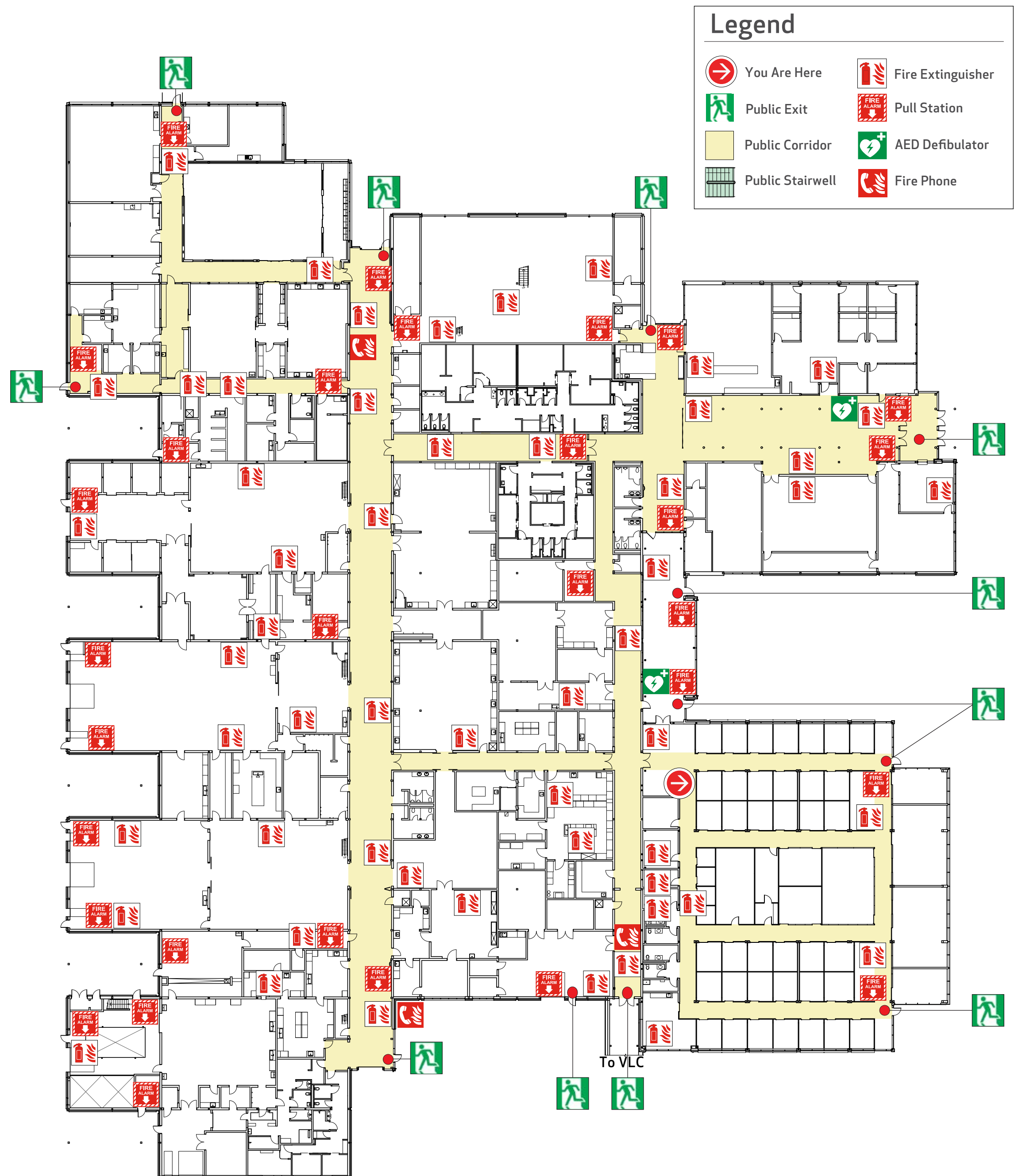
Assembly Point

Veterinary Learning Commons - VLC



Created September 2025

Emergency Evacuation Map Clinical Skills Building Level 1

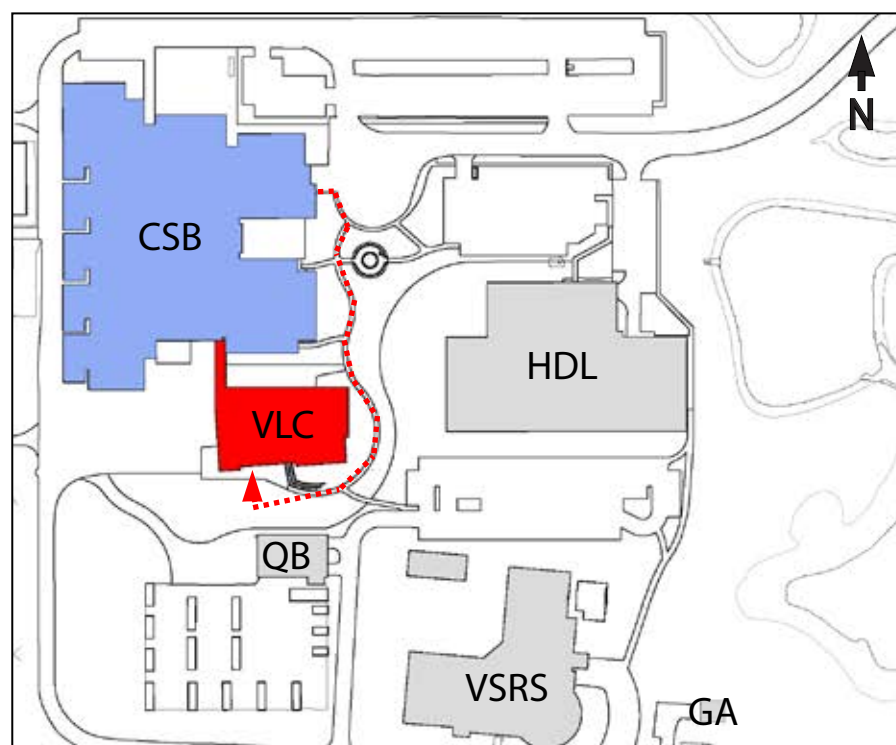


Emergency Evacuation Procedures

- Activate the **NEAREST FIRE ALARM PULL STATION**, located along exit path.
- Take coat and keys if immediately available.
- Evacuate building through the nearest exit. Use stairs - **DO NOT USE ELEVATORS**.
- Close all doors along your exit route.
- If directed by wardens, follow their instructions.
- Move away from the building and proceed to the Assembly Point.
- If you have information regarding the emergency call **Campus Security** at **403-220-5333** from a safe location.

Assembly Point

Veterinary Learning Commons - VLC



Created September 2025

Emergency Evacuation Map Clinical Skills Building Level 1

