

Emergency Evacuation Procedures

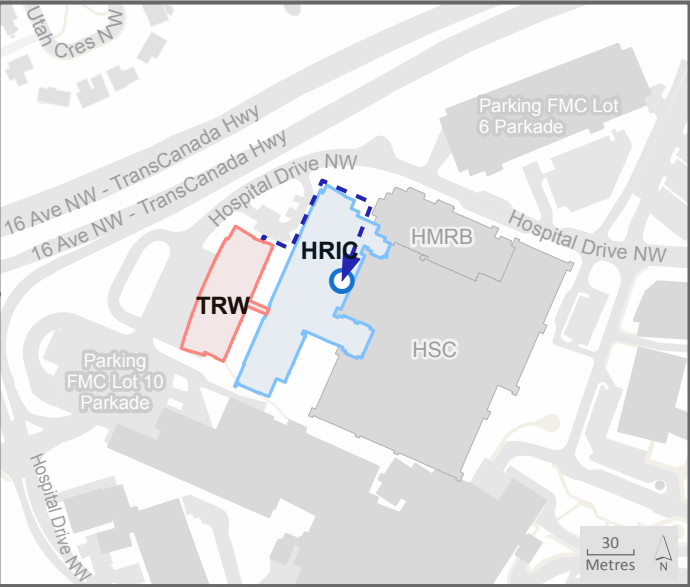
- A. Activate the **NEAREST FIRE ALARM PULL STATION**, located along exit path.
- B. Take coat and keys if immediately available.
- C. Evacuate building through the nearest exit. Use stairs - **DO NOT USE ELEVATORS**.
- D. Close all doors along your exit route.
- E. If directed by wardens, follow their instructions.
- F. Move away from the building and proceed to the Assembly Point.

If you have information regarding the emergency call **Campus Security** at **403-220-5333** from a safe location.

Legend

- AEDs
- Pull Stations
- Fire Extinguishers
- You Are Here

Assembly Point: HRIC – Atrium (GA00)



Emergency Evacuation Procedures

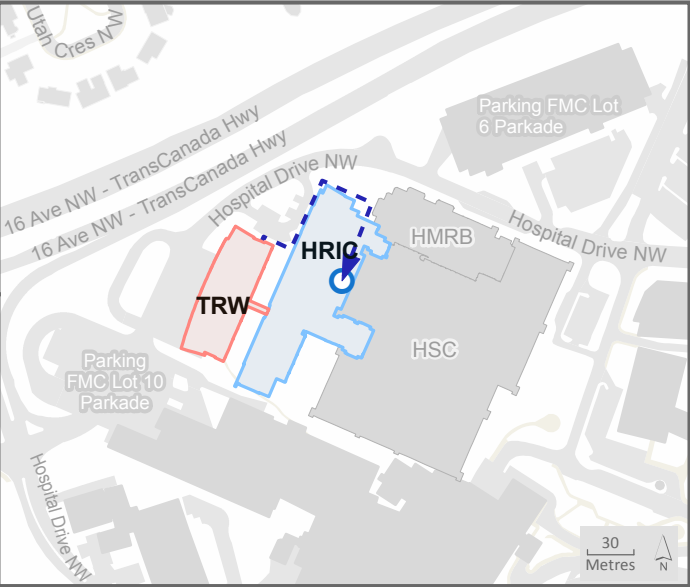
- A. Activate the **NEAREST FIRE ALARM PULL STATION**, located along exit path.
- B. Take coat and keys if immediately available.
- C. Evacuate building through the nearest exit. Use stairs - **DO NOT USE ELEVATORS**.
- D. Close all doors along your exit route.
- E. If directed by wardens, follow their instructions.
- F. Move away from the building and proceed to the Assembly Point.

If you have information regarding the emergency call **Campus Security** at **403-220-5333** from a safe location.

Legend

- AEDs
- Pull Stations
- Fire Extinguishers
- You Are Here

Assembly Point:
HRIC – Atrium (GA00)



Emergency Evacuation Procedures

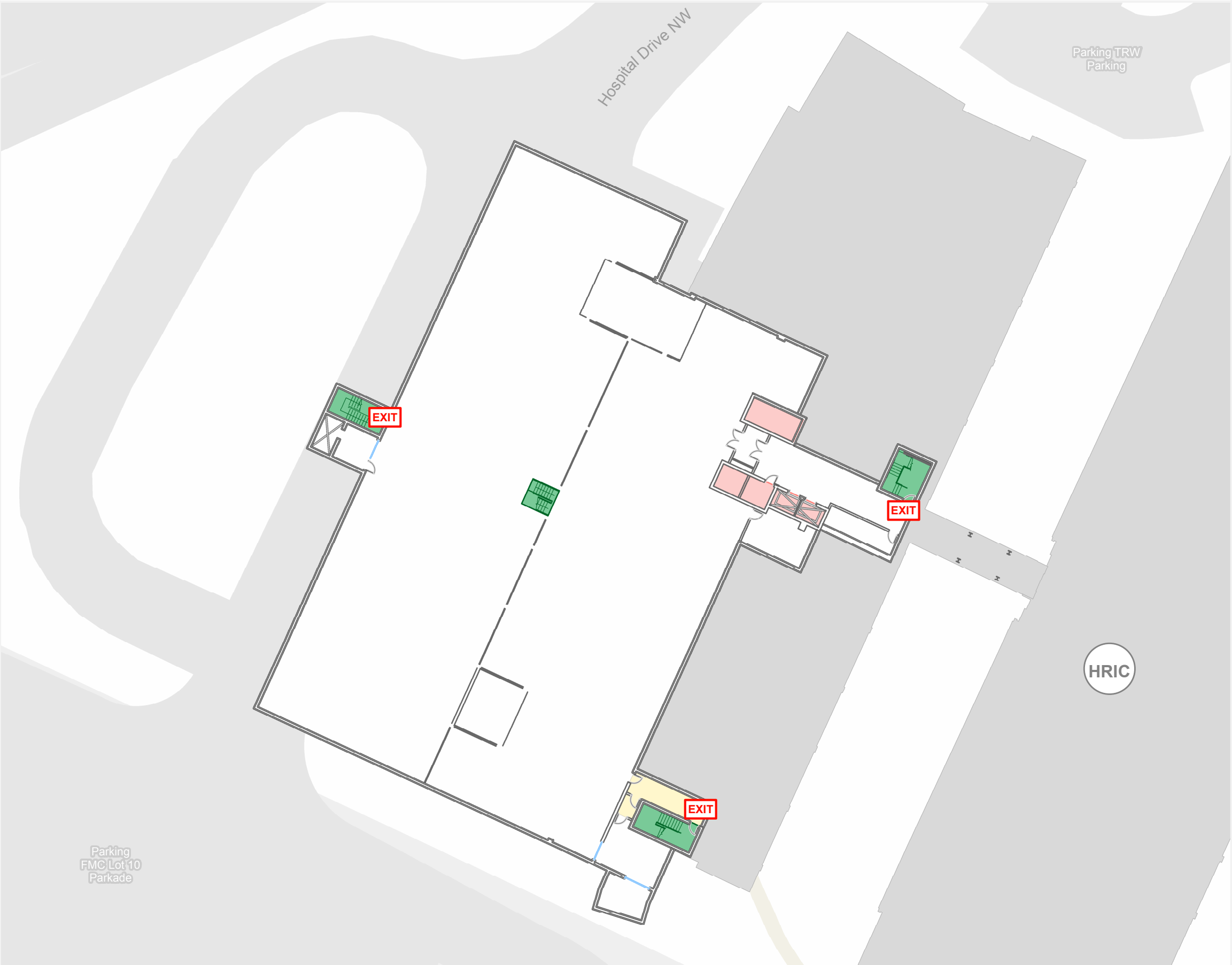
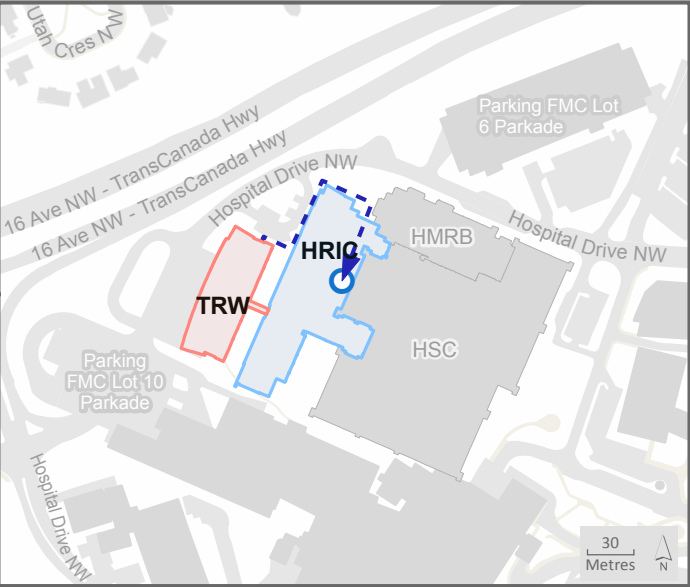
- A. Activate the **NEAREST FIRE ALARM PULL STATION**, located along exit path.
- B. Take coat and keys if immediately available.
- C. Evacuate building through the nearest exit. Use stairs - **DO NOT USE ELEVATORS**.
- D. Close all doors along your exit route.
- E. If directed by wardens, follow their instructions.
- F. Move away from the building and proceed to the Assembly Point.

If you have information regarding the emergency call **Campus Security** at **403-220-5333** from a safe location.

Legend

- AEDs
- Pull Stations
- Fire Extinguishers
- You Are Here

Assembly Point: HRIC – Atrium (GA00)



Emergency Evacuation Procedures

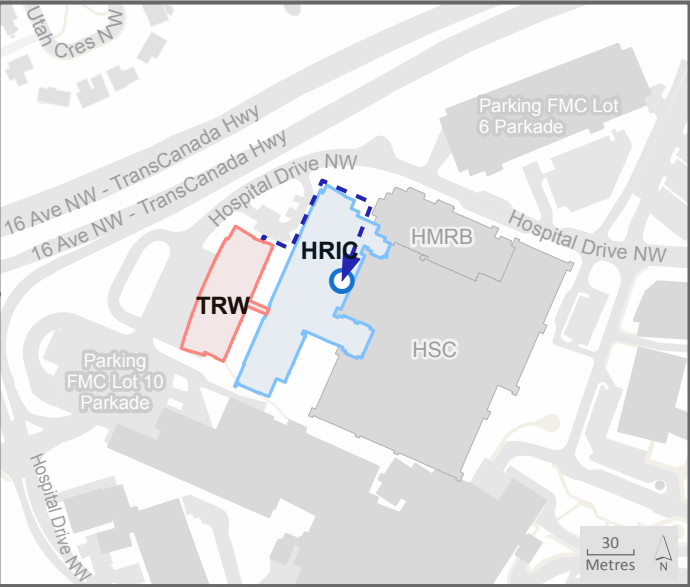
- A. Activate the **NEAREST FIRE ALARM PULL STATION**, located along exit path.
- B. Take coat and keys if immediately available.
- C. Evacuate building through the nearest exit. Use stairs - **DO NOT USE ELEVATORS**.
- D. Close all doors along your exit route.
- E. If directed by wardens, follow their instructions.
- F. Move away from the building and proceed to the Assembly Point.

If you have information regarding the emergency call **Campus Security** at **403-220-5333** from a safe location.

Legend

- AEDs
- Pull Stations
- Fire Extinguishers
- You Are Here

Assembly Point:
HRIC – Atrium (GA00)



Emergency Evacuation Procedures

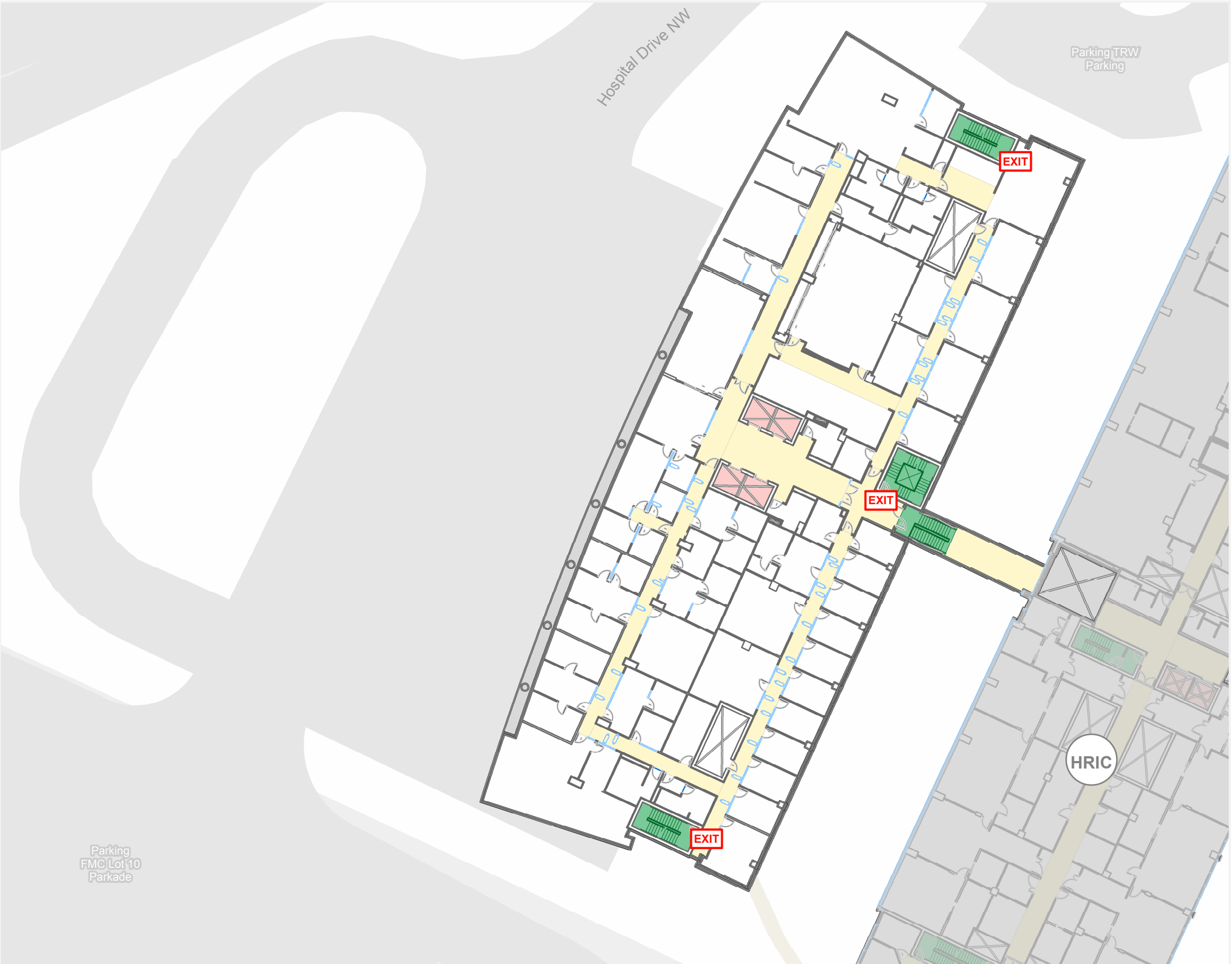
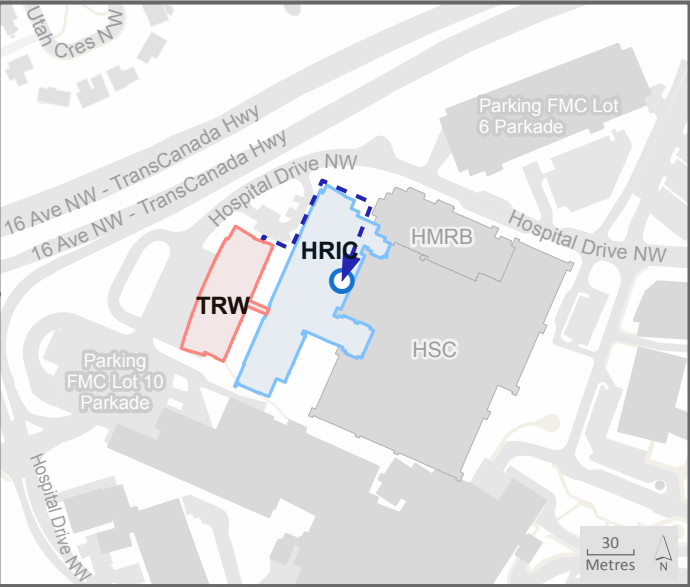
- A. Activate the **NEAREST FIRE ALARM PULL STATION**, located along exit path.
- B. Take coat and keys if immediately available.
- C. Evacuate building through the nearest exit. Use stairs - **DO NOT USE ELEVATORS**.
- D. Close all doors along your exit route.
- E. If directed by wardens, follow their instructions.
- F. Move away from the building and proceed to the Assembly Point.

If you have information regarding the emergency call **Campus Security** at **403-220-5333** from a safe location.

Legend

- AEDs
- Pull Stations
- Fire Extinguishers
- You Are Here

Assembly Point: HRIC – Atrium (GA00)



Emergency Evacuation Procedures

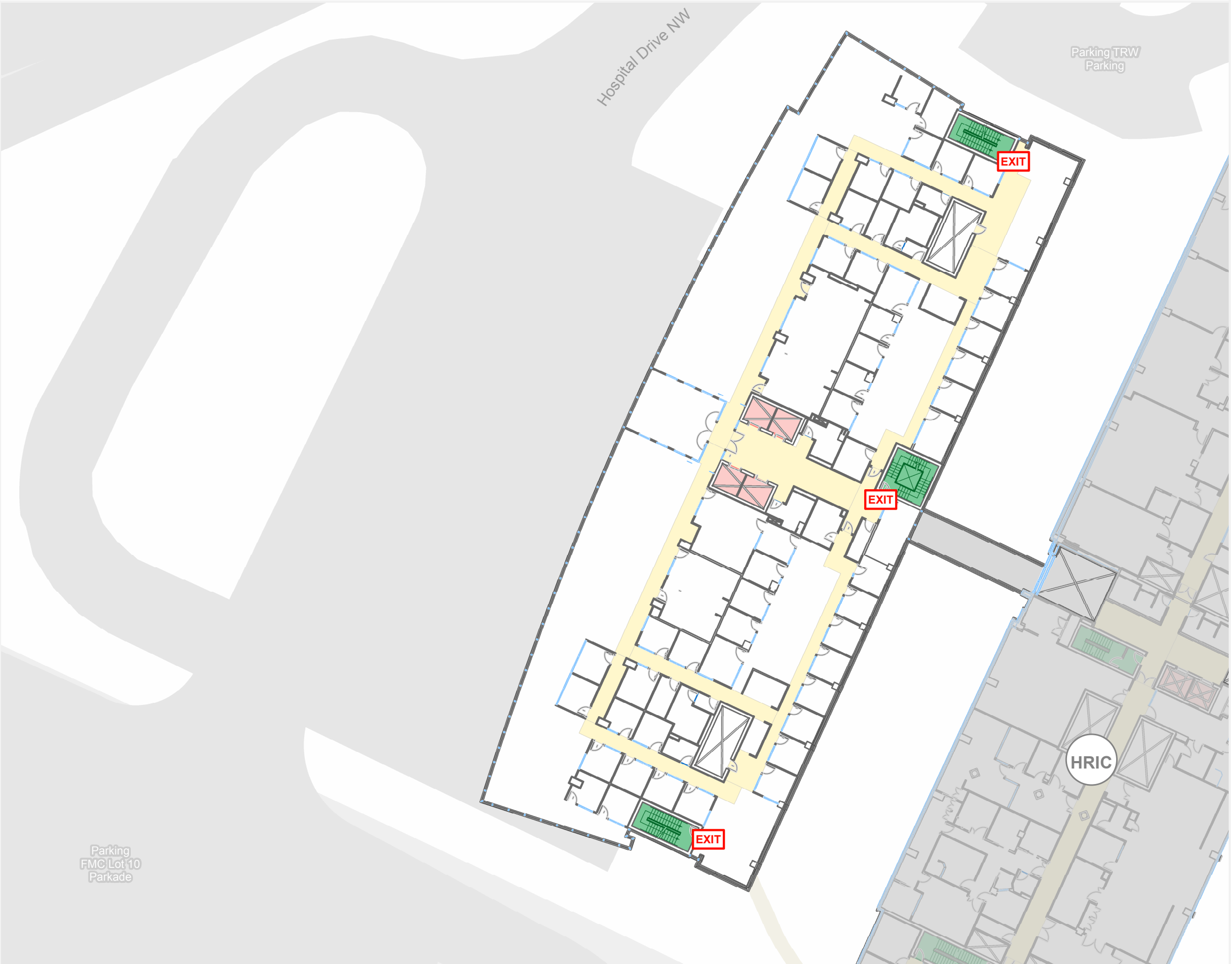
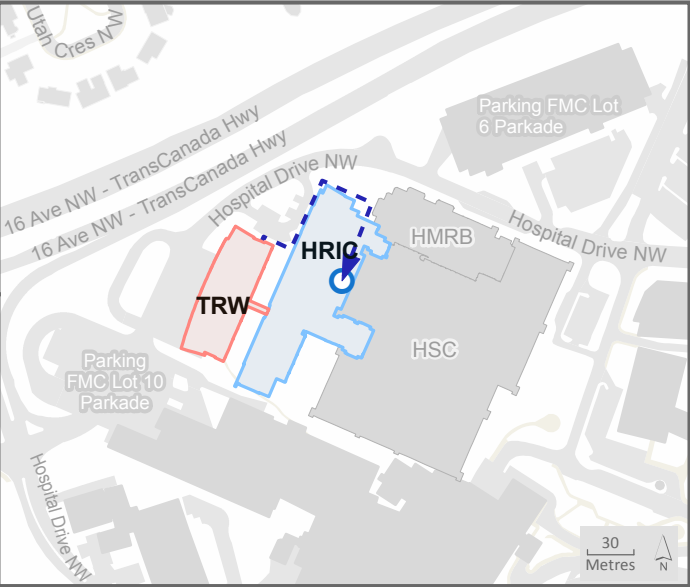
- A. Activate the **NEAREST FIRE ALARM PULL STATION**, located along exit path.
- B. Take coat and keys if immediately available.
- C. Evacuate building through the nearest exit. Use stairs - **DO NOT USE ELEVATORS**.
- D. Close all doors along your exit route.
- E. If directed by wardens, follow their instructions.
- F. Move away from the building and proceed to the Assembly Point.

If you have information regarding the emergency call **Campus Security** at **403-220-5333** from a safe location.

Legend

- AEDs
- Pull Stations
- Fire Extinguishers
- You Are Here

Assembly Point: HRIC – Atrium (GA00)



Emergency Evacuation Procedures

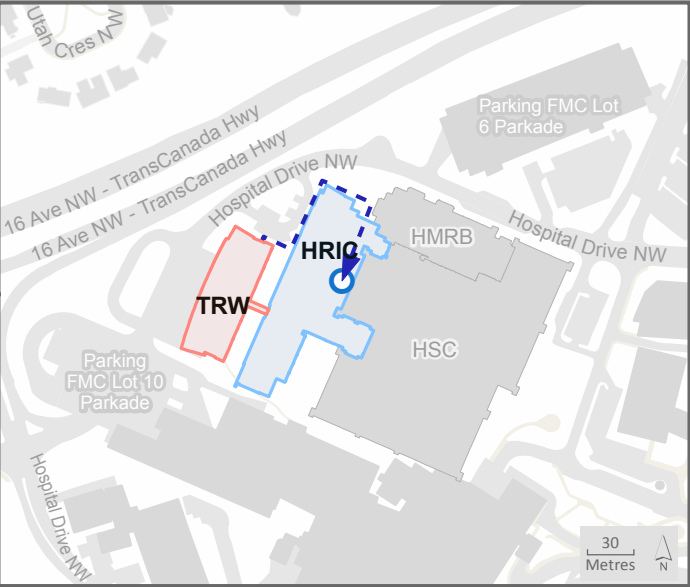
- A. Activate the **NEAREST FIRE ALARM PULL STATION**, located along exit path.
- B. Take coat and keys if immediately available.
- C. Evacuate building through the nearest exit. Use stairs - **DO NOT USE ELEVATORS**.
- D. Close all doors along your exit route.
- E. If directed by wardens, follow their instructions.
- F. Move away from the building and proceed to the Assembly Point.

If you have information regarding the emergency call **Campus Security** at **403-220-5333** from a safe location.

Legend

- AEDs
- Pull Stations
- Fire Extinguishers
- You Are Here

Assembly Point: HRIC – Atrium (GA00)



Emergency Evacuation Procedures

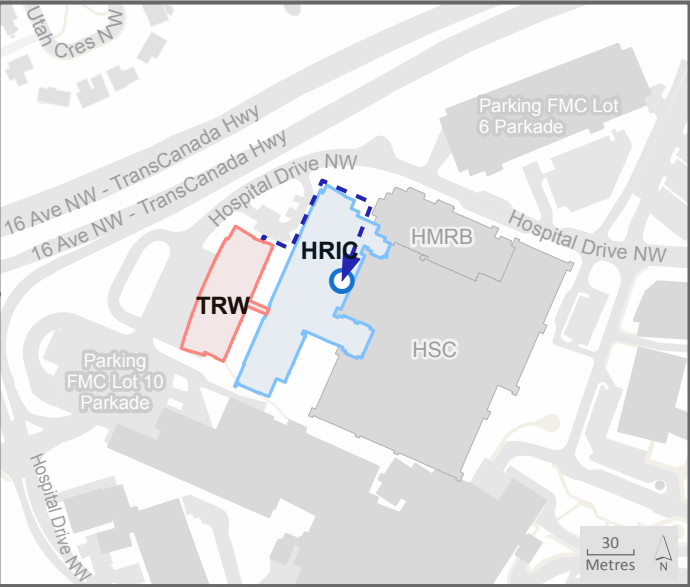
- A. Activate the **NEAREST FIRE ALARM PULL STATION**, located along exit path.
- B. Take coat and keys if immediately available.
- C. Evacuate building through the nearest exit. Use stairs - **DO NOT USE ELEVATORS**.
- D. Close all doors along your exit route.
- E. If directed by wardens, follow their instructions.
- F. Move away from the building and proceed to the Assembly Point.

If you have information regarding the emergency call **Campus Security** at **403-220-5333** from a safe location.

Legend

- AEDs
- Pull Stations
- Fire Extinguishers
- You Are Here

Assembly Point: HRIC – Atrium (GA00)



Emergency Evacuation Procedures

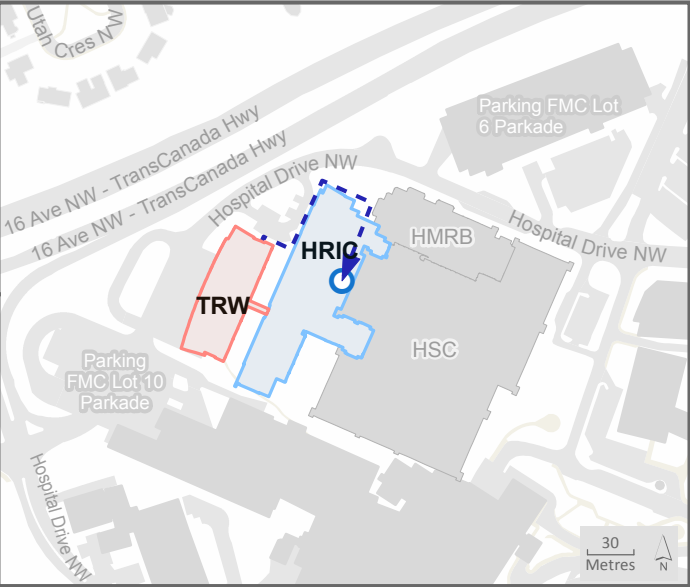
- A. Activate the **NEAREST FIRE ALARM PULL STATION**, located along exit path.
- B. Take coat and keys if immediately available.
- C. Evacuate building through the nearest exit. Use stairs - **DO NOT USE ELEVATORS**.
- D. Close all doors along your exit route.
- E. If directed by wardens, follow their instructions.
- F. Move away from the building and proceed to the Assembly Point.

If you have information regarding the emergency call **Campus Security** at **403-220-5333** from a safe location.

Legend

- AEDs
- Pull Stations
- Fire Extinguishers
- You Are Here

Assembly Point: HRIC – Atrium (GA00)



Emergency Evacuation Procedures

- A. Activate the **NEAREST FIRE ALARM PULL STATION**, located along exit path.
- B. Take coat and keys if immediately available.
- C. Evacuate building through the nearest exit. Use stairs - **DO NOT USE ELEVATORS**.
- D. Close all doors along your exit route.
- E. If directed by wardens, follow their instructions.
- F. Move away from the building and proceed to the Assembly Point.

If you have information regarding the emergency call **Campus Security** at **403-220-5333** from a safe location.

Legend

- AEDs
- Pull Stations
- Fire Extinguishers
- You Are Here

Assembly Point: HRIC – Atrium (GA00)

