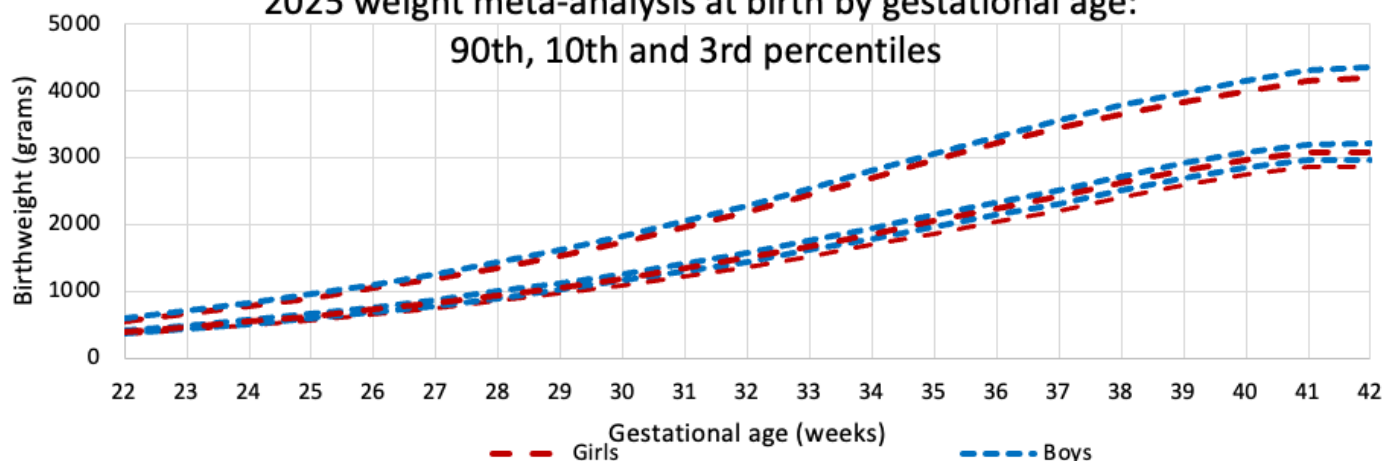


Fenton 2025 meta-analysis for size for gestational age (small, large and appropriate) assignment at birth

| Week | 3rd girls | 10th girls | 90th girls | 3rd boys | 10th boys | 90th boys |
|------|-----------|------------|------------|----------|-----------|-----------|
| 22 | 359 | 392 | 558 | 367 | 411 | 599 |
| 23 | 423 | 464 | 662 | 436 | 488 | 704 |
| 24 | 492 | 542 | 774 | 511 | 571 | 820 |
| 25 | 570 | 631 | 902 | 594 | 665 | 953 |
| 26 | 658 | 729 | 1044 | 684 | 767 | 1102 |
| 27 | 753 | 834 | 1197 | 785 | 877 | 1263 |
| 28 | 853 | 944 | 1359 | 899 | 996 | 1436 |
| 29 | 964 | 1062 | 1536 | 1025 | 1125 | 1623 |
| 30 | 1086 | 1194 | 1735 | 1159 | 1264 | 1826 |
| 31 | 1220 | 1340 | 1958 | 1300 | 1413 | 2046 |
| 32 | 1366 | 1500 | 2199 | 1450 | 1577 | 2282 |
| 33 | 1524 | 1673 | 2447 | 1616 | 1757 | 2535 |
| 34 | 1691 | 1855 | 2699 | 1792 | 1949 | 2796 |
| 35 | 1863 | 2043 | 2954 | 1971 | 2143 | 3057 |
| 36 | 2038 | 2231 | 3211 | 2149 | 2334 | 3310 |
| 37 | 2211 | 2418 | 3436 | 2297 | 2513 | 3550 |
| 38 | 2407 | 2618 | 3643 | 2500 | 2721 | 3773 |
| 39 | 2593 | 2804 | 3828 | 2691 | 2913 | 3970 |
| 40 | 2743 | 2957 | 3991 | 2842 | 3069 | 4144 |
| 41 | 2857 | 3077 | 4140 | 2960 | 3194 | 4299 |
| 42 | 2859 | 3087 | 4184 | 2970 | 3213 | 4353 |

2025 weight meta-analysis at birth by gestational age:
90th, 10th and 3rd percentiles



This work is licensed under the Creative Commons Attribution-NonCommercial-NoDerivatives 4.0 International License



To view a copy of the license, visit:

<https://creativecommons.org/licenses/by-nc-nd/4.0/>

<https://live-ucalgary.ucalgary.ca/resource/preterm-growth-chart>

Fenton TR, Elmrayed S, Alshaikh BN. Fenton third-generation growth charts of preterm infants without abnormal fetal growth

A systematic review and meta-analysis. **Paediatr Perinat Epidemiol.** 2025

Access: www.ncbi.nlm.nih.gov/pubmed/40534585

[www.doi: 10.1111/ppe.70035](https://www.doi.org/10.1111/ppe.70035)