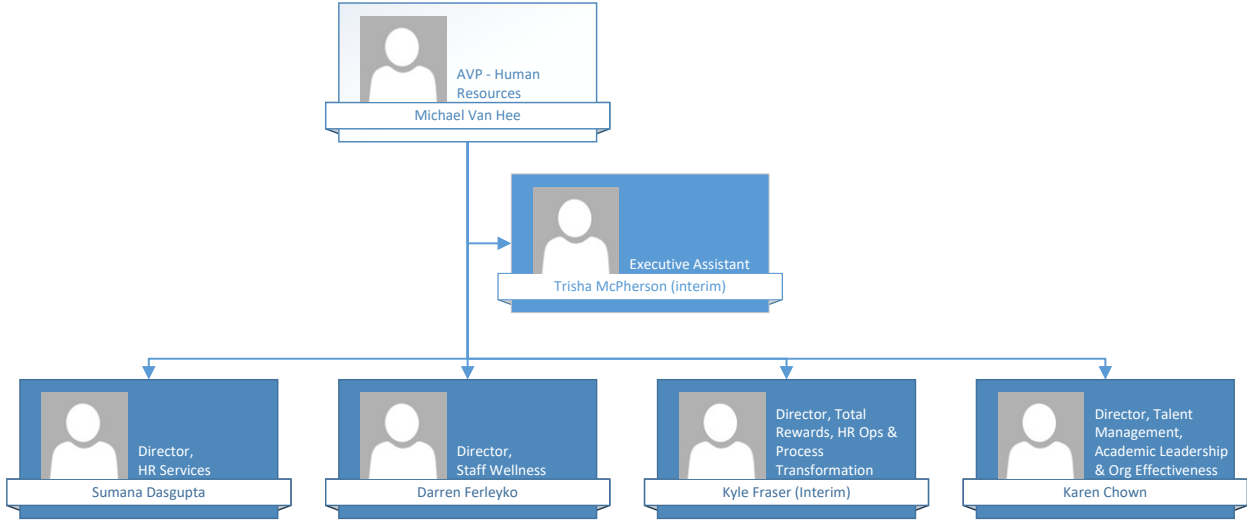
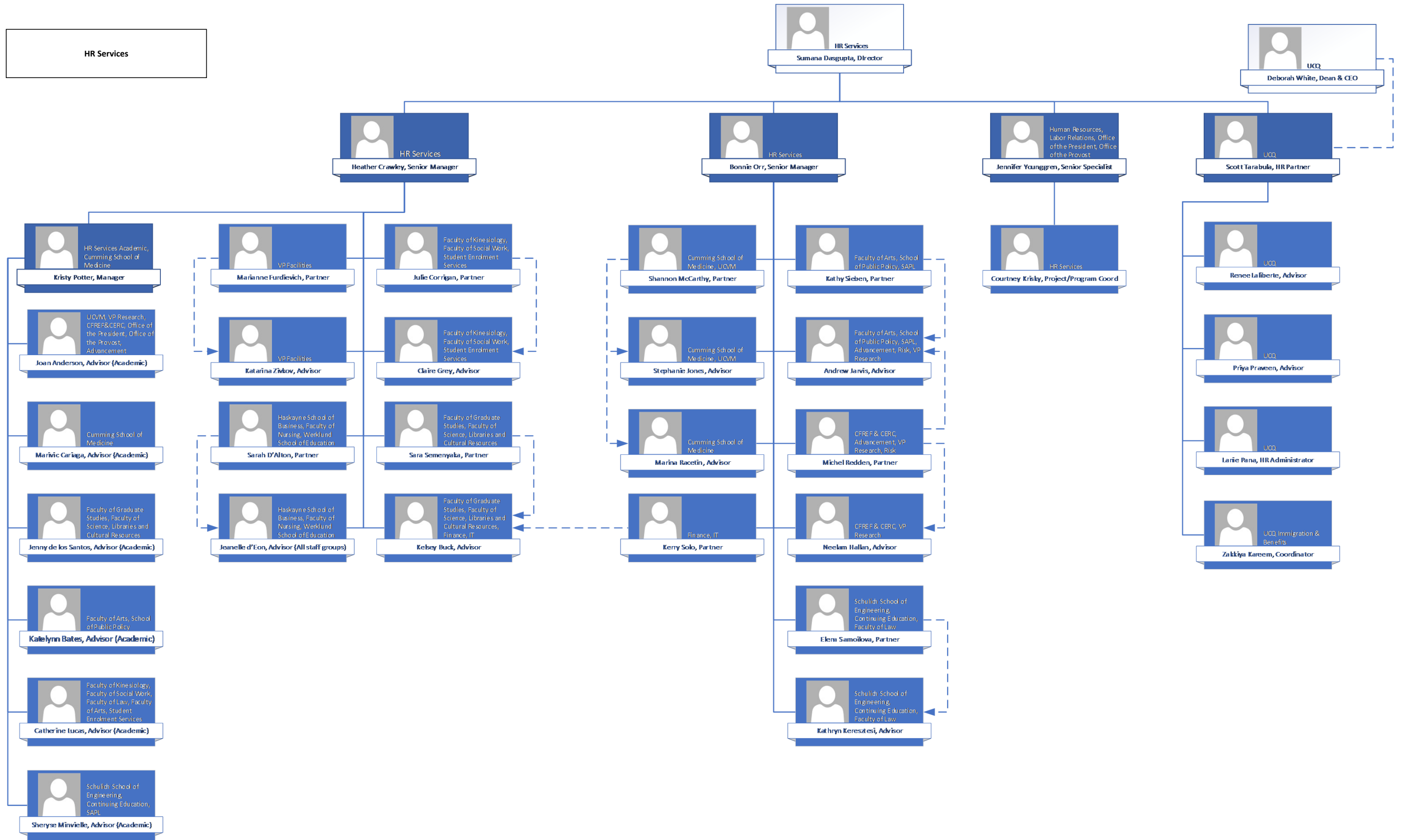


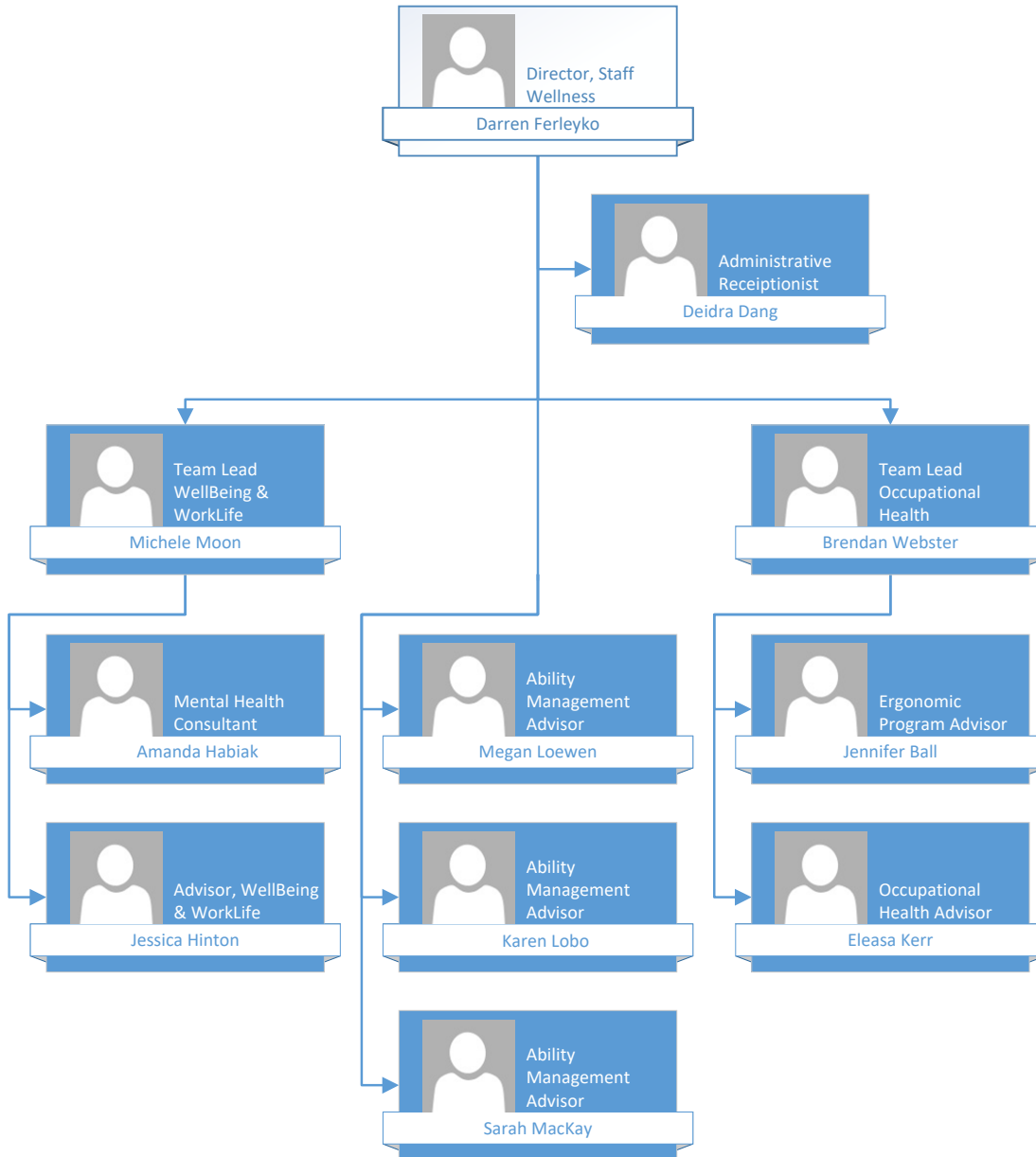
Office of the Associate Vice-President (Human Resources)



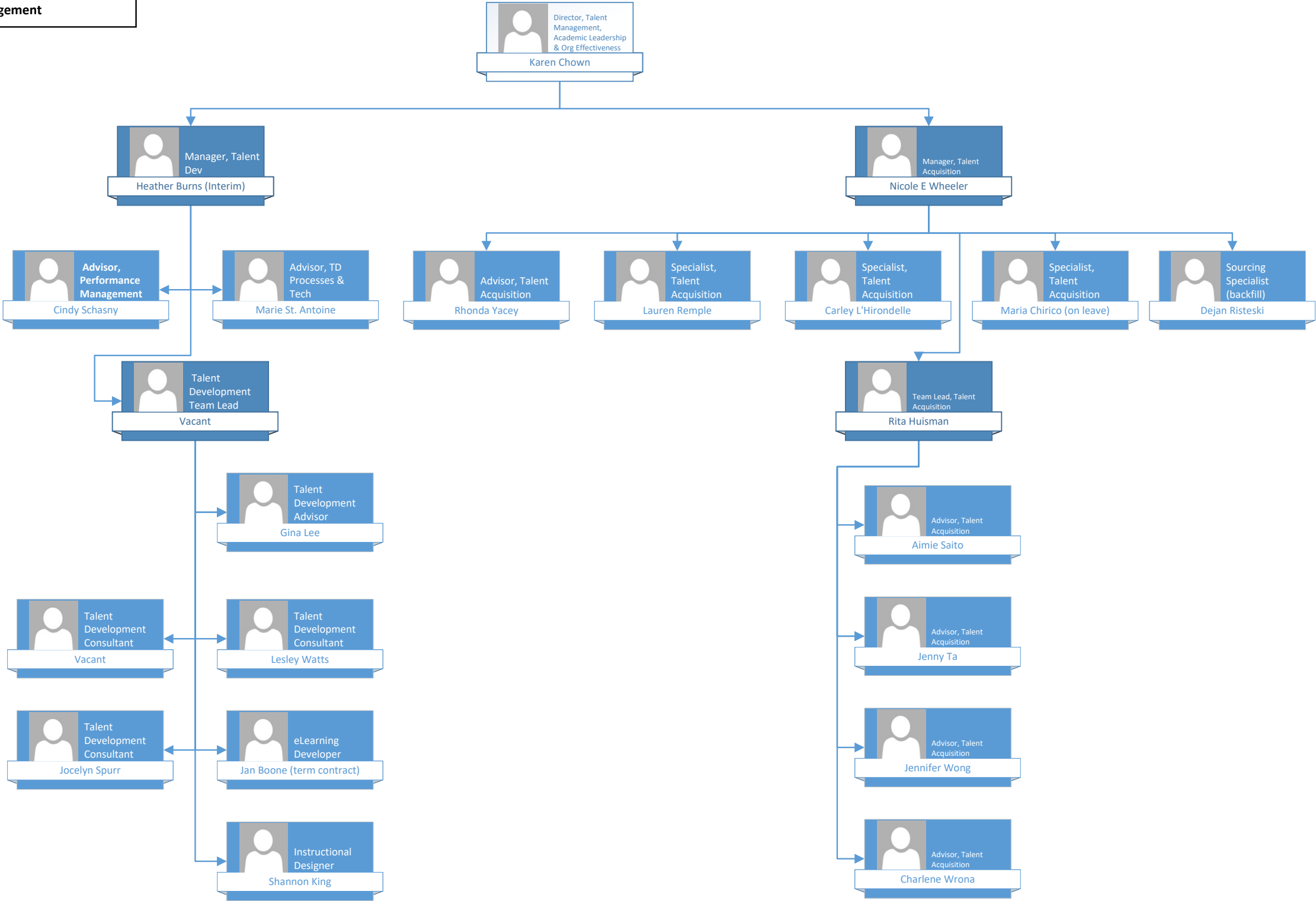
HR Services



Staff Wellness



Talent Management



**Total Rewards
HR Ops
Process Transformation**

Director, Total Rewards, HR Ops & Process Transformation
Kyle Fraser (Interim)

Manager, HR Ops
Vacant

Manager, Compensation & Recognition
Jodie Jeworski

Sr. Specialist, Group Benefits
Shelley Malanchuk

Manager, Process Transformation
Louise Percy

Specialist, HR Ops
Kelsey Buck

Team Lead, HR Data Integrity
Rebecca Van Ginkel

Team Lead, HR Data Integrity
Karen Jean Goodwin

Specialist, Compensation
Reinald Nava

Analyst, Total Rewards (Compensation)
Claire Grey

Analyst, Total Rewards (Group Benefits)
Wendy Tkaczuk

Specialist, Systems & Reporting
Brad Hurton

Sr Anly, Systems & Reporting
Jennifer McCloy

HR Administrator - Workforce
Shaista Madhany (on leave)

HR Administrator - Workforce
Judy Schmunk

File Clerk
Susmita Barau (PT)

Analyst, Total Rewards (Compensation)
Holly McCartney (Backfill)

Analyst, Total Rewards (Compensation)
Vacant

Advisor, Total Rewards (Retirement Program)
Grace M Li

Sr Anly, Systems & Reporting
Joanne Nikkel

Sr Anly, Systems & Reporting
Ubong Henshaw

HR Administrator - Workforce
Vacant (backfill)

HR Administrator - Workforce
Tina Waddell

HR Administrator - Workforce
Allison Parsons (on leave)

Advisor, Total Rewards (Compensation)
Alissa Penner (on leave)

Analyst, Total Rewards (Recognition)
Iryna Leonova

Analyst, Systems and Reporting
Rosa Moon (on leave)

Analyst, Systems and Reporting
Vacant (Backfill)

HR Administrator - Workforce
Lori Croal Doupe (backfill BM)

Analyst, Total Rewards (Compensation)
Marivic Cariaga

HR Administrator - Workforce
Amanda Chan (backfill AP)

HR Administrator - Workforce
Amy Quan

HR Administrator - Workforce
Paula Harrison

HR Administrator - Workforce
Bethany Minshull (on leave)

HR Administrator - Workforce
Heather Barton-Browne

Jr Anly, Systems & Reporting
Crystal Ma

Jr Analyst, Systems and Reporting
Kathi Forre

**FOR REFERENCE
LABOUR RELATIONS**

