



February 16<sup>th</sup>, 2012

# Trades & Technology Complex

Canadian Society of Civil Engineering Presentation



# Agenda

- SAIT Past
- Guiding Principles
- SAIT Present
- SAIT Future
  - Trades & Technology Complex

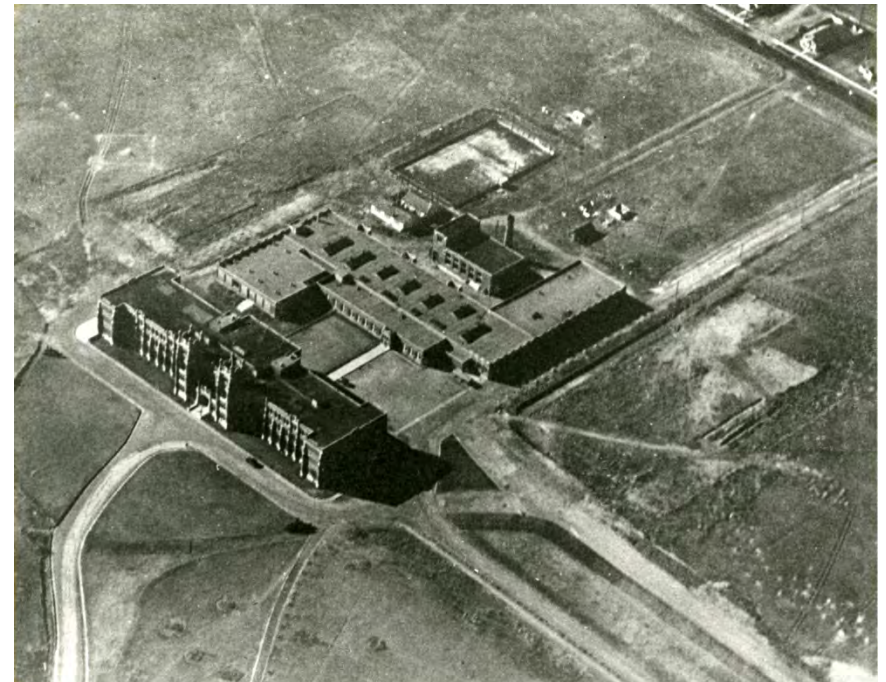
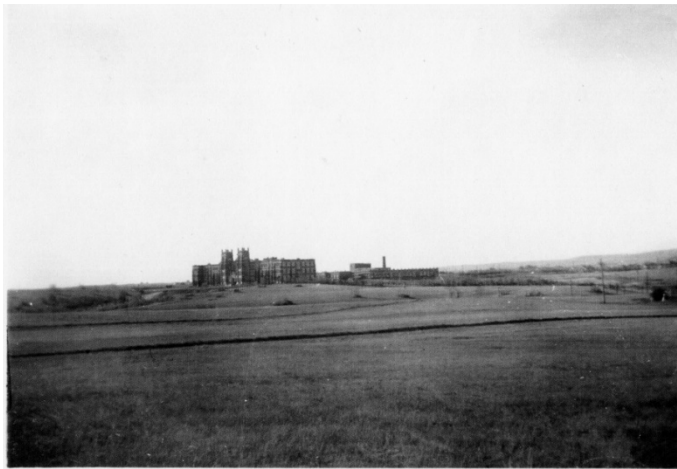


**SAIT POLYTECHNIC SITE**  
Calgary, Alberta

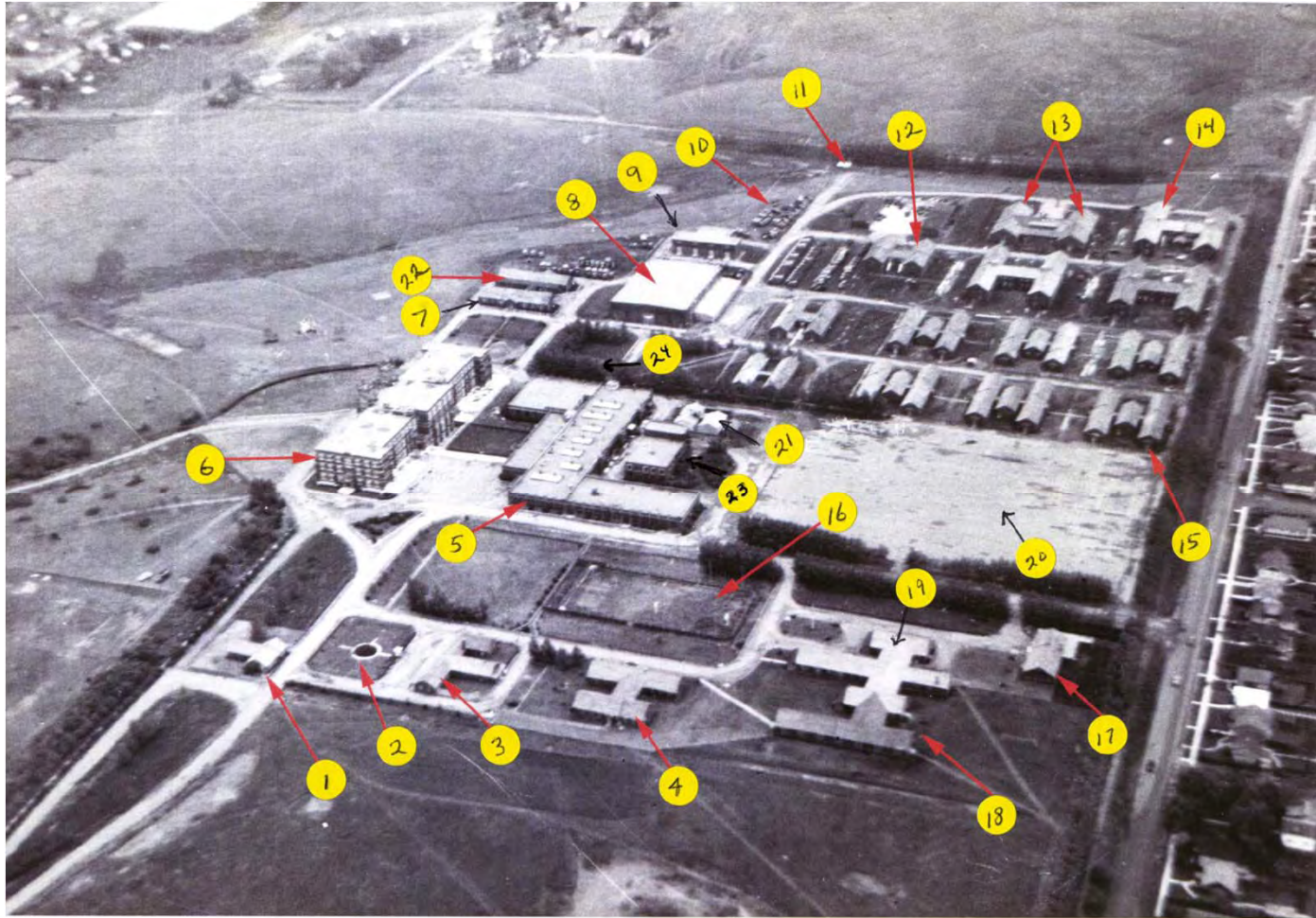
-  Inner City Campus (96 acres)
-  Arterial Roads (Transit Connections)
-  Northwest LRT Line & Stations
-  Campus Parking
-  Campus Ring Road

## CITY CONTEXT

# SAIT Past







AERIAL VIEW OF PITA/SAIT CAMPUS - SPRING 1947







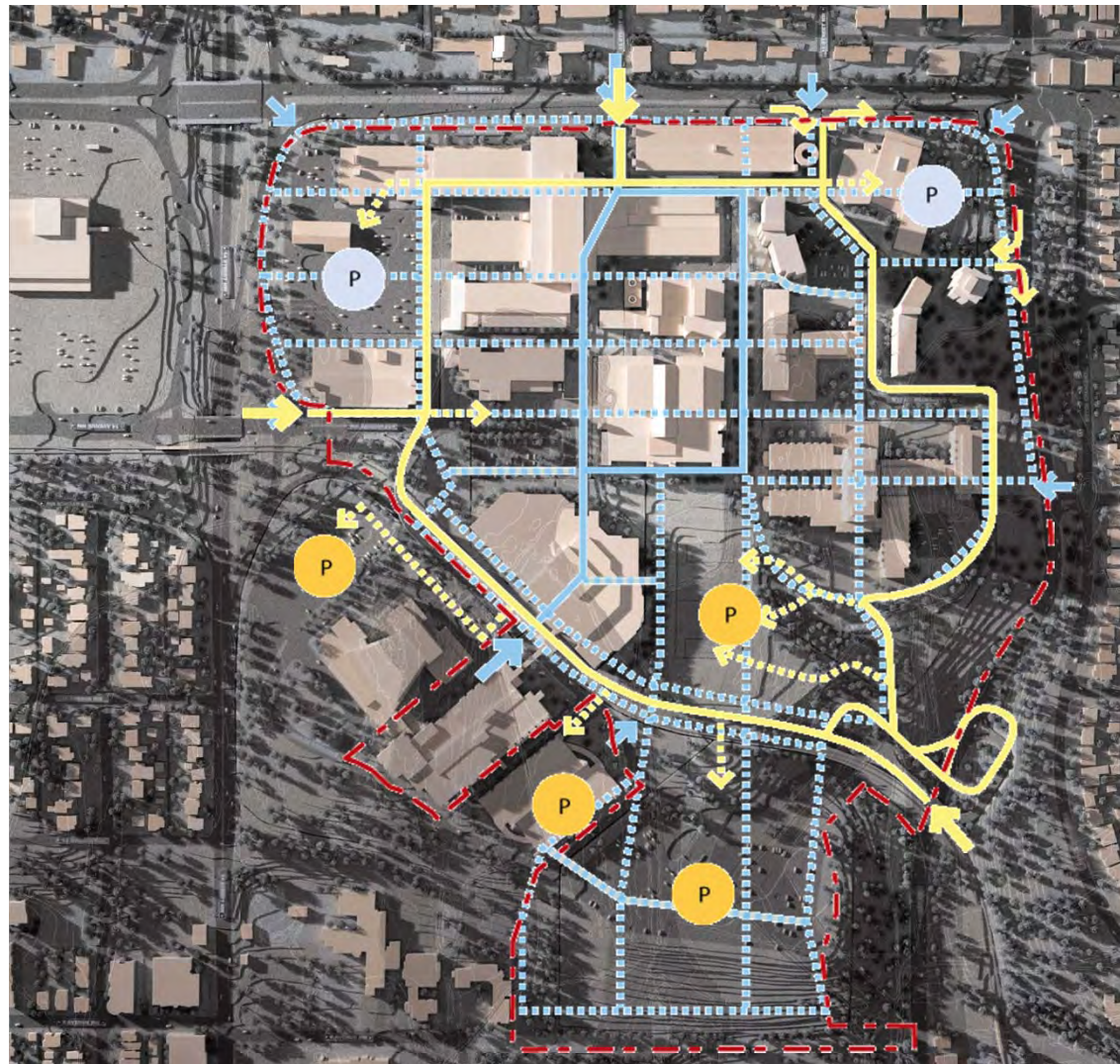








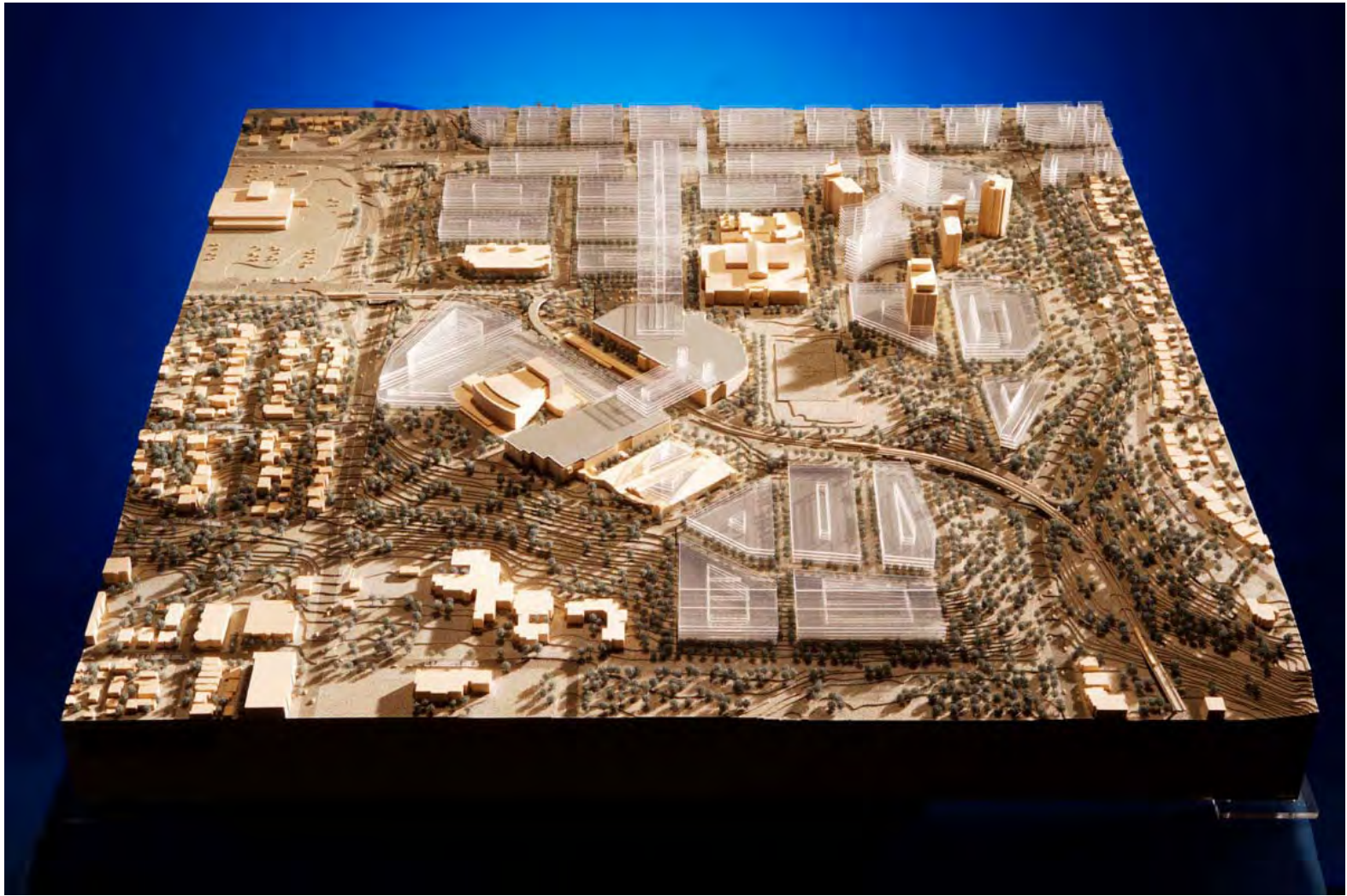
# Guiding Principles













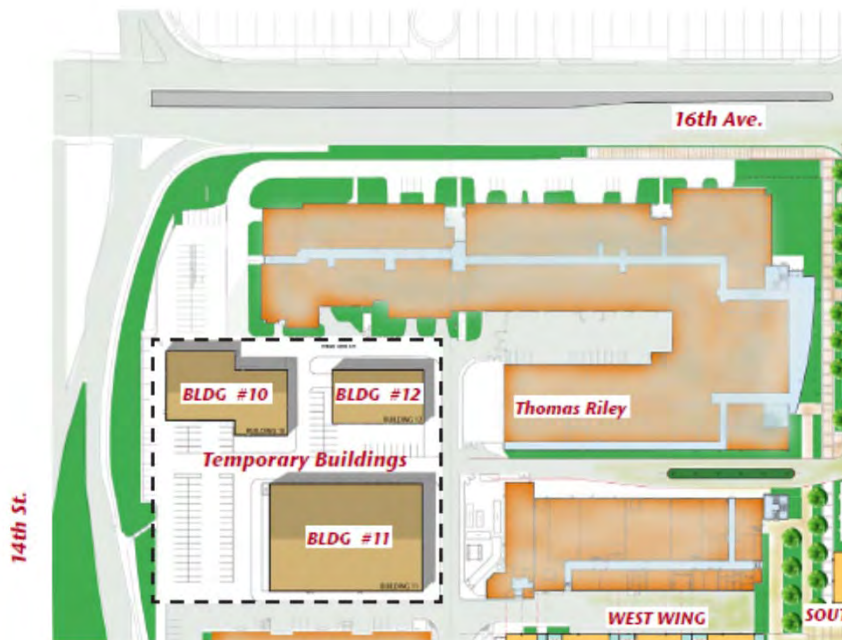


# SAIT Present









# SAIT Future



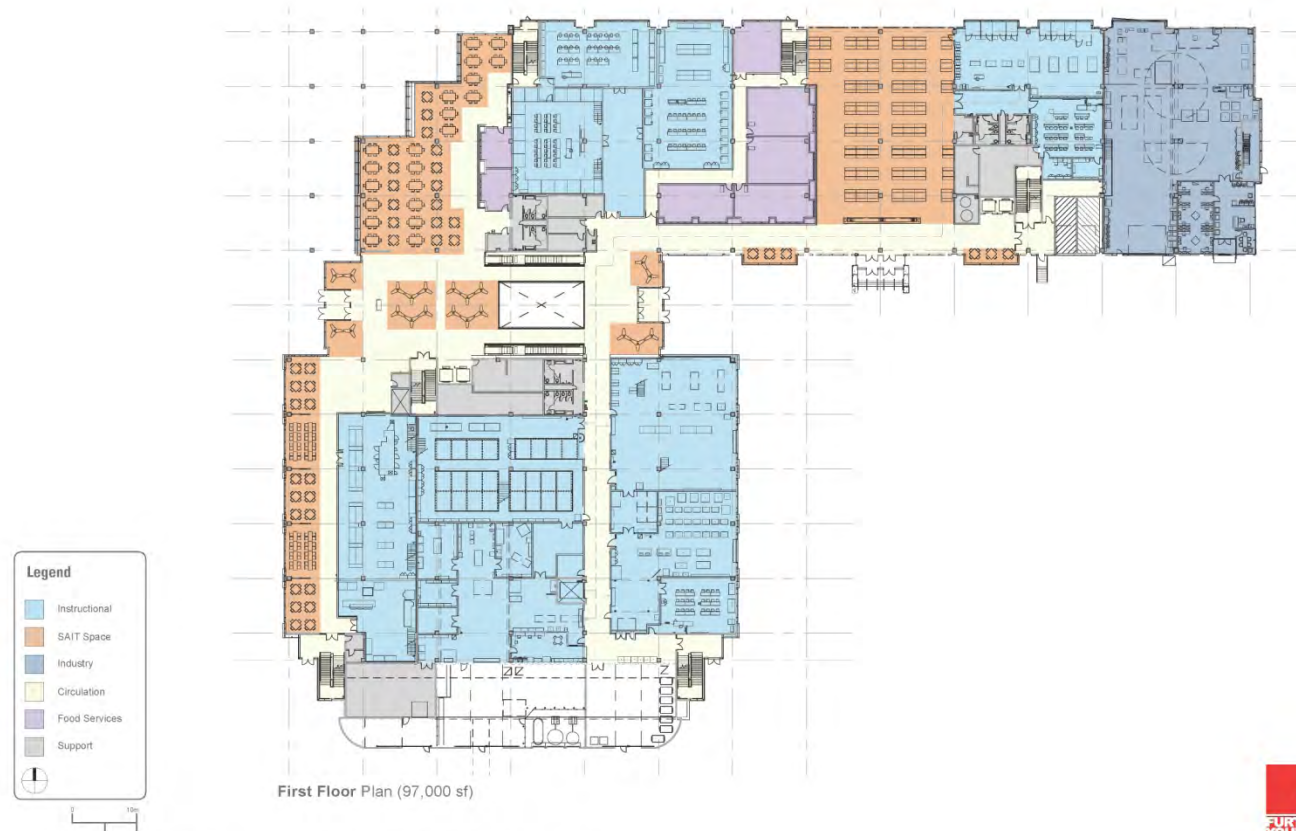




#### SAIT TRADES & TECHNOLOGY COMPLEX

- New Learning space for 8,100 apprenticeship and full-time students
- Increase of over 750,000 sf of formal and informal learning space
- 56 new classrooms; 94 new teaching laboratories and workshops
- 3 distinct wings
  - Aldred Centre (484,000 sf)
  - Johnson-Cobbe Centre (273,000 sf)
  - South Wing (7,000 sf)
- 3 Schools
  - School of Construction
  - School of Manufacturing & Automation
  - School of Energy
- LEED Silver accreditation
- Completed by September 2012

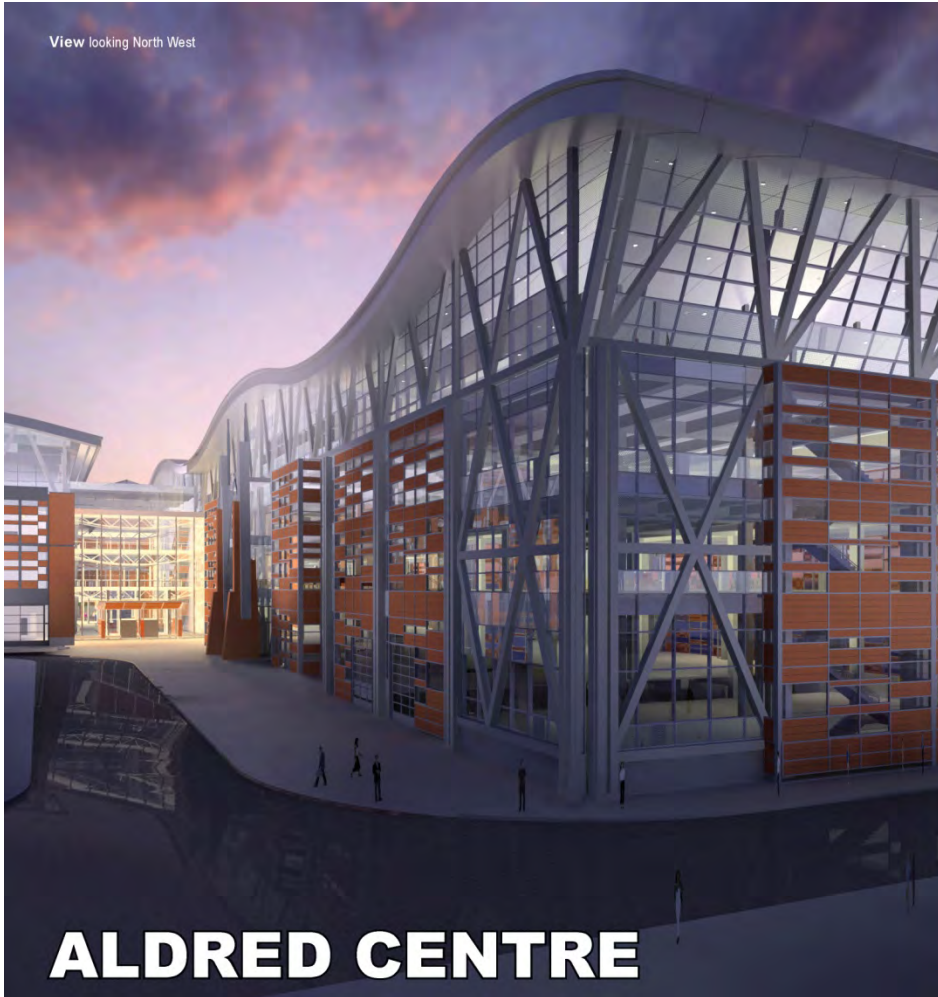
## TRADES & TECHNOLOGY COMPLEX



# ALDRED CENTRE



View looking North West



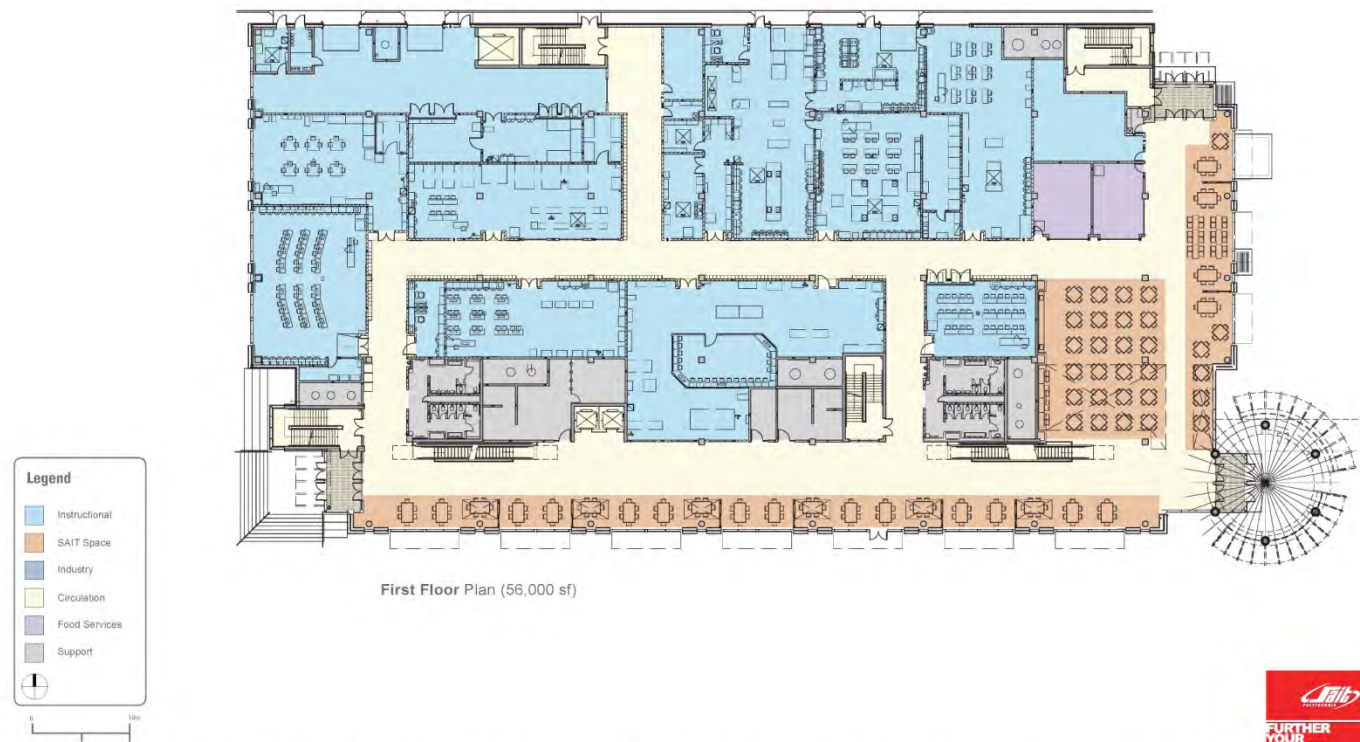
# ALDRED CENTRE

View looking South East



View looking North East





# JOHNSON-COBBE ENERGY CENTRE





# JOHNSON-COBBE ENERGY CENTRE



South Elevation



East Elevation

# JOHNSON-COBBE ENERGY CENTRE



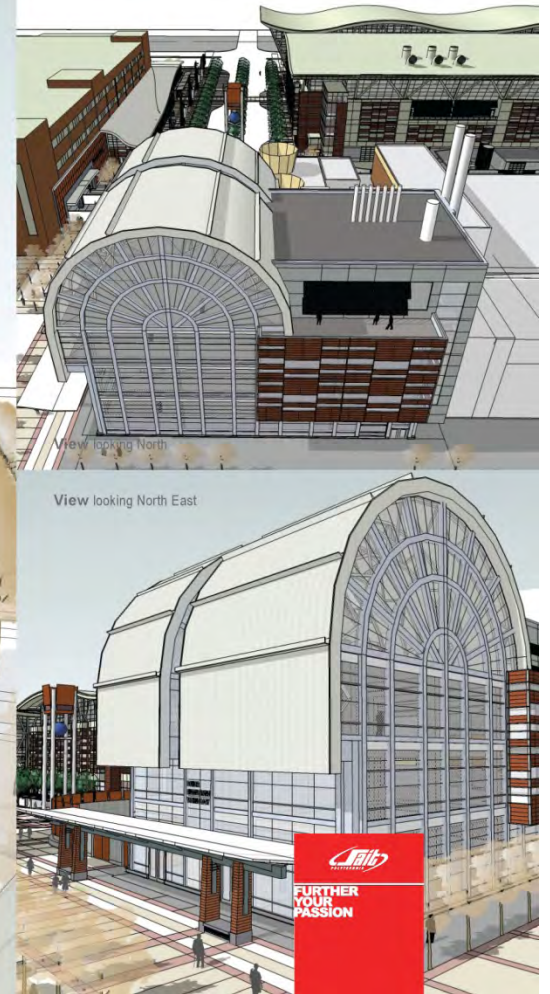


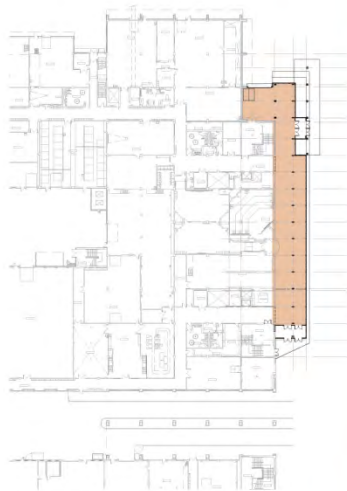
South West View looking North East from 14th Avenue Entrance

# JOHNSON-COBBE ENERGY CENTRE









# THOMAS RILEY ATRIUM





- [TTC Exterior 10-04-07.wmv](#)



































# August 2010



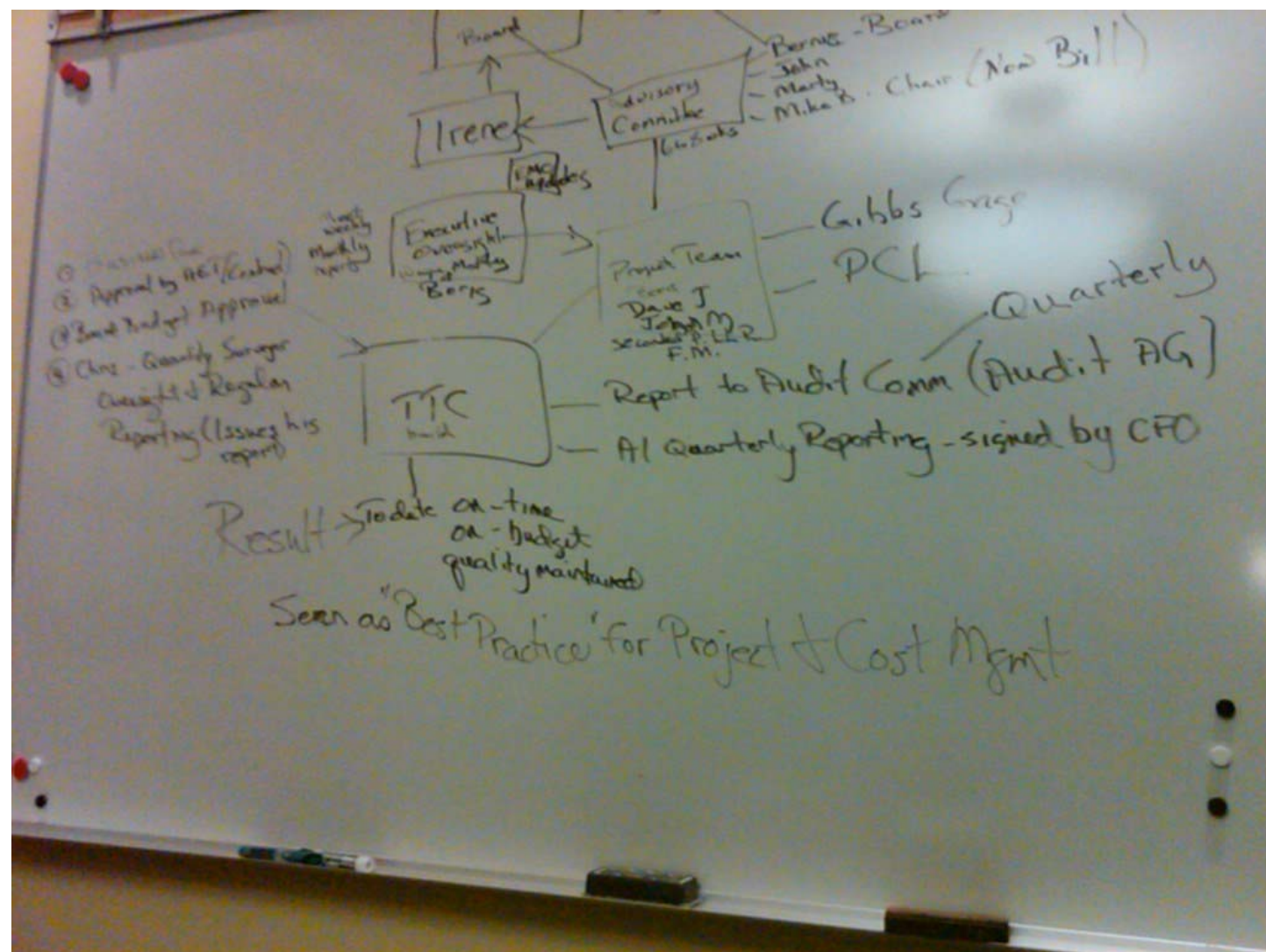


# August 2011









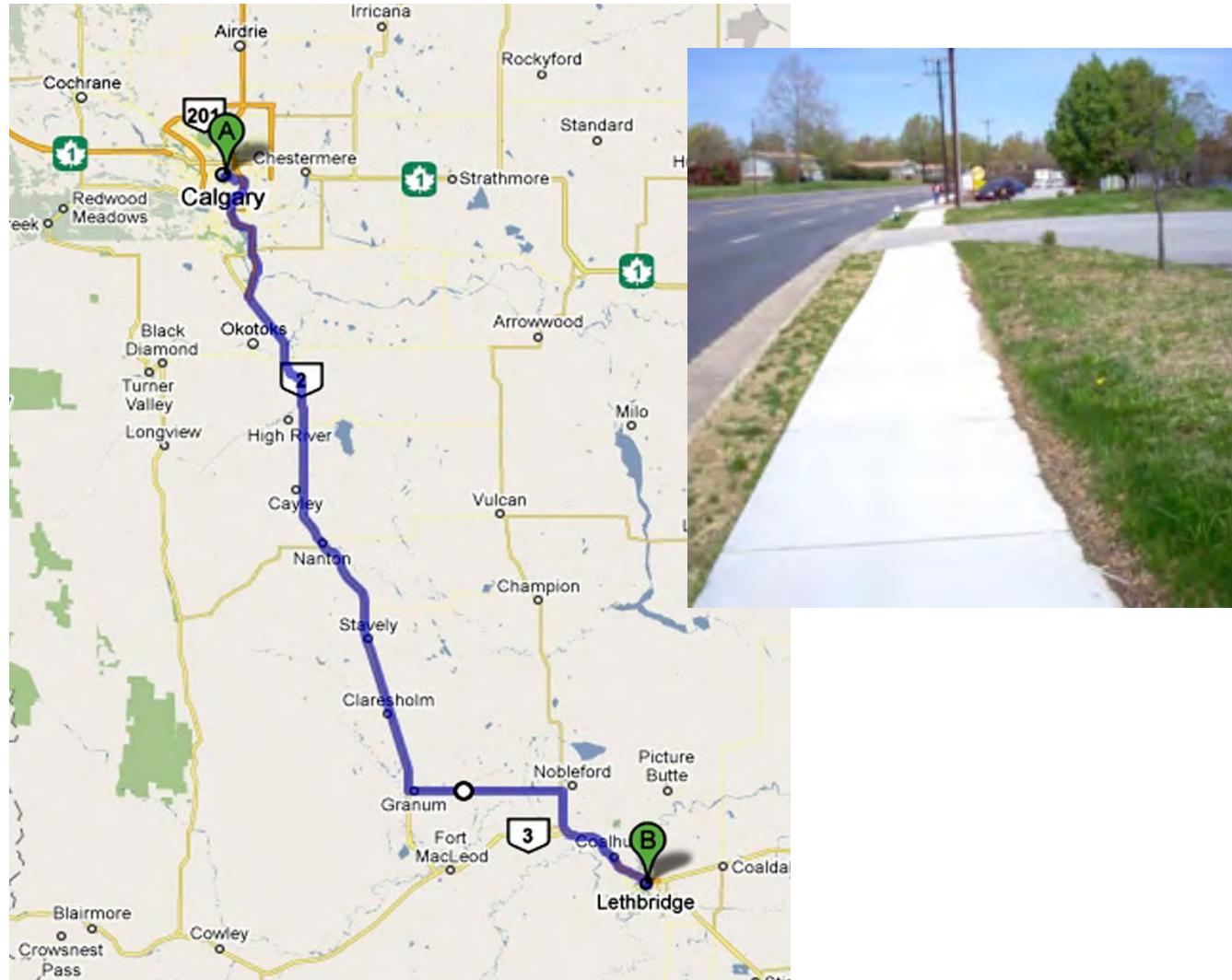




# Construction Material Trivia!

- Concrete
  - 29,917 m<sup>3</sup> (1,056,509 ft<sup>3</sup>)
- Rebar
  - 5,734,612 kg (12,642,655 lbs)

If you built a city sidewalk (5'-0" x 4") it would be 193 km (120 miles) long!





If you made it into a solid cube it would be 24' H x 27' W x 40' L

